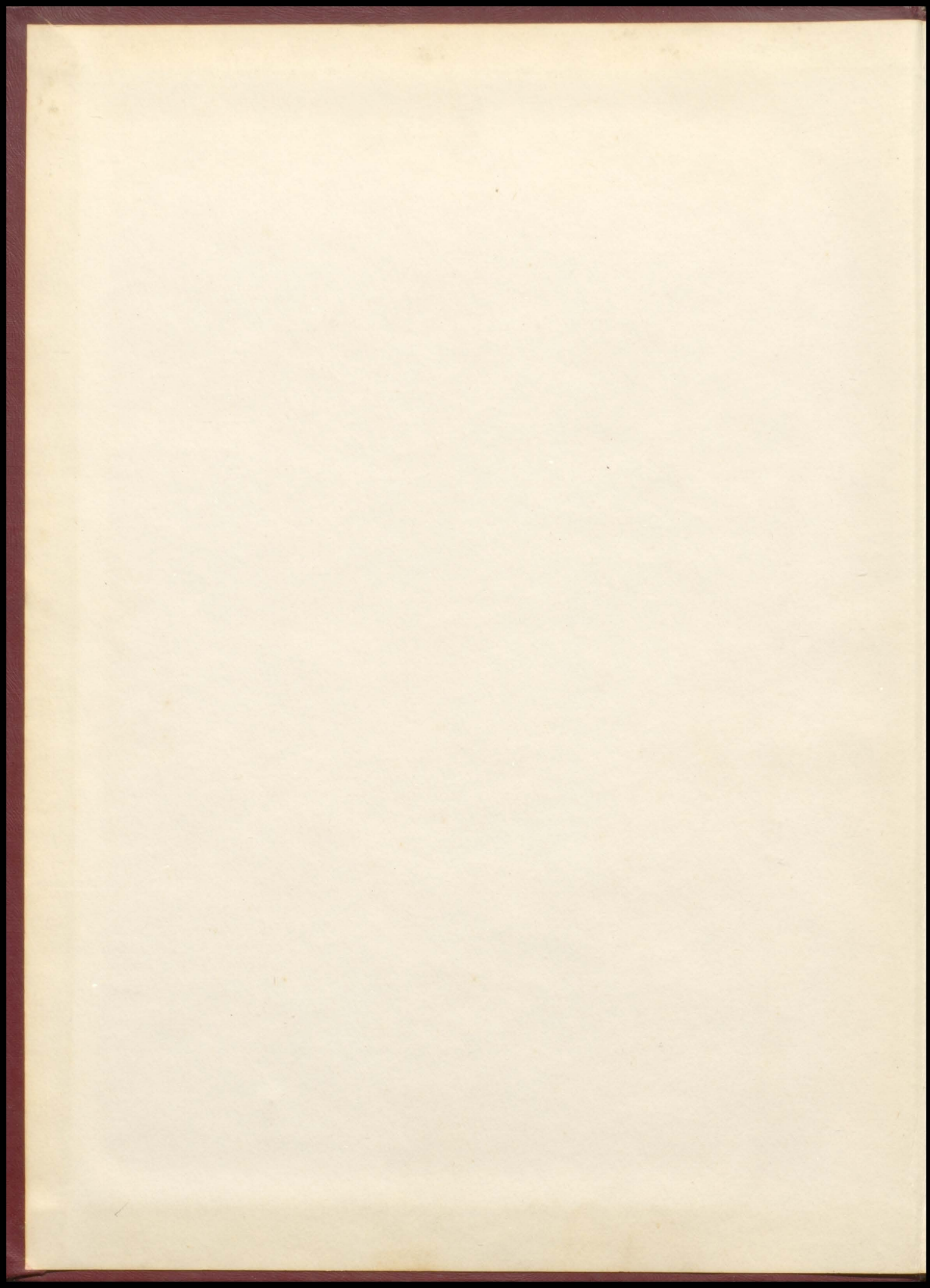
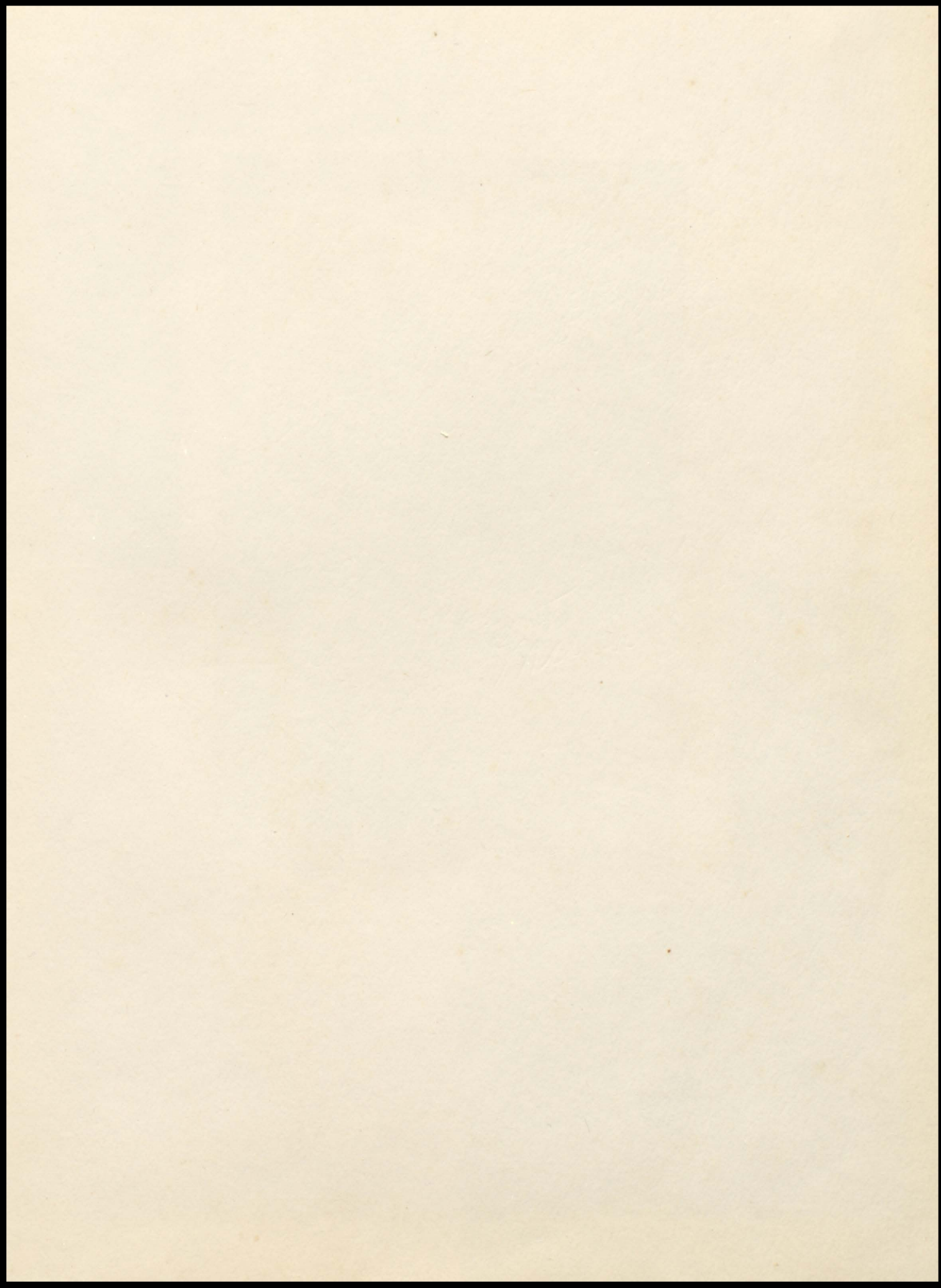
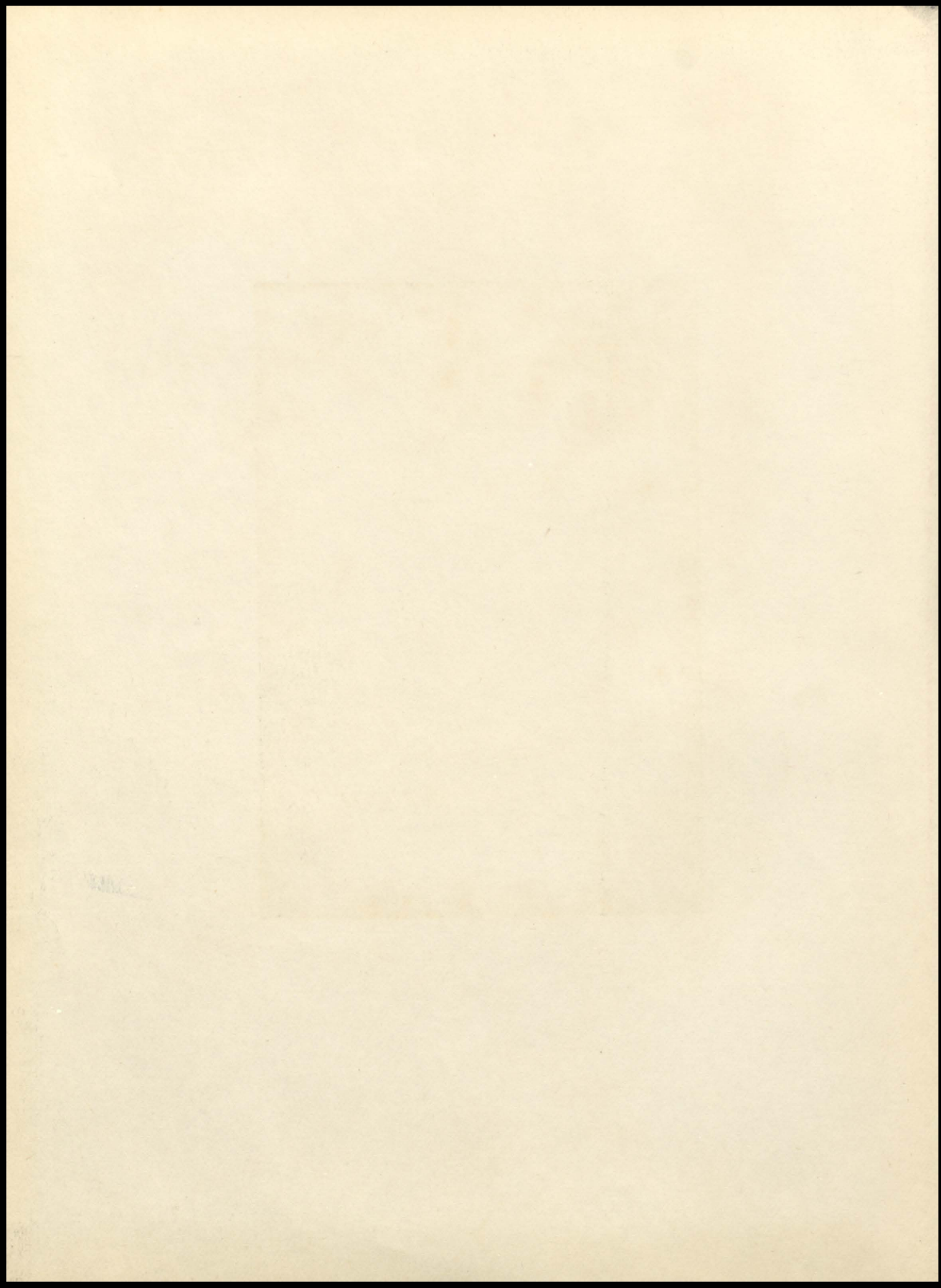


1960
BLACK SWAN







The
Best
Years



of
our
Lives

as presented in the nineteen



Annual Publication of Owen High

hundred and sixty



School, Swannanoa, North Carolina

Emilie Alexander - Editor
Lloyd Moore - Business Manager
Mrs. Mary Leinster - Sponsor
Mrs. Josephine McCoy - Sponsor

Foreword

To enclose between two covers what we mean when we say "OWEN HIGH SCHOOL", to put into a picture book the growth in learning and understanding the joys and disappointments of four high school years-- from such an attempt evolves your 1960 BLACK SWAN. Now we present it to you--part of your life, the best years.



Contents

ADMINISTRATION

CLASSES

ATHLETICS

ACTIVITIES

FEATURES



With
Deepest
Appreciation

T. W. Nesbitt

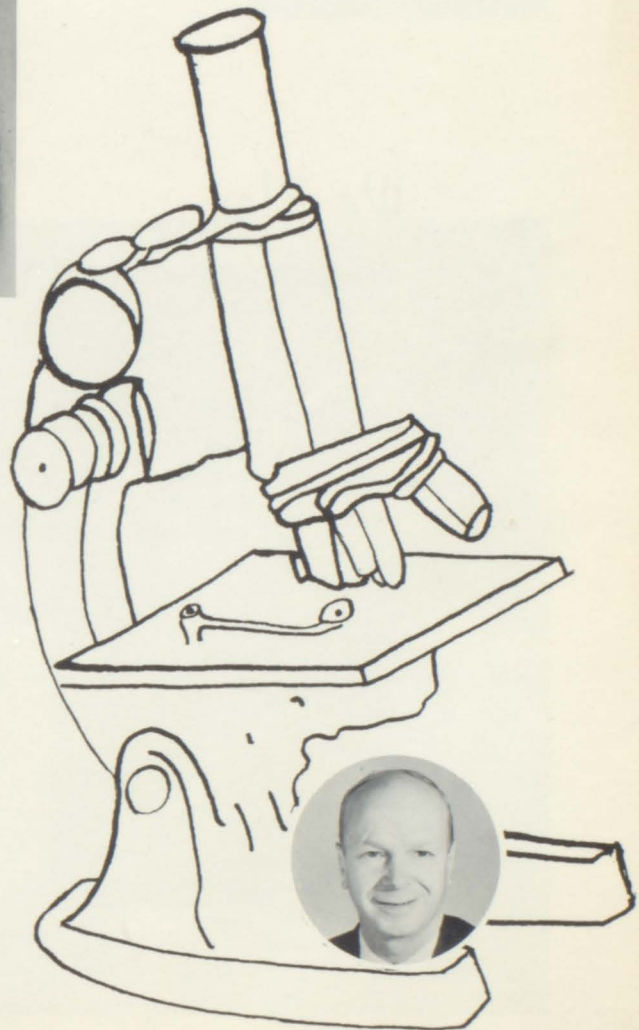
For the many years he has given to education...

For his quiet way of making the mysteries of science clearer...

For his love of the humorous...

For his kind understanding of the student...

We lovingly dedicate the 1960 Black Swan to Mr. Nesbitt, our teacher and friend.



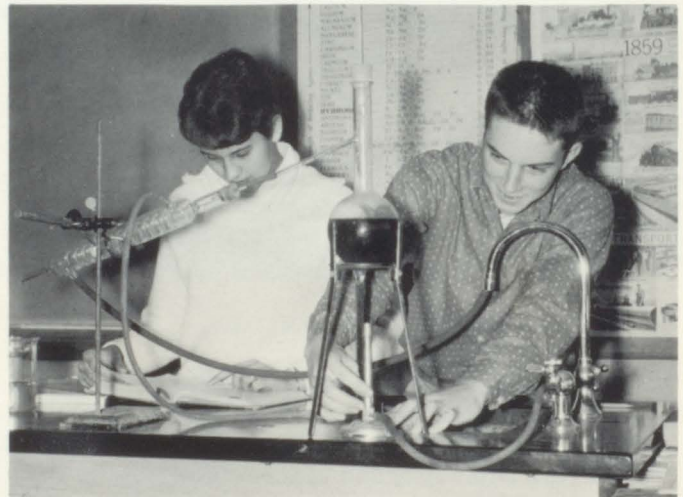
Carefree And Thoughtful....

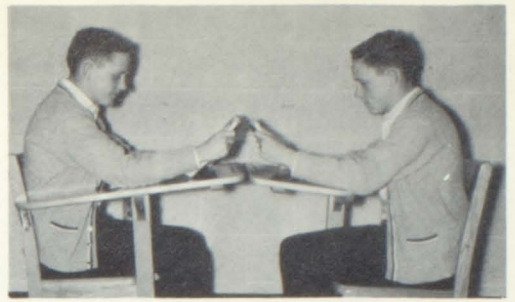


We Play...



We Work...





Through
Four
Years...



To Learn...



The Meaning of our Alma Mater



Administration





N. C. Shuford
Principal Emeritus

"RING OUT THE OLD"
. . . with gratitude and
appreciation



Fred H. Martin
Principal

"RING IN THE NEW"
. . . with hope and
anticipation



SCHOOL COMMITTEE

W. W. White, Chmn., R. W. Alexander, H. M. Noblitt, G. H. Greenwood,
C. L. McMahan, W. B. Beddingfield.



Mrs. Elizabeth Brewster
A. B. Mathematics

Clifford Brookshire
B. S. Biology, Phys. Ed.

Eugene Byrd
B. S. Social Studies



Mrs. Margaret Carr
A. B. Library, French, Latin

Gary Carson
B. S. Agriculture

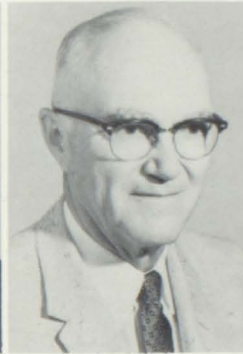
Elizabeth Cole
A. B., M. A. Latin

The Faculty...They Hold The Key ...

Arthur Ditt
A. B., M.A. Health, Safety, Phys. Ed.

Ray Findley
A. B. Mathematics

Mrs. Mary Freeman
A. B. French, English



Thomas Hansen
B. S. Business Administration

Mrs. Mary Leinster
A. B. Business Education

Mrs. Josephine McCoy
B. S. Mathematics



Mrs. Jewel D. McDaniel
B. S. Secretarial Administration

Mrs. Mavis Nesbitt
B. S. Home Economics

Thomas W. Nesbitt
A. B. Chemistry





Selmar Neskaug
B. S., M. S. Agriculture

Mrs. Joyce Parris
A. B. English

Mrs. Martha Perley *Best wishes to you Tommy*
A. B. English
Martha J. Perley



Elbert J. Pratt
B. S., M. S. Mathematics, History

Vera Price
B. S. Home Economics

Woodfin C. Rhodes
B. S., M. A. Chorus-Band

To Our Future *Best wishes Robert F. Sluder*

Ralph Singleton
B. S. Science, Phys. Ed.

Robert Sluder
B. S., M. A. Science

Charles F. Smith
B. A. E., M. Ed. English



Mrs. Garlene Stutts
A. B. English

Mrs. Delight Weeman
A. B., M. A. Guidance, Commercial

Ruth White
B. S. Biology, Phys. Ed.



Mrs. Hazel Wilson
B. S. Science

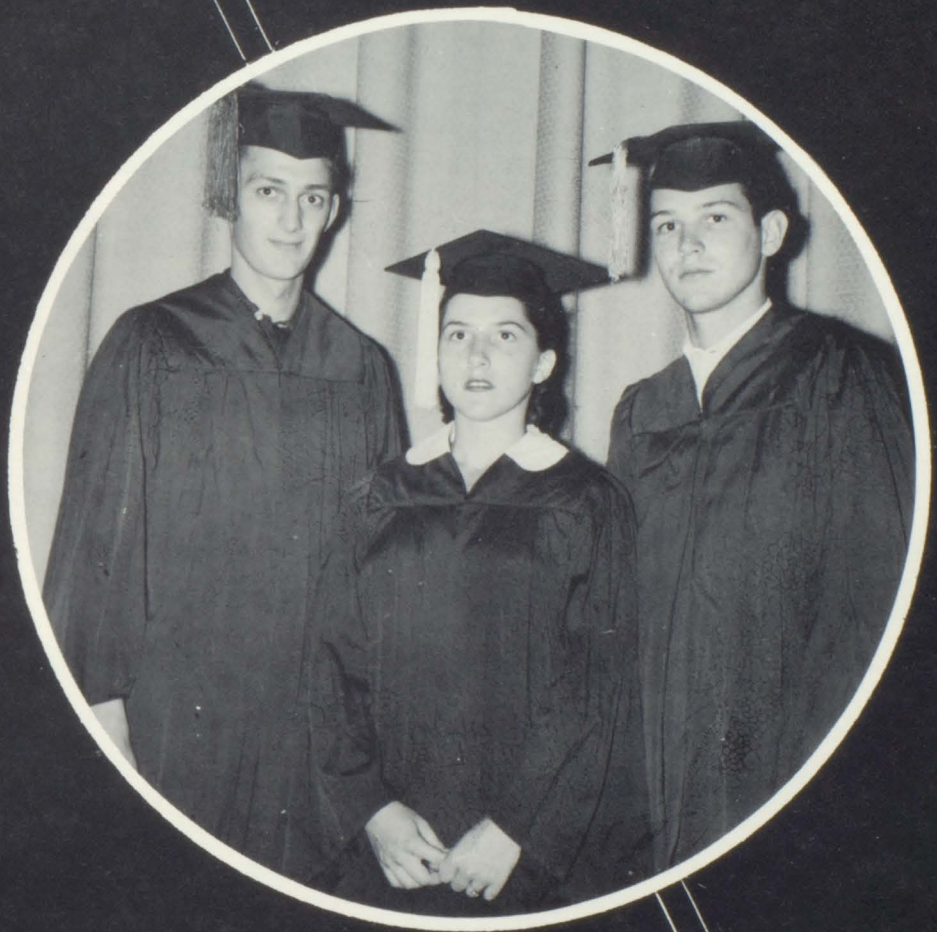
Nancy Wrenn
A. B. History, Phys. Ed.

Not Pictured
Mrs. Louise Miller
B. S. S. A. Administrative Asst.



Best wishes? Garlene Stutts

Classes



Seniors



DOUGLAS OWENBY..... President
 PEGGY McELRATH.....Vice President
 BRUCE EDWARDS..... Secretary
 GAIL HALLTreasurer

BEULA ADKINS
 F.H.A., 1,2,3,4; Beta Club
 3,4; Latin Club 2,3; Student
 Council 2, 4; May Court,
 Maid-of-Honor 3.

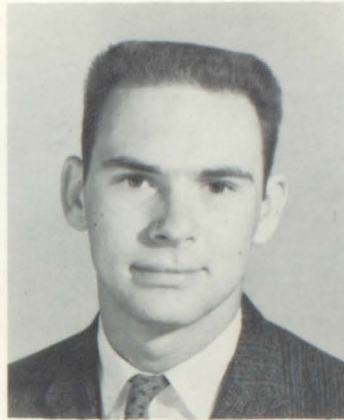
BOBBY ALLEN
 Jr. Deputies 1,2,3.

SHIRLEY ALLEN
 Bible Club 3.



BILL ALEXANDER

Student Council 2,3; Music Club 2,3,4; Bible Club 3; French Club 3,4; Hi-Y 4; Football 2, 3,4; Track 1,2; Baseball 1; Homecoming Escort 3; Band 1,2,3,4.



EMILIE ALEXANDER

Student Council 3, Beta Club 2,3,4; Latin Club 2, secretary 3; F.H.A. 1; Annual Staff-Assistant Editor 3, Editor 4; Music Club 1, Reporter 2,4; Class Treasurer 3; Representative to Girl's State 3; Representative to Southern Safety Conference 3; Chorus 1,2; Marshal 3.



DONNIE BALLARD

President of Freshman Class; F.F.A. 2,3,4; Bible Club 3; Music Club 3,4; Hi-Y, Treasurer 4; J. V. Basketball 1,2; J. V. Football Captain 1; Varsity 2,3,4.

LARRY BANKS

F.F.A. 1,2,3,4; Junior Deputy 1.



ROY BLANKENSHIP

F.F.A. 1,2,3,4; Square Dance Team 3,4; Bible Club 3; Chorus 4; Hi-Y 4.

JOYCE BOWLING

Chorus.



PRISCILLA BRADFORD

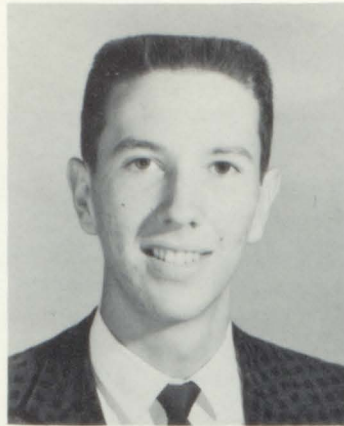
F. H. A. 2,3.

JOAN BROOKS

Seniors

ROBERT BROWN

Latin Club 3,4; Beta Club 2,3, President 4; Music Club 1,2,3,4 President; F.T.A. 4; Student Council 1,2,3, Treasurer 2; Jr. Deputies 1,2; Jr. Marshal; Annual Staff 4; Vice-President Junior Class.



BARBARA BURKE

F.H.A. 1,2,3, Parliamentarian 4; Bible Club 2,3; Latin Club 2,3; Student Council 1; Basketball 1,2, Captain 3,4; Track 1,2; Home Room Reporter 3.

JERLINE BURLESON

Bible Club 3.

JUDY BYRD

F.H.A. 1,2,3,4; Latin Club Active Member 1,2, Honorary Member 3,4; F.T.A. 3,4 Vice President 4; Chief-Junior Marshal 3; Salesmanship Award 3; D.A.R. Good Citizen Representative 4; Newspaper Society Editor 4; Chorus 4; Beta Club 2,3,4.

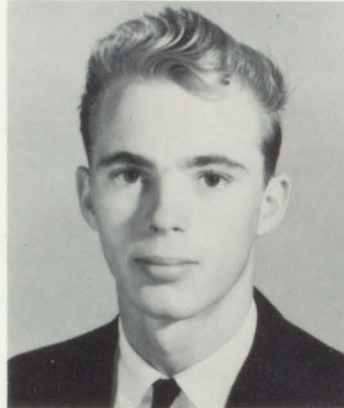


ROBERT BYRD

F.F.A. 1; Hi-Y; Bible Club; Football 1,2; Track 1,2,3,4; Junior Deputies 1,2; Foresters Club 1,2,3.

CLAUDE CAPPS

Glee Club 1; French Club 1,2; F.F.A. 1,2,3,4; Jr. Deputy 1,2; Music Club 1,2; 4-H Club 1,2; J. V. Football 1; Manager of Football 1.

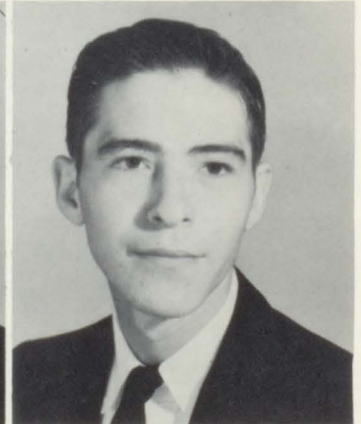


EARL CARVER

F.F.A. 2,3,4; Student Council 1; Bible Club 3; Junior Deputy 1; 4-H Club 1,2; Football 1(J. V.).

FREDDY CLARK

F.F.A. 1,2,3,4; Junior Deputy 1,2.





JACK CLARK
F.F.A. 1,2,3,4; Bible Club 2; Jr. Deputies 1.

DON COOKE
F.F.A. 1,2,3,4; Forestry Club 3; Bible Club 3;
J. V. Football 2.



LINDA CRAWFORD

LINDA CREASMAN
French Club 3; Chorus 3.



ARTHUR CUTSHALL
French Club 3,4.

JO ANN DEHART



DAVID DILLINGHAM
F.F.A. 1,2,3,4; 4-H 1,2; Jr. Deputy 1,2; Junior
Varsity Football 1; Bus Driver 4.

SHIRLEY EARLEY

Seniors



BRUCE EDWARDS
 Music Club 3,4; French Club 3,4; Bible Club 3; J. V. Football 1; Varsity Football 2,3,4; J. V. Basketball 1,2; Varsity Basketball 3,4; Baseball 2,3,4; Sec. of Senior Class, Captain of Football Team 4th year; Reporter of Bible Club.

WAYNE ELLIOT
 Track 2; Bus Driver 4.



LINDA FARR
 Glee Club 1,2,3,4; Newspaper Staff 3,4; Sodality 1,2,3,4; Latin Club 1,2,3,4; French Club 2,3,4; Baseball 1,2,3,4; Basketball 1,2,3,4; Soccer 1,2,3; Tennis 1,2,3; Science Fair 3,4; (transfer from St. Genevieve's in Senior year)

BOBBY FENDER
 F.F.A. 1,2,3,4; Bible Club 3; Bus Driver 2,3,4.



HELEN FIELDS
THOMAS FORTUNE
 F.F.A. 1,2,3,4; Bus Driver 3,4.



KATHY GAFFORD
 F.H.A. 1; Bible Club 3; Square Dance.

TED GILL
 F.F.A. 1,2,3,4; 4-H 1,2; Junior Deputy 1,2.

DALLAS GRAGG

Chorus 1,2,3, President 4; Square dance team 3,4; Bible Club 3; Hi-Y Club 4; Jr. Deputies 1,2,3; Octet 2,3,4.

DONNA GRAY

Home Economics 1; F.H.A. 2; F.T.A. 2; May Court 2



GAIL HALL

Music Club 3, Sec. Treas. 4; Student Council 2; F.H.A. 1; Class Treasurer 4; Basketball 1,2,3; Majorette 2,3, Head Majorette 4; May Court 2; Homecoming Court 1,3,4.

WILMA HALL

French Club 3, Secretary 4; F.H.A. 3; Bible Club 3; Class Secretary 3; Basketball Court 3.



CAROL HAMBY

Bible Club 3; Latin Club 3,4; Chorus 2,3.

TONY HAMPTON

Jr. Deputies 1,2,3; F.F.A. 1,2,3,4; Football 1,2,3, Captain 4; Track 1,2,3,4; Basketball 1,2.



VERNON HAMPTON

French Club 3,4; F.F.A. 2.

LEVITA HEMPHILL



Seniors

MARY HENDLEY

Beta Club 2,3; Bible Club 3; Annual Staff 4; Newspaper Staff 4; Marshal 3; Sadie Hawkins Queen 3; Representative to Family Life Conference 2.



RUTH ANN HOLT

F.H.A. 1; Bible Club President 3.

BILL HORNE

French Club 4; Music Club 4; Basketball 2,3, Captain 4; Baseball 2,3,4; Track 2,3,4; Bus Driver 3,4; Class President 3; Student Body President 4; Executive Council PTA 4.

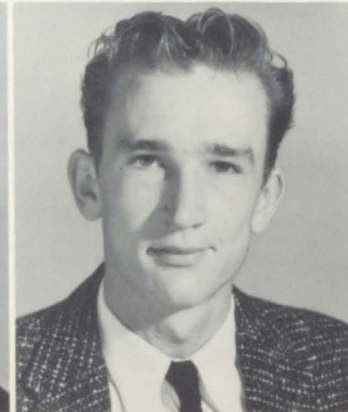


JOANN JENKINS

Bible Club 2,3.

DAPHNE JOLLY

Latin Club 3,4; F.H.A. 1,2, Historian 3,4; Bible Club 3; Basketball 1,2,3,4.



OSCAR JONES, JR.

F.F.A. 1,2,3,4; Chorus 3,4.

DANA KELLY

F.H.A. 1,2; Bible Club 2; French Club 3,4; F.T.A. 3, Treasurer 4.



MARCHETA KELLY



BARBARA KING

Bible Club 3.

MACK KIRKPATRICK

French Club 3; Music Club 3,4; Bible Club 3; Jr. Deputies 1,2; Bus Driver 4; May Court Escort 1; Escort in Football Court 3.



JANNELLE LEDBETTER

Beta Club 3,4; F.H.A. Club 1,2,3,4; Latin Club 3,4, Vice-President 4; Student Council 2,3, Vice-President 3; Class Treasurer 1; May Court Attendant 2,3; First place in Buncombe County Sportsmanship essay contest 2; Junior Marshal 3; Editor of school paper 4.

BETTE LINKSTON



RACHEL LOVELACE

Bible Club 1; F.H.A. 1; J-V Basketball 1.

JACK LUNSFORD

Music Club 3,4; F.F.A. 1,2,3,4; Basketball 1; Junior Deputies 1,2.

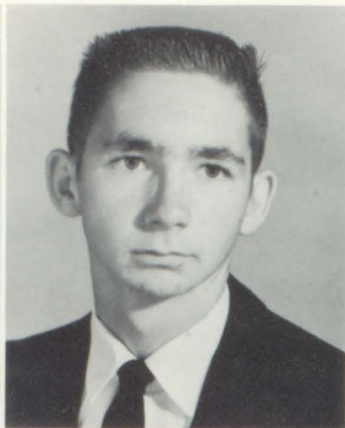


MARIAN LYDA

F.H.A. 1,2,4; Bible Club 3; 4-H Club 1; J-V Basketball 1; J-V Cheerleader 1; Square Dance Team 3,4.

JULIAN MARRETT

Seniors



ELAINE MARTIN
F.H.A. 1,2,3; Bible Club 2,3; Basketball 2;
Basketball Manager 3; Track 1,2.

DAVID McCUEN
F.F.A. 1; French Club 3,4; Junior Deputies
1,2,3,4; Basketball 3,4.



CARSON McDANIEL
French Club 3,4; Track 2,3,4.

PAT McDARIS
Bible Club 2,3.



KENNETH McELRATH
Football 3,4; Baseball 3,4; Track 3,4.

PEGGY McELRATH
French Club 3,4; F.H.A. 1,2,3, Historian 4;
Junior Bible Club Secretary; Secretary of
Freshman Class; Vice-President of Senior
Class; Student Council 2; Music Club 3,4;
Cheerleader 3,4; Homecoming Court 3; Home-
coming Queen 4.



PATTY McGRATH
Bible Club 3.

ARMILDA MCKINNEY
Bible Club 3; 4-H Club 1,3; Y-Teens 2; Square
Dance Team 3.

LEWIS McMAHAN
F.F.A. 1; Bible Club 3.



MARGARET MELTON
Bible Club 2,3; Octette 4; Music Club 4.

CHARLENE MEYER
French Club 3,4; F.T.A. 3,4; County Representative of FTA Project Committee 4; Music Club 3,4; Chorus 2,3.



GARLAND MILLER
F.F.A. 1,2,3,4; Bus Driver..

LLOYD MOORE
Bible Club 3; French Club 3,4; Music Club 4; Future Teachers Club 3,4; Representative to Student Council 4; President of Buncombe County Future Teachers of America 4; Junior Deputies 1,2; Track 1; Annual Staff, Business Manager, 4; Boys' State Representative 3; Square Dance Team 3,4.



SHIRLEY MOORE
Latin Club 2; French Club 3,4; Beta Club 2,3,4; F.T.A. 3, Historian 4; Bible Club 2,3; Chief Marshal 3; Second place History Award 3.

KEN MORGAN
French Club 3,4; Music Club 1,2,3,4; Bible Club 3; F.T.A. 3,4; Student Council 2; Hi-Y 4; May Court escort 1,3; Football Court escort 2; Octette 1,2.



BARBARA MORRIS
Beta Club 2,3,4; Bible Club 3; F.H.A. 3; Marshal 3; U. S. History Award 3; Newspaper Staff 4.

Seniors

RONALD MORRIS

French Club 3,4; Football 2; Junior Deputies 1,2.

CHARLES MUMPOWER

F.F.A. 1,2; Junior Deputies 2; 4-H Club 2; J-V Football Manager 1.



GERALD MUNDY

Junior Deputy 1,2,3; French Club 3,4.

JAMES MURPHY

F.F.A. 1,2; Junior Deputy 1,2,3.



MYRA NANNEY

F.H.A. Club 1,2,3,4; Beta Club 2,3,4; F.T.A. 4; Latin Club 3,4; Music Club 3,4; Marshal 3; Annual Staff Club Editor 4; Newspaper Staff, Business Manager 4.

ELOISE NOAH

Band 1, Section leader, librarian 2, co-student director 3,4; F.T.A. 3, Reporter 4; Music Club 3; French Club 3,4; Bible Club 3; Representative to Greater Asheville Intergroup Youth Congress 1,2,3,4.



CHARLES NORMAN

F.F.A. 1,2,3,4; J-V Football 1,2; Junior Deputy 1,2; Bus Driver 4.

LUCILLE ORR

4-H Club 1,2,3.





DOUGLAS OWENBY
 Student Council 2,3; Latin Club 3, Treasurer 4; Beta Club 2,3, Vice-President 4; F.T.A. 4; Civitan Citizenship Award 1,3; Class president 4; May Court Escort 2; Bus Driver 4.

ANDREW PARKER
 F.F.A. 1,2,3,4; Junior Deputy 1.



MARGARET PARTON
 Chorus 1; F.H.A. 1; Track 1,2,3; Newspaper Reporter 4.

JUNE PATE
 4-H Club 3; F.H.A. 1,2,3,4; Bible Club 2,3; Y-Teens 3; J-V Basketball 1.



PATRICIA PATTON
 F.H.A. 1; Bible Club 3.

MECK PENLEY
 Bible Club 1; Football 1; J-V Basketball 1,2.



PAT PETERSON
 French Club 3,4; Football 2; Baseball 3,4; Track 3,4.

BETTY POLLARD
 F.T.A. 3, President 4; Beta Club 2,3,4; F.H.A. 1,2,3,4; Music Club 4; Bible Club 3; Marshal 3; Newspaper Staff, Asst. Editor 4.

Seniors

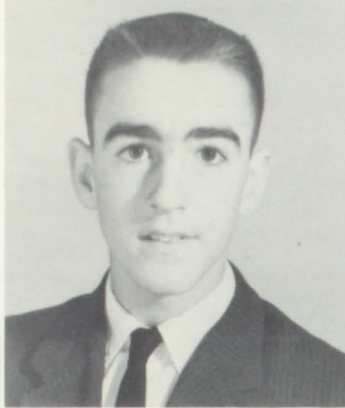
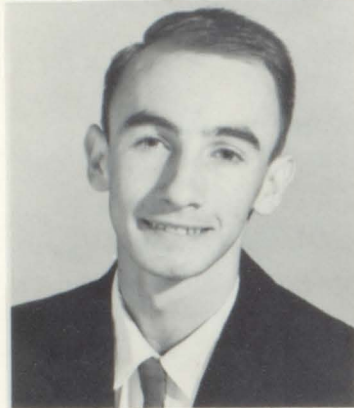


DOLORES POPE

Bible Club 3.

ALICE PRESSLEY

F.H.A. 1,2; Latin Club 3,4; Bible Club 3.



DANNIE PRESSLEY

F.F.A. 1,2,3,4; Jr. Deputy 1,2.

CARL PULLIUM

F.F.A. 1,2,3,4; Jr. Deputy 1,2; 4-H Club 1,2;
J. V. Football 1,2.



MADELYN RADFORD

Bible Club 3; F.H.A. 2.

JO RAYBURN

F.H.A. 1; Bible Club 2,3.



DOROTHY REDMON

F.H.A. 1,2,3,4; Latin Club 4; Music Club 4;
Bible Club 2,3.

BARBARA REED

Bible Club 2,3.

J. D. ROBERTS

F.F.A. 1,2,3,4; Bible Club 3; Football 1,2,3,4; Track.

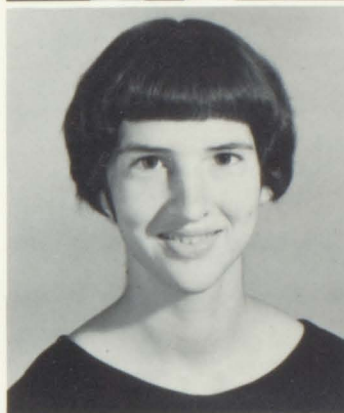


JIMMY ROBERTSON

F.F.A. 1,2,3,4; Forestry Club 3,4; Jr. Deputy 1,2.

OLEETA ROBINSON

4-H Club 1; Bible Club 3.



BARRY SEHION

Bible Club 3; Jr. Deputy 1; J. V. Basketball 1; J. V. Football 1.

JUDY SHIRLEN

F.H.A. 1,2, Secretary 3,4; Beta Club 2,3,4; French Club Vice President 3, President 4; F.T.A. 3,4; Bible Club 2,3; Basketball 1,2,3, Captain 4; Track 1,2,3,4; Basketball Court 3; Good Citizen 3; Sports Editor of Newspaper 4; Marshal 3.



RITA SHOOK

F.H.A. 1,2,3; Bible Club 3; Basketball 2,3,4; Track 2; Basketball Court 3.

MARGARET SHORE

F.H.A. 1,3,4; Bible Club 3.



RICHARD SIMMONS

F.F.A. 1,2,3,4; Bus Driver 1,2.



Seniors

LORRAINE SLAGLE

F.T.A. 1,2; Bible Club 2, secretary 3; Track 3.

ROBERT SLAGLE

F.F.A. 1,2,3; Bible Club 3; Jr. Deputy 1,2.



DOUGLAS SMITH

Bible Club 1,2,3; Music Club 3,4; J.V. Football 1,2; J. V. Basketball 1,2; Square Dance Team 3,4.

SHERRY SMITH

Bible Club 3; F.T.A. 4; Basketball 1,2; Marshal 3.



TOMMY SOBOL

French Club 3,4; Forestry Club Secretary 3; Jr. Deputy 1,2; J.V. Basketball 1; Intramural Basketball 1,2,3; May Court Escort 3.

TIM SPIRO

Latin Club 1,2; Beta Club 3,4; F.T.A. 4; French Club 4; Bible Club 1,3; Basketball 3,4; Track 1,3; Annual Staff Sports Editor 4; Newspaper Staff 4; Band 1,2; "What's Goin' at Owen" 4; All State Band 2,3,4; Delegate to Junior Science Symposium 3; Marshal 3.



WANDA SPIVEY

F.H.A. 1; Glee Club 1; 4-H Club 1; Bible Club 3.

MARY STOCKTON

Latin Club 1,2; Bible Club 2,3; Beta Club 2,3,4; F.T.A. 3,4; French Club 3, Treasurer 4; Marshal 3; Newspaper Staff Art Editor 3,4.





BETH SUMMEY
French Club 2; F.H.A. 3; F.T.A. 2.

TONI TAYLOR
Latin Club 2,3; French Club 4; Bible Club 3;
F.T.A. 3,4; Beta Club 2,3,4; Band 1; Represent-
ative to Girls' State 3; Newspaper Staff
4; Marshal 3.



MARIE THOMAS
F.H.A. 2, Reporter 3; F.T.A. 1,2, Sec-Treas.
3; Journalism Club 3.

SUSAN THOMAS
F.T.A. 1,3,4; Latin Club 3,4; Music Club 3,4;
Chorus 1,2,4; Octette 4; Homecoming Court
3; Salesmanship Award 3.



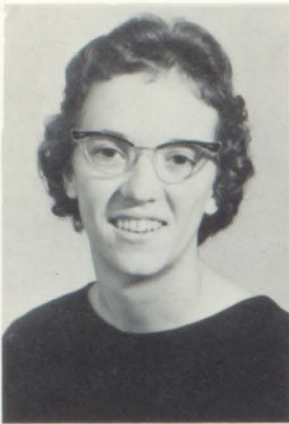
JERRY TOMLINSON
Music Club Treasurer 3,4; F.F.A. 2; French
Club 3; Jr. Deputy 3; Football Manager 2,3,4;
Baseball Manager 1; Track Team 2.

JO TOMLINSON
Student Council 1,3; Beta Club 3,4; Bible Club
2,3; Newspaper Staff 4; Music Club 4; Basket-
ball 2; May Court 1.



REGINA TROUTMAN
Square Dance Team 4.

IRIS VESS
Bible Club 2,3; Marshal 3.



WANDA VESS

Bible Club 3.

DORIS WATKINS

Bible Club 2,3.



ALMA WATSON

Student Council 1; F.T.A. County Secretary 4; F.H.A. 1,2,3,4; French Club 3,4; Beta Club 2, Vice President 3,4; Music Club 3,4; Newspaper Staff 3, Business Manager 4; May Court 3.

LUKE WOOD

F.F.A. 1,2; Latin Club 3,4; Baseball 2,3,4; J.V. Basketball 2,3,4; J. V. Football 1,2; Jr. Deputy 1,2; 4-H Club 1.



MARVIN WRIGHT

F.F.A. 1,2; Jr. Deputy 1,2.

JOAN BARNWELL

NOT PICTURED:
BILL DAUGHERTY
CARL RIDGE

Junior Class



CLASS OFFICERS

Stanley Brown, President Eddie Smith, Vice President
Judi Raines, Secretary Bobby Peterson, Treasurer

Charles Aiken

Carolyn Allen

Jimmy Allen

Linda Allen



Junior Class



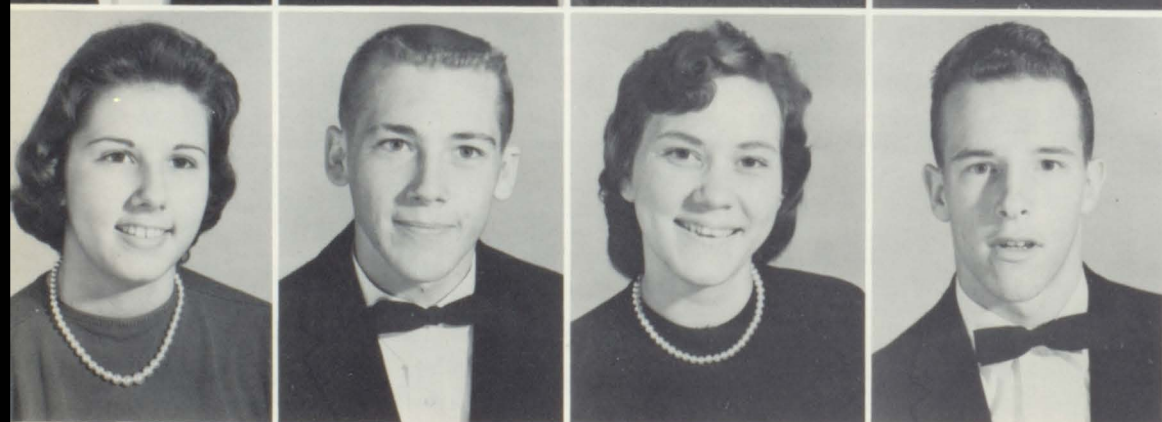
Phyllis Alley
Marie Allison
Glenda Andrews
Dolores Artuso



Patrica Ball
Johnny Ballew
Harrell Banks
Peggy Banks



Ronald Bartlett
Donna Bass
Ann Beddingfield
Yvonne Belanger



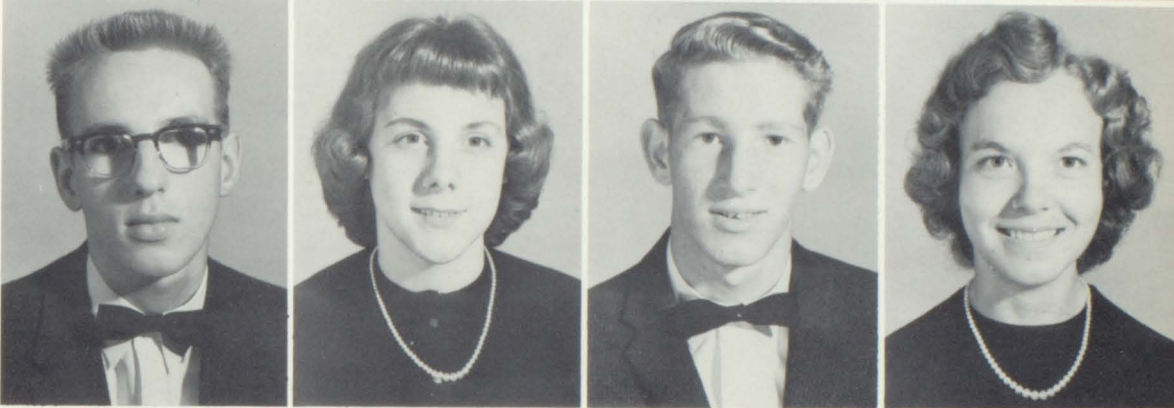
Beverly Bird
Charles Blaine
Brenda Bridges
Tommy Bright

Junior Class

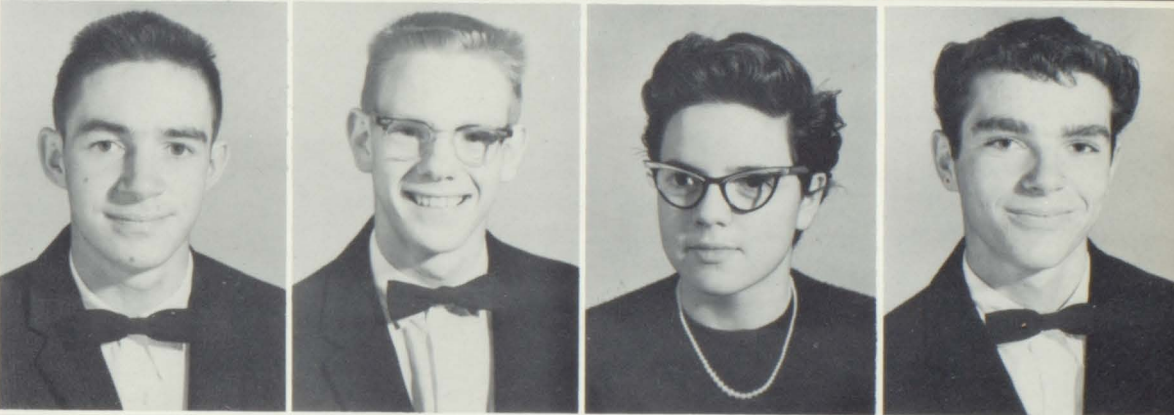
Stanley Brown
Beverly Bryan
Carolyn Bryant
Clifford Buckner



David Buckner
Doris Buckner
Johnny Buckner
Janice Burch



Fred Burgin
Malcombe Burnett
Joyce Byrd
Melvin Carpenter



Kathy Carroll
LeRoy Carson
Ronald Carson
Randy Champion



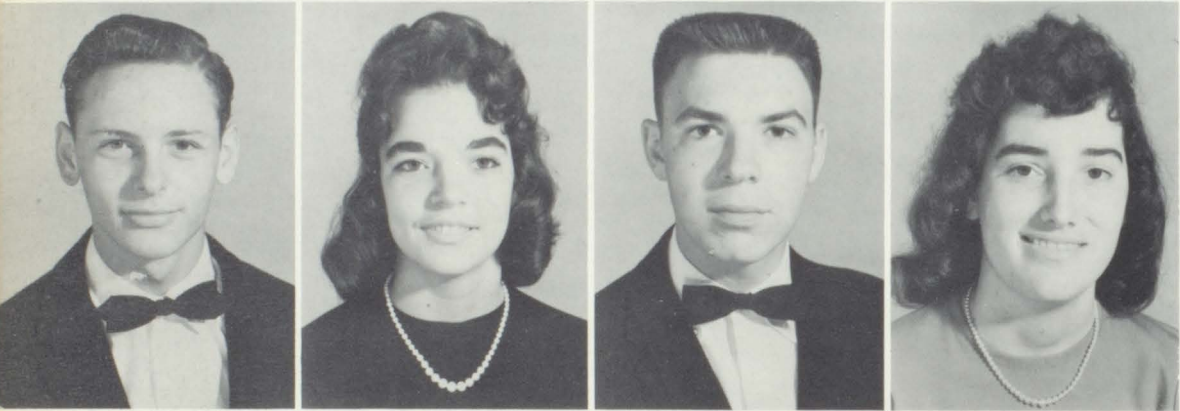
Junior Class



Bruce Clapp
Lee Clapp
Carolyn Clevenger
Jerry Cline



Linda Conner
Bill Connet
Sandy Cook
Jo Ann Cooper



David Craig
Judy Crowe
John Crump
Dorothy Davis



Wayne Dickens
Ronald Dillingham
Carolyn Dotson
Harold Fender

Junior Class

Martha Ferguson
Betty Fortune
Brenda Garland
Elaine Garris



Harry Gibbs
Doris Gibson
Larry Gill
Ray Glass



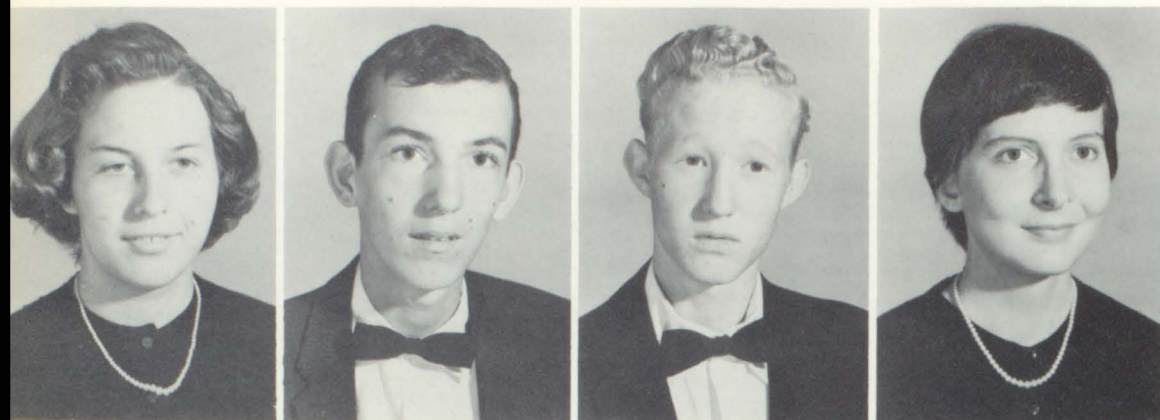
Patsy Goodman
Leon Gregory
Marie Halford
David Hall



James Hall
Loretta Hall
Mary Ham
Bud Haney



Junior Class



Katherine Harris
Walter Harris
James Henderson
Janice Higginbotham



Jerry Hogan
Barbara Hollifield
Charlotte Hudgins
Jackie Hughes



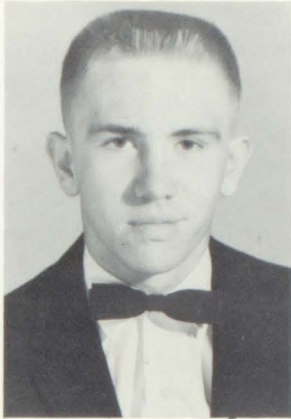
Jackie Huscusson
Richard Israel
Linda Jones
Margaret Ledbetter



Neil Ledbetter
Sharon Ledford
Patsy Lee
Joan Lemieux

Junior Class

Howard Lewis
Brenda Lindsay
Brenda Linens
Bill Link



Bobby Lowe
Vance Lunsford
Wanda Lunsford
Douglas Mahaffey



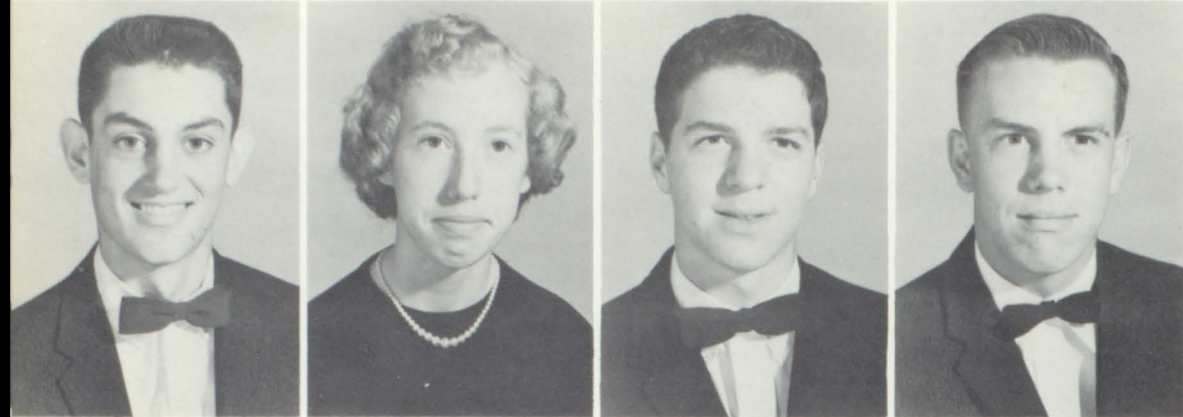
Judy Marett
Margaret Mashburn
Padhee Massey
John McCurry



Nancy McDaris
Mary Ann McKnight
Ronald McMahan
Betty McPeters



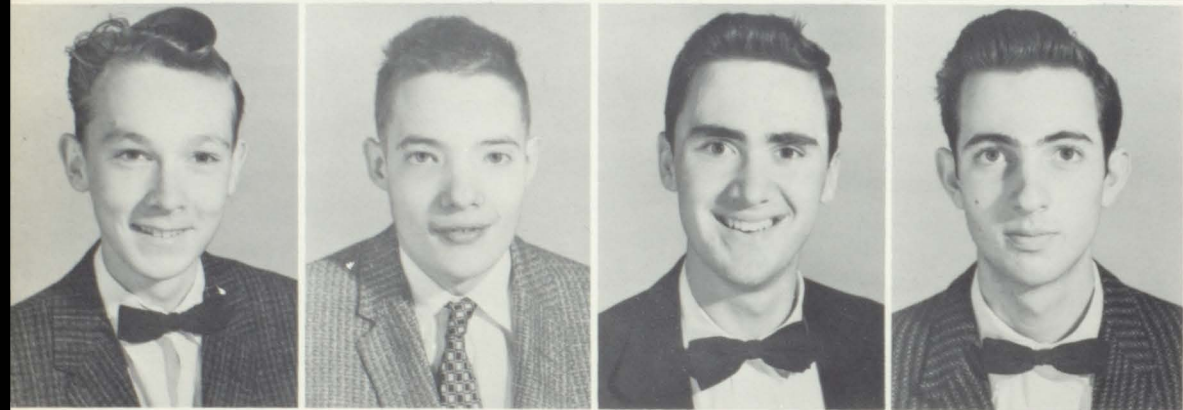
Junior Class



Don Metcalf
Pauline Miller
Leonard Moore
Sam Morris



Jerry Morrow
Catherine Moyers
Carl Nanney
Nellie Nelon



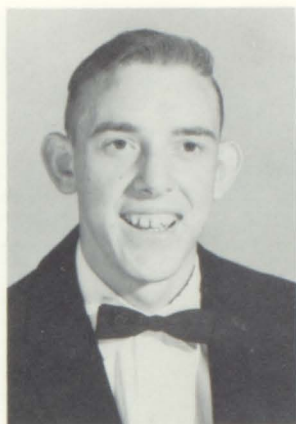
Marvin Nesbitt
Tommy Nesbitt
Jim Nevins
Jimmy Nichols



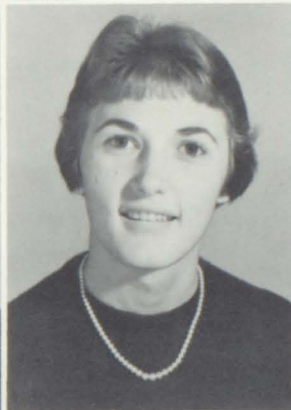
Mary Ruth Nix
Emogene Norman
Louise Norton
Steve Olivera

Junior Class

Charles Owenby
 Danny Owenby
 Thomas Owensby
 Ernest Payne



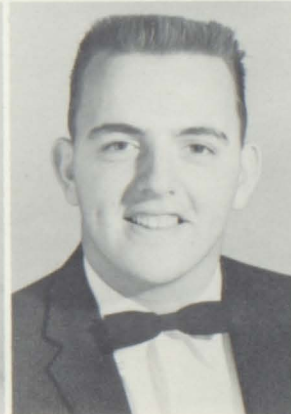
Helen Pegg
 Sue Penley
 Bob Peterson
 Barbara Pound



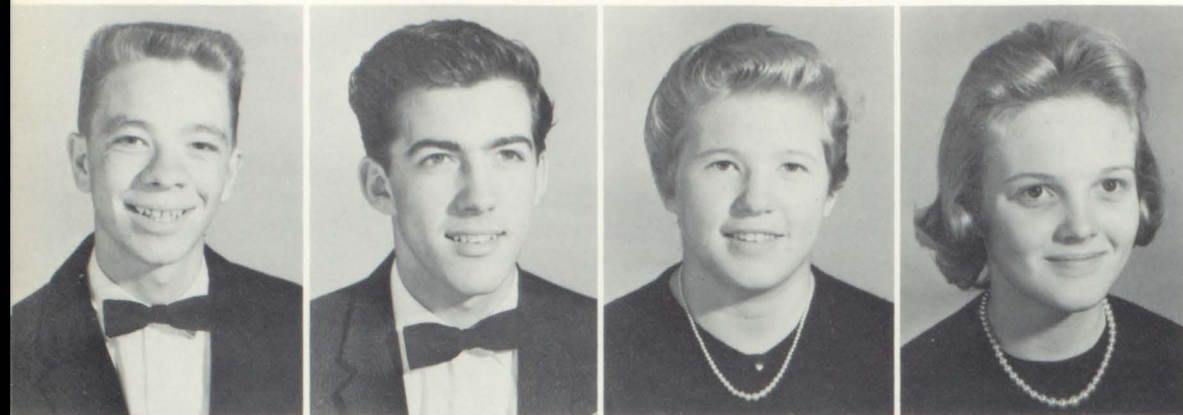
Shirley Pound
 Ronald Price
 Rita Putnam
 Judy Raines



Martha Raines
 Nora Rankin
 Johnny Rayburn
 Charles Rector



Junior Class



Melvin Reese
 Carl Ricker
 Barbara Riddle
 Frances Robertson



Elizabeth Robinson
 Freddy Robinson
 Blanche Rowland
 Betty Jean Shepherd



Brenda Silver
 Troy Silver
 Karen Simons
 Eddie Smith



Eugene Smith
 Richard Smith
 Shirley Sparks
 Felecia Squires

Junior Class

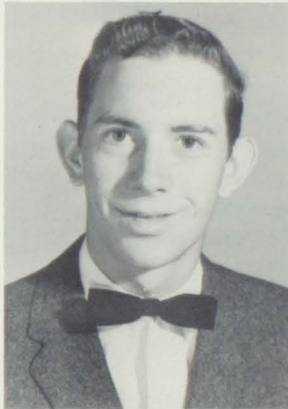
Linda Squires
Elaine Stafford
Francis Stamey
Vivian Stewart



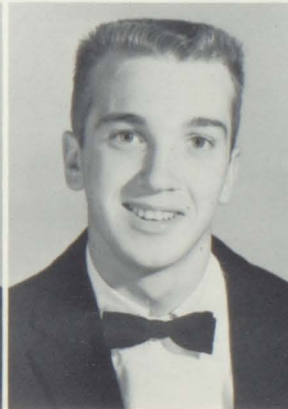
Eloise Styles
Joyce Swafford
Marie Swann
Pattie Bird Talbot



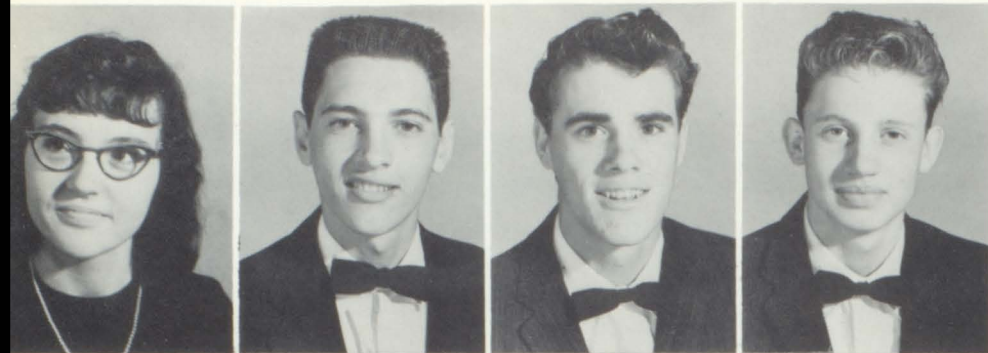
Connie Taylor
Joe Taylor
Jean Tipton
Robert Watkins



Harriett Waters
Don Waycaster
David Whitaker
Bobbie White



Junior Class



Ann Wilds
Ned Willis
Coy Woody
Albert Worley



Irene Worley
Cecelia Wyrick

Not Pictured: Vivian Buchanan, Robert Duncan, Robert Harris,
Scott Hensley, Gerald Morris, Frank Owensby, Joseph Penley.



TOP MAGAZINE SALESMEN

Bobby White, Mary Ham, Charles Blaine, Stanley Brown, Brenda Lindsay, Loretta Hall.

Sophomore Class



Class Officers

Dean Brown - President
Marvin Harper - Vice President

Carol McKinney - Secretary
Faye Fender - Treasurer

Jeane Akin
Avery Allen
Linda Allen
Wanda Allen



Sophomores



Betty Jean Ammons
Joyce Ann Ammons
Myra Armstrong
Bobby Babb



Ronnie Babb
Bobby Ball
Lester Ballew
Daniel Banks



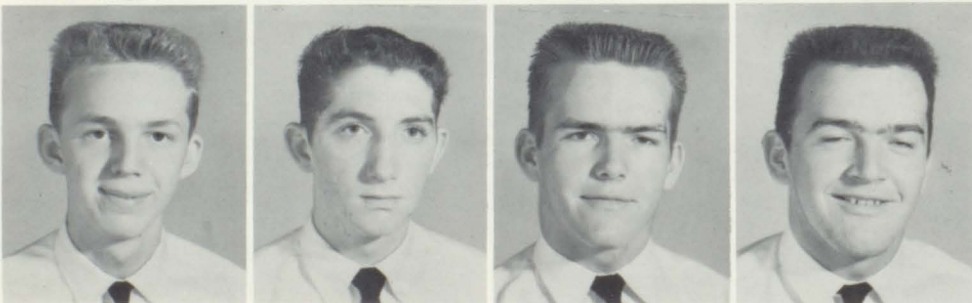
Ray Banks
Brenda Bartlett
Bruce Bartlett
Mary Bartlett



David Bashaw
Betty Joe Basnight
Nellie Beck
Sue Bennet



Boyce Biddix
Joyce Biggerstaff
Ray Biggerstaff
Barbara Bradley



Stanford Brooks
Earl Brotherton
Dean Brown
Lloyd Brown

Sophomores

Ronnie Brown
June Buckner
Bill Burks
Wanda Burleson



Wayne Burleson
Bobby Burnett
Maurice Burnett
Talmadge Burnett



Robert Byrd
Cecil Caldwell
Adelaide Clark
Ruby Clark



Clarence Clough
Leonard Cole
Betty Jean Creasman
Jean Creasman



Leon Dalton
Betty Davis
J. R. Davis
Jackie Davis



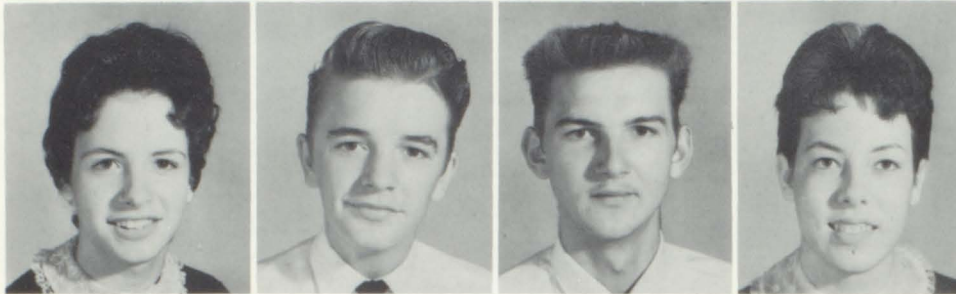
Jimmy Dillingham
Charles Dodge
Betty Ann Douthit
Jean Eller



Sophomores



Lois Elliot
Johnnie Ellis
Judy Evans
Mitchell Farr



Faye Fender
Wesley Frady
Monroe Gilliam
Marsha Glenn



Kay Goode
Kaye Green
Nancy Gregory
Peggy Hamby



Ann Haney
Jake Hardin
Marvin Harper
Jerry Harris



Margaret Harris
Judy Hensley
Caroll Hudgins
Robert Hyatt



James Jackson
Jack Jarret
Jerry Jones
Craven Kindall

Sophomores

Jimmy Kilpatrick
Morris King
Patrica Lawrence
Bobby Ledbetter



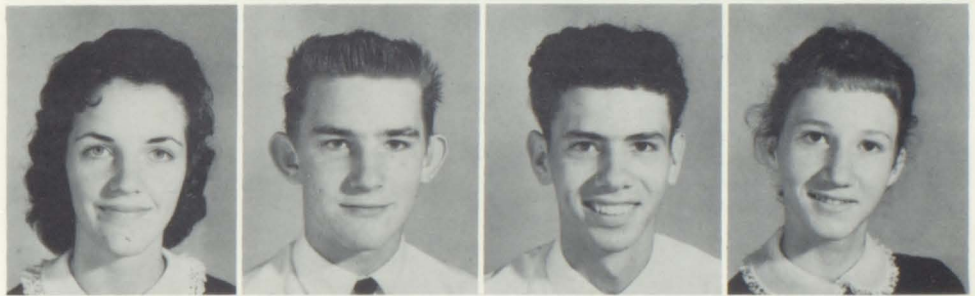
Larry Ledbetter
Bobby Leonard
Charleen Linkston
Anita Luther



Jimmy Lytle
Linda Mahaffey
Evelyn Massey
Willine McCann



Judy McDonald
David McFee
Cid McHone
Hattie McKinney



Carol McKinney
Wallace McKinney
Carolyn McKnight
Pauline McMahan



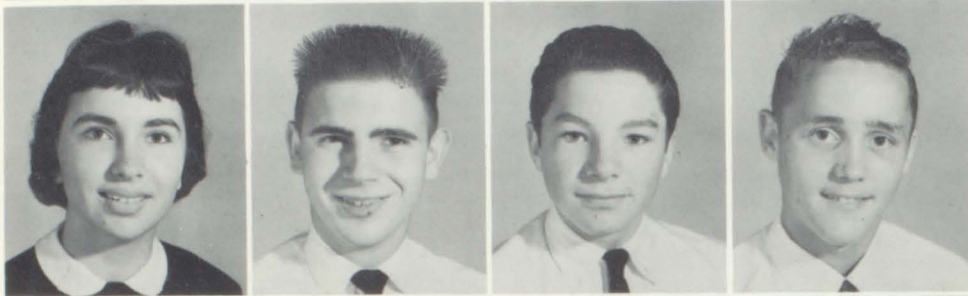
Rosalee McMahan
Bill Meese
Junior Melton
Donnie Merrill



Sophomores



Ronnie Merrill
Melanie Meyer
Don Meyers
Ann Moore



Carolyn Moore
Robert Moore
Tony Moore
Turner Morgan



Louise Morris
Freddie Moyers
Barbara Mundy
Margaret Mundy



Emily Murphy
Libby Nanney
Arnold Nesbitt
Gary Odem



Rex Padgett
Barbara Page
Elaine Parker
Janice Peeke



George Penland
Olivia Penland
Brenda Penley
Mike Peterson

Sophomores

Charles Phelps
Kathleen Philips
Larry Plummer
Dennis Pope



Ann Pressley
David Pressley
Laetitia Pressley
Bruce Price



Firby Ray
Pattie Rayfield
Suzanne Reed
Ronnie Reynolds



Ted Rhodes
Carroll Robinson
Margaret Rogers
Carolyn Roland



Toni Rowland
Carroll Russell
Shirley Self
Shirley Selby



Lewis Severson
Judy Silvers
Kerman Silvers
Billy Slagle



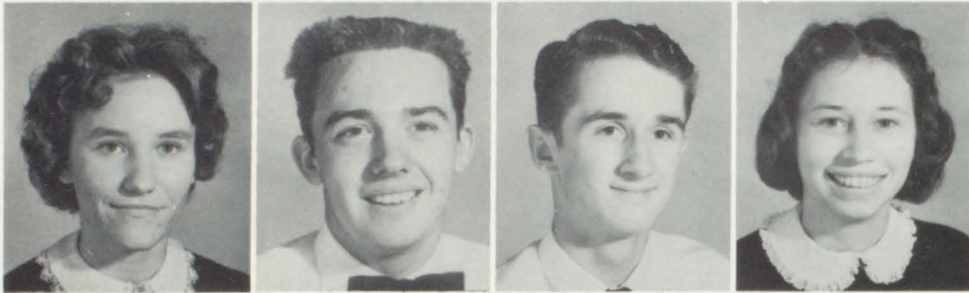
Sophomores



Jack Slaughter
Judy Smith
Julia Smith
Linda Smith



David Snipes
Barbara Solesbee
Piroska Soos
Ben Spivey



Gloria Spivey
Howard Stafford
Charles Stone
Nancy Strickland



Don Stubbs
Linda Surret
Linda Lee Surret
Butch Swafford



Sue Tatham
Preston Timmerman
Mary Francis Thomas
Mary Lou Towe



Jim Trantham
Larry Tweed
Brenda Vess
Faye Waddell

Sophomores

Gene Waldrup
Charles Waters
Ray Watkins
Douglas Webb



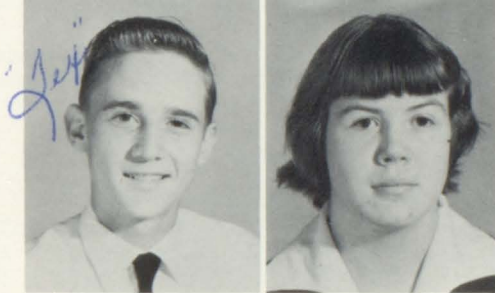
Harold Webb
Larry Whistnant
Joan White
Shirley Williams



Claude Wilson
Ronald Wilson
Virginia Wilson
Marie Worley



Wesley Worley
Betty Owensby



NOT PICTURED:
James Burleson
Alice Feller
Steve Hyder
Mike Kelly
Ronnie Morrow
Jerry Nanney
Monroe Slagle
Paul Stroupe
Jerry Thomas

Freshmen



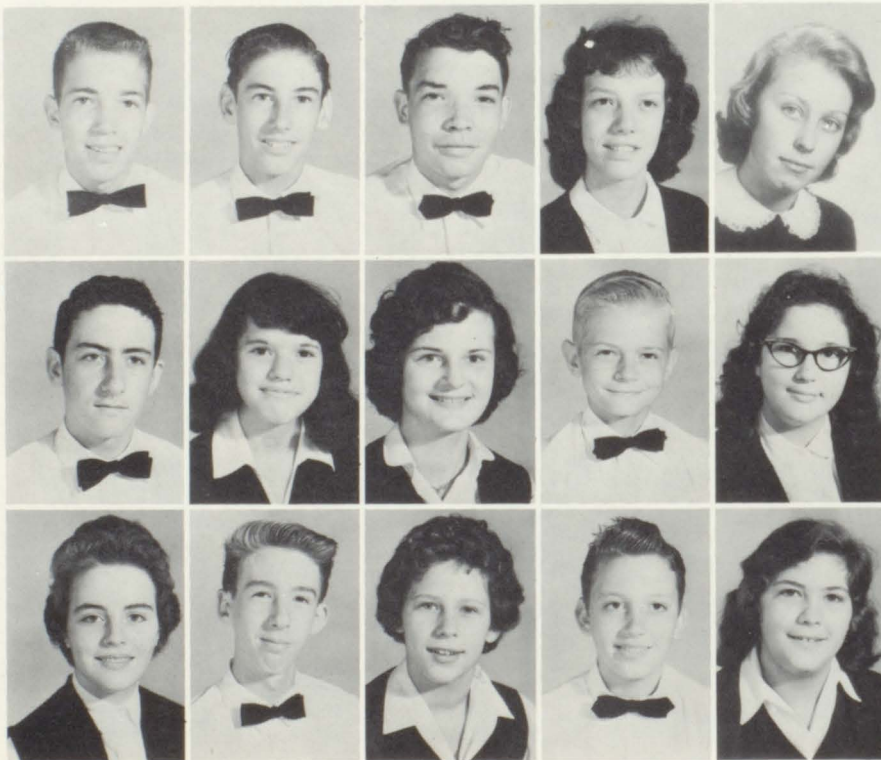
Mac Blizzard
Robert Padgett

PRESIDENT
VICE-PRESIDENT

CLASS OFFICERS

Brenda Glenn
Sharon Davis

TREASURER
SECRETARY



Bernard Allen
David Allen
Emory Allen
Linda Allen
Pat Allen

Frederick Averett
Louise Banks
Flo Barnhill
David Barnwell
Beverly Barrier

Doris Bartlett
Gary Bartlett
Jo Ann Bartlett
Larry Bartlett
Shirley Bartlett

Freshmen

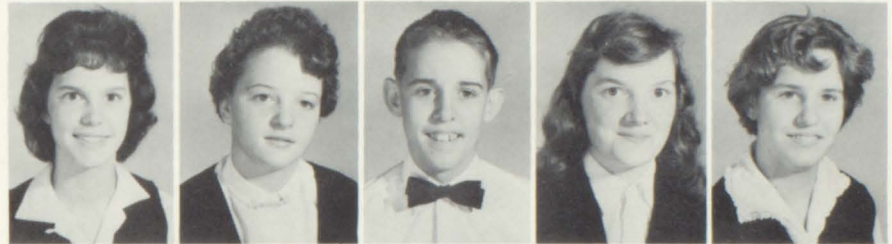
James Beddingfield
Linda Beddingfield
Deana Belcher
Tommy Bell
Dena Biggs



Lewis Blanks
Mike Blaine
Donald Blankenship
Ronald Blankenship
Mac Blizzard



June Boone
Judy Boring
Don Bradley
Helen Bradley
Lillie Bradley



James Bradley
Connie Brown
Jeff Brown
Tommy Brown
Robert Bryant



Gail Buckner
Allan Buckner
Estalene Burleson
Sandra Burleson
Wanda Byas



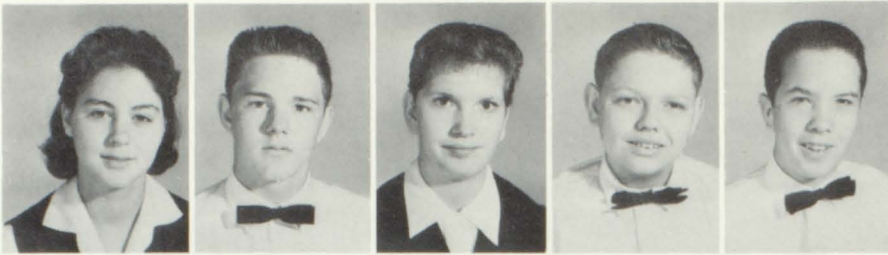
Barbara Ann Capps
Ann Campbell
Clarence Candler
Peggy Chandler
Sam Cole



Dorothy Condry
Betty Conner
Bobby Conner
Talmadge Cook
Barbara Cooper



Freshmen



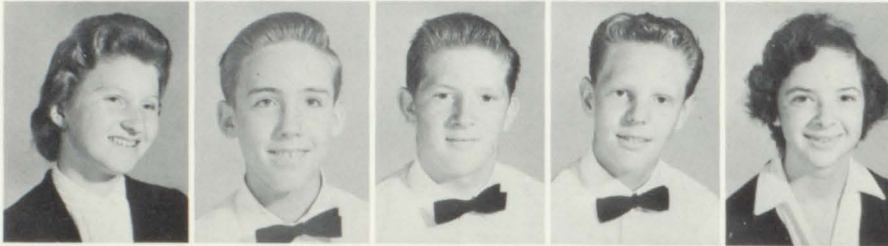
Brenda Cordell
David Cordell
Brenda Cornwell
Alfred Correll
Andy Craig



Jimmy Creasman
Steve Creasman
James Cunningham
Danny Curtis
James Dalton



Franklin Davis
Jack Davis
Mary Davis
Sharon Davis
Jimmy Dodge



Teresa Daugherty
Frank Douglas
David Duncan
James Edwards
Kathy Farkas



Cheryl Faulk
John Ferguson
Margie Fields
Ruby Fields
Norma McMahan



Earlene Gill
Brenda Glenn
Norma Gragg
Tommy Gragg
Elizabeth Graham



Brenda Guffey
Mike Hall
Russell Hall
Elaine Hampton
Sandra Haney

Freshmen

Sarah Haney
Irene Harris
Virgil Hart
Buster Harvey
Carol Head



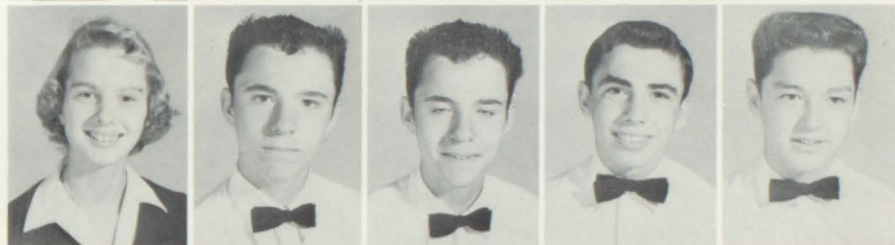
Carole Hensley
Teddy Hensley
Linda Hipps
Janet Holmes
Herbert Howie



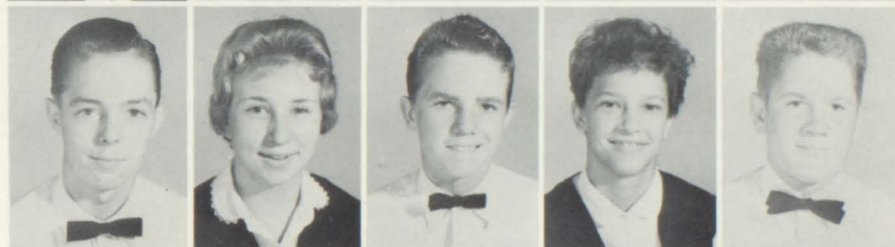
Becky Hudson
Billy Hudson
Tommy Hughs
Judy Hutchins
Leonard Hyams



Linda Hynes
Gary Hyder
Larry Hyder
Eric Jolly
Bob Kelly



Randy Kelly
Maxine Kendall
Kenneth Kerlee
Wanda Knupp
Nicky Kuykendall



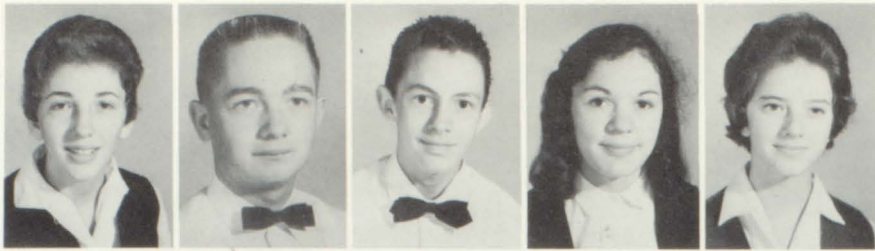
Jimmy Lanning
Joyce Ledbetter
Terry Ledbetter
Teresa Lemieux
Ellen Leonard



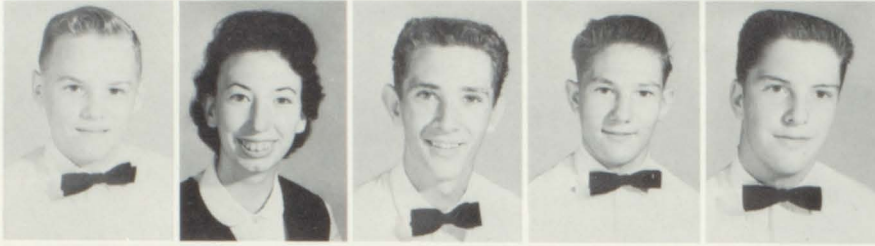
Charles Lewis
Sandy Lindsay
Ema Jean Link
Charles Lovelace
Ronnie Lowe



Freshmen



Barbara Lunsford
Theren Lunsford
Edward Luther
Joyce Marret
Margaret McDonald



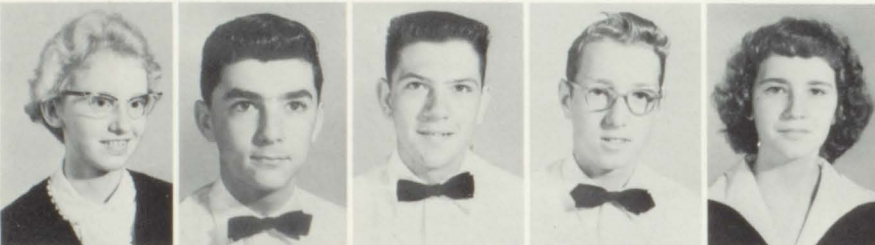
David McElrath
Margaret McFee
Levon McKinney
Robert McKinney
Jerry McMahan



Thomas McMahan
Lucile McPeters
Carolyn Metcalf
Don Metcalf
Shirley Moore



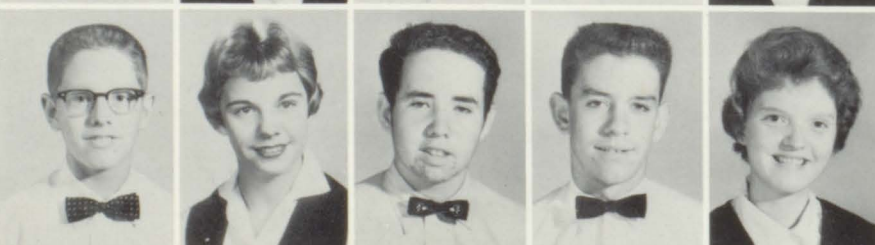
Jimmy Morgan
Sharon Morris
Taylor Morris
John Mundy
Ted Nanney



Glenda Nix
Steve Norwood
Muriel Ogle
Ronald Ogle
Shirley Orr



Robert Padgett
Emaline Parker
Philip Patton
Danny Peek
Brenda Penley



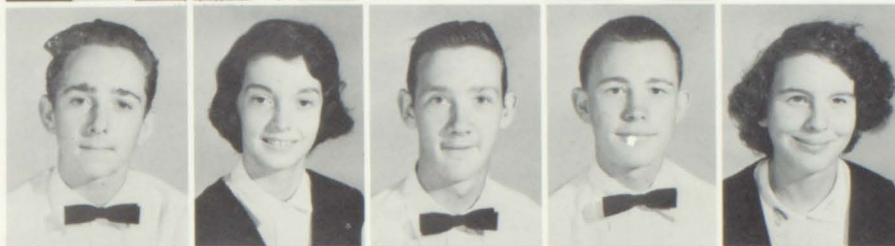
Thomas Penley
Sara Marcia Perley
Fletcher Phillips
Richard Pittman
Claudia Power

Freshmen

Margaret Russell
June Pressley
Gary Price
Jean Putman
Terry Rayburn



William. Reeves
Shirley Raines
Joe Robinson
Carl Rogers
Carol Rogers



Charles Roland
Russell Ronquillo
Don Ross
Freda Russell
Charles Sanders



Arlene Schneider
David Sexton
Ervin Shepherd
Nancy Shope
Jerry Sibbet



Brenda Silvers
Cecil Slagle
Becky Smith
Red Smith
Ted Smith



Joe Solesbee
Marjorie Spivey
Shirley Stafford
Buddy Stevenson
Jean Stevens



Alvin Stroud
Wallace Summey
Betty Swearington
Ugreal Taylor
Bobby Turner



Freshmen



Earl Vaught
Ronnie Watkins
Patsy Watson
Margaret Waycaster
Cleda Wheeler



Vivian Wilds
Joyce Williams
Ray Williamson
Jeanette Wilson
Judy Wilson

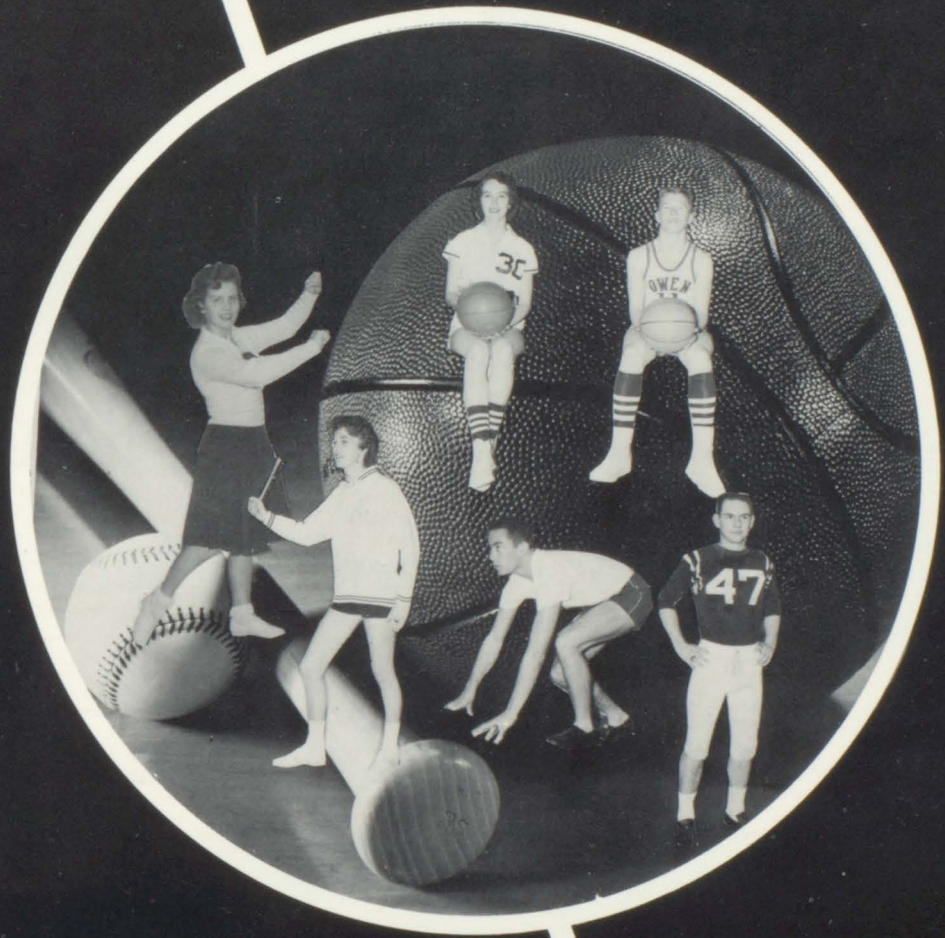


Pat Wilson
Sam Wimberly
Geraldine York

NOT PICTURED:

Sharon Branch
Bobby Calloway
Clifton Cordell
John Hammond
Johnny Hawkins
Roxanna Padgett
Jack Reynolds
Steve Ridge
Buddy Silvers
Homer Stevens
Joyce Taylor
Nathan Webb

Sports





Marvin Harper
Quarterback



Johnny Buckner
End



Vance Lunsford
Halfback



Bill Alexander
Halfback



Bobby Lowe
End



Dean Brown
Fullback



Coaches: Ralph Singleton, Clifford Brookshire, Art Ditt



Cecil Caldwell
Halfback

Owen Warhorses

Jack Davis
Tackle

Howard Lewis
Halfback

Lloyd Brown
Guard

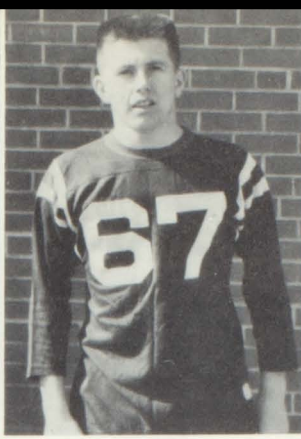
Don Metcalf
Halfback

Johnny McCurry
Guard





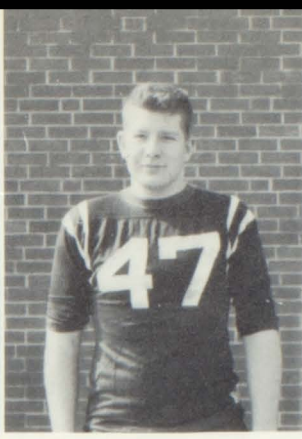
J. D. Roberts
Tackle



Jerry Morrow
Guard



Charles Blaine
Tackle



Freddie Moyers
Fullback



Jackie Hughes
Quarterback



Football Team



Tony Hampton
Captain



Bruce Edwards
Captain

Donnie Ballard
Quarterback

Randy Champion
Center

Kenneth McElrath
Fullback

Eddie Smith
Center

Best of Luck
Mur Peterson
End





Rita Shook
Forward



Daphne Jolly
Guard



Barbara Burke
Guard-Forward



Wanda Lunsford
Guard



CAPTAINS
Emogene Norman
Judy Shirlen



Owen

Linda Hyams
Forward



Jo Ann Cooper
Guard



Suzanne Reed
Forward

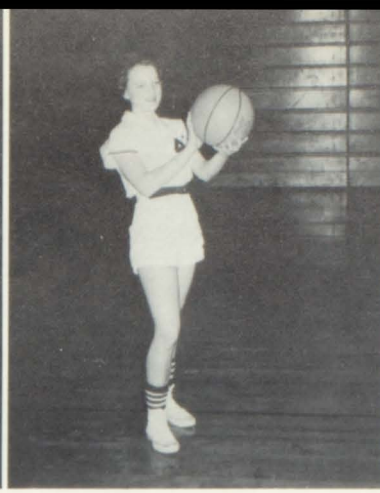


Melanie Meyer
Guard





Kay Greene
Guard - Forward



Judy Boring
Forward



Margaret Harris
Guard



Bobby White
Forward



COACH
Eugene Byrd



MANAGERS
Barbara Riddle
Eloise Styles

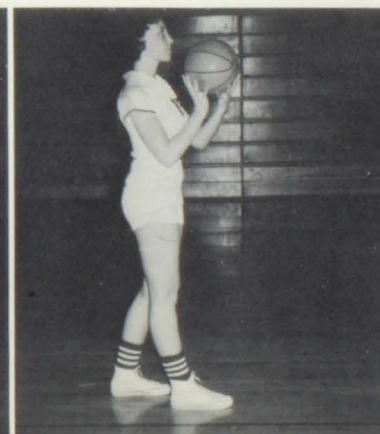
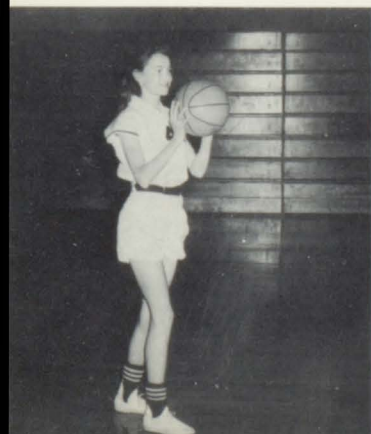
Warlassies

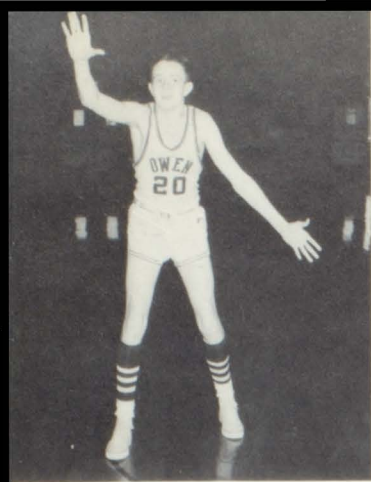
Sandra Haney
Forward

Sue Bennett
Guard

Mary Thomas
Forward

Shirley Pound
Guard

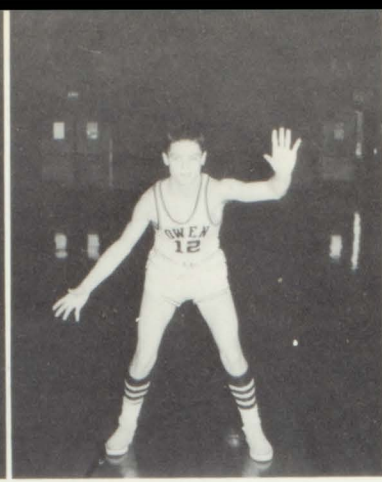




Bobby Lowe
Forward



Sam Morris
Guard



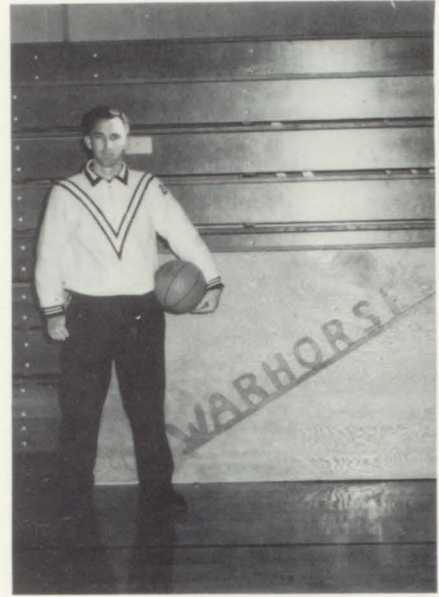
Cecil Caldwell
Guard



Bill Horne
Center - Forward



MANAGERS
Yogi Rector
Charles Lewis

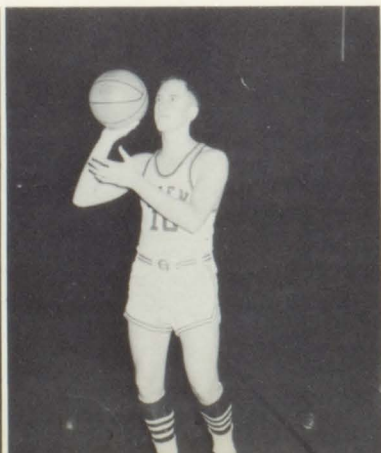


COACH
Ralph Singleton

Eddie Smith
Forward



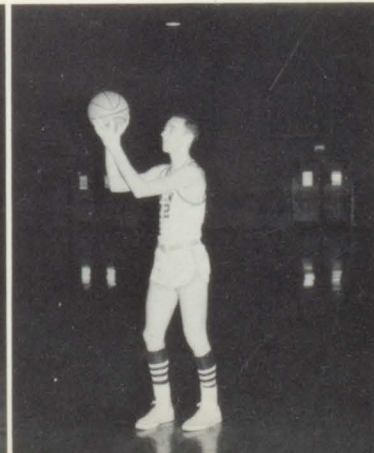
Bruce Clapp
Guard

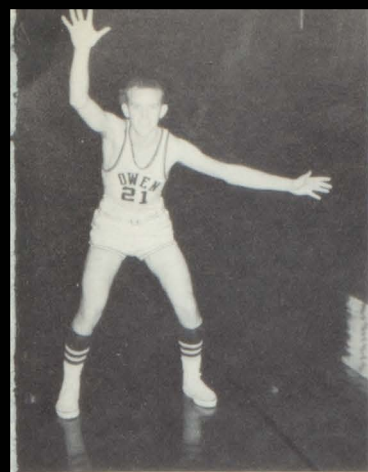


Bruce Edwards
Forward

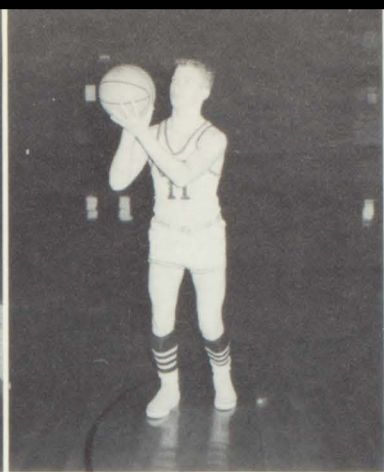


Tim Spiro
Center





Marvin Harper
Guard - Forward



Bud Haney
Guard



Lloyd Brown
Guard



Dean Brown
Center

Owen Warhorses





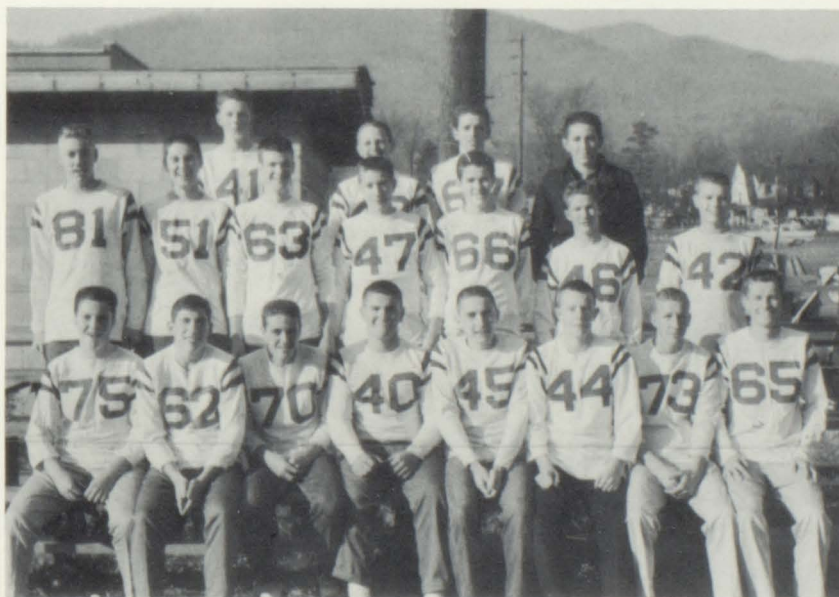
Candidates For 1960 Baseball Team

Candidates For 1960 Track Team





Junior Varsity





Brenda Garland



Padhee Massey,
co-captain



Pattie Bird Talbot,
co-captain



Joan Barnwell

Cheerleaders



Ann Moore



Peggy McElrath



Barbara Solesbee



Beverly Bryan



Sandy Cook



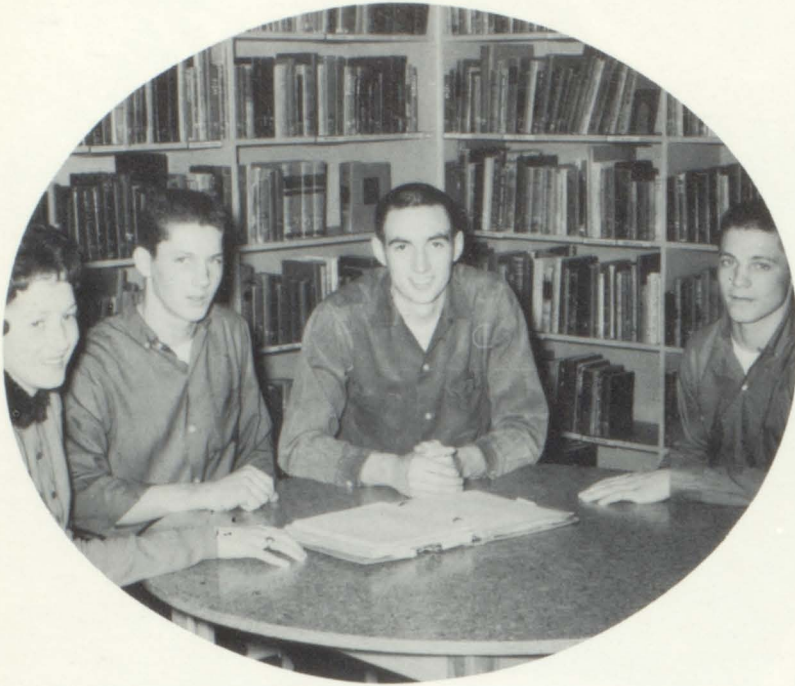
Mitchell Farr



Judy Evans

Activities





OFFICERS

PRESIDENT
Bill Horne

VICE PRESIDENT
Neil Ledbetter

SECRETARY
Beula Adkins

TREASURER
Cecil Caldwell

Student Council

Sponsors
Mrs. Hazel Wilson, Mr. Fred H. Martin



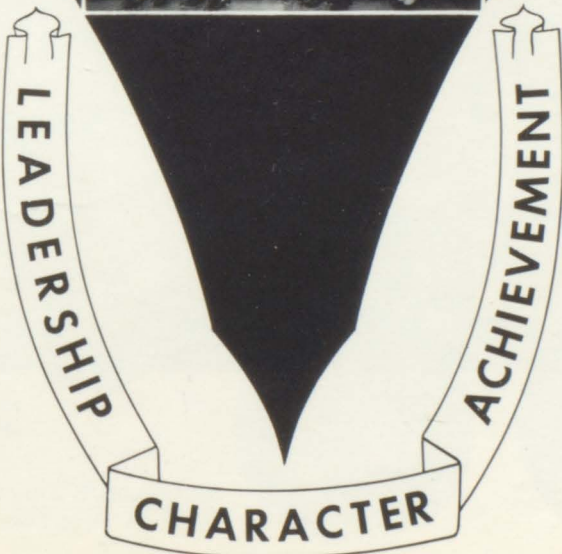


BETA CLUB

PRESIDENT
Robert Brown
VICE PRESIDENT
Douglas Owenby



SECRETARY
Bobby White
TREASURER
Beula Adkins
Sponsor
Mrs. Joyce Parris



Owen Highlights Staff

EDITOR
Jannelle Ledbetter

ASST. EDITOR
Betty Pollard

SPONSOR
Mrs. Joyce Parris



SOCIETY EDITOR
Judy Byrd

SPORTS EDITOR
Judy Sherlin

LITERARY EDITOR
Ann Beddingfield

ART EDITOR
Mary Stockton

BUSINESS MGRS.
Myra Nanney
Alma Watson



Lloyd Moore
BUSINESS MANAGER



Yvonne Belanger
ASST. BUSINESS MANAGER



Myra Nanney
CLUB EDITOR



Mary Hendley
ASST. CLUB EDITOR



Mr. Thomas Hansen
PHOTOGRAPHER

Mrs. Josephine McCoy
SPONSOR



Mrs. Mary Leinster
PRODUCTION SPONSOR

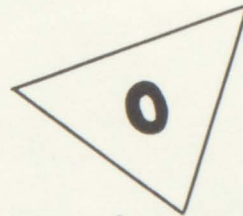
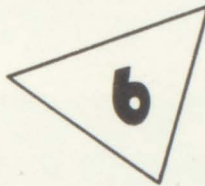
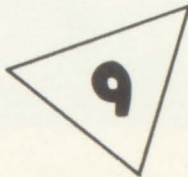
Ann Beddingfield
ASSISTANT EDITOR



Emilie Alexander
EDITOR-IN-CHIEF



Beverly Bryan
STUDENT PHOTOGRAPHER



Robert Brown
STUDENT PHOTOGRAPHER



Bobby White
SPORTS EDITOR



Charleen Meyer
TYPIST



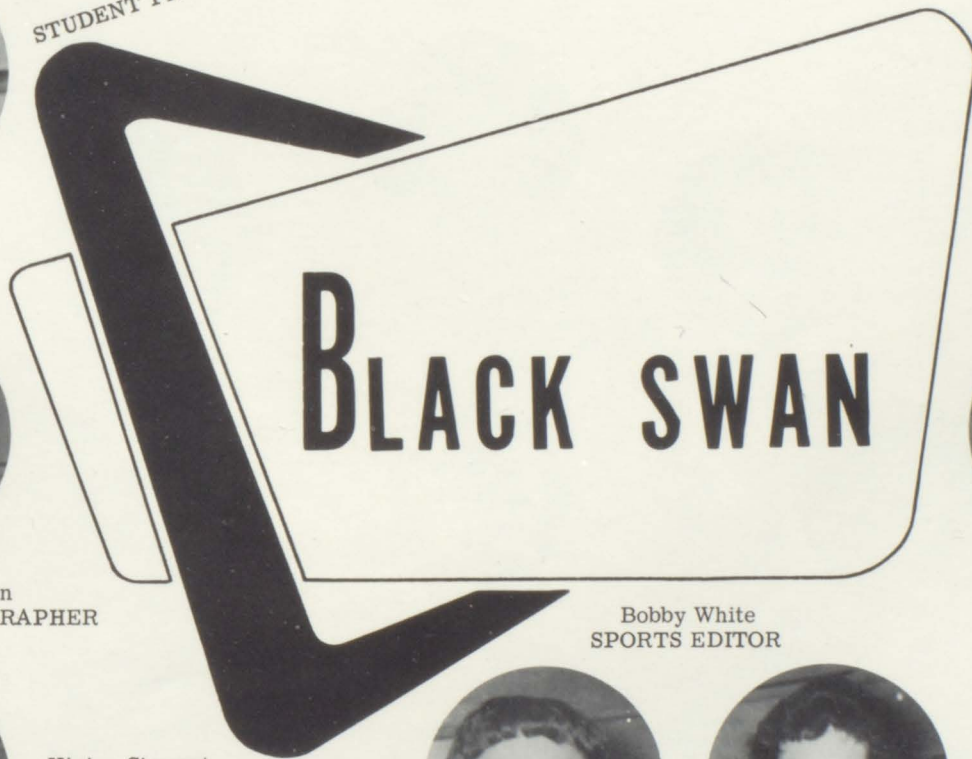
Vivian Stewart
ART EDITOR



Janice Higginbotham
ASST. ART EDITOR



Tim Spiro
SPORTS EDITOR





Future Homemakers Of America

Mrs. Mavis Nesbitt
Sponsor

Pattie Bird Talbot
President

Miss Vera Price
Sponsor

Wanda Lunsford
Song Leader



Kaye Goode
Vice President

Peggy McElrath
Historian



Judy Raines
Secretary



Barbara Burke
Parliamentarian



Barbara Page
Treasurer



Libby Nanney
Reporter

Future Farmers Of America



OFFICERS

Pres.	David Dillingham	Treas.	Thomas Fortune
V. Pres.	Bobby Fender	Sentinal	Garland Miller
Sec.	J. D. Roberts	Reporter	Donald Cooke

Sponsors: Gary Carson, Selmar Neskaug





Future Teachers Of America

Judy Byrd Vice President
 Toni Taylor Secretary
 Dana Kelly Treasurer
 Shirley Moore Historian
 Eloise Noah Reporter
 Lloyd Moore - County President
 Alma Watson - County Secretary
 Ken Morgan Song Leader



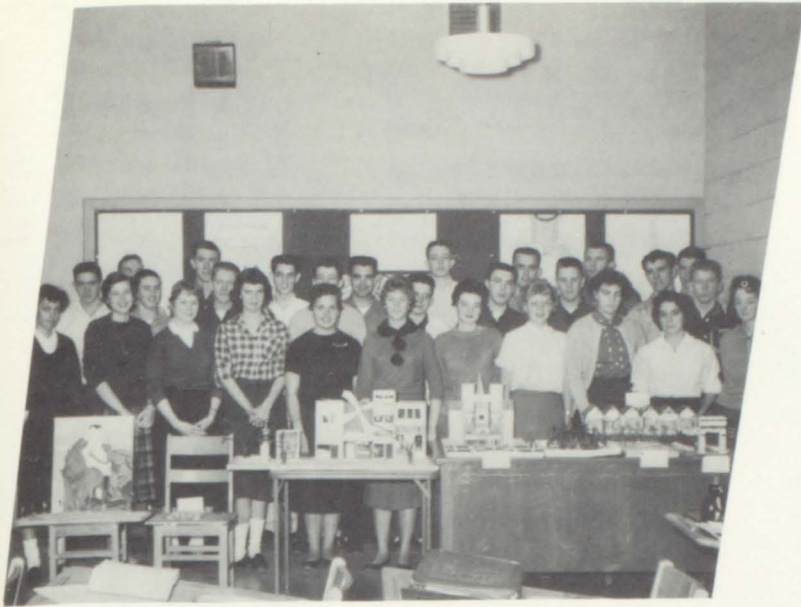
Miss Nancy Wrenn
Sponsor



Betty Pollard
President



French Club



Judy Shirlen President
 Bobby White Vice President
 Wilma Hall Secretary
 Mary Stockton Treasurer
 Mrs. Mary Freeman Sponsor





Latin Club



CONSULS

Carolyn Dotson
 Ronnie Morrow (Not Pictured)

AEDILES

Jannelle Ledbetter
 Robert Byrd

CENSORS

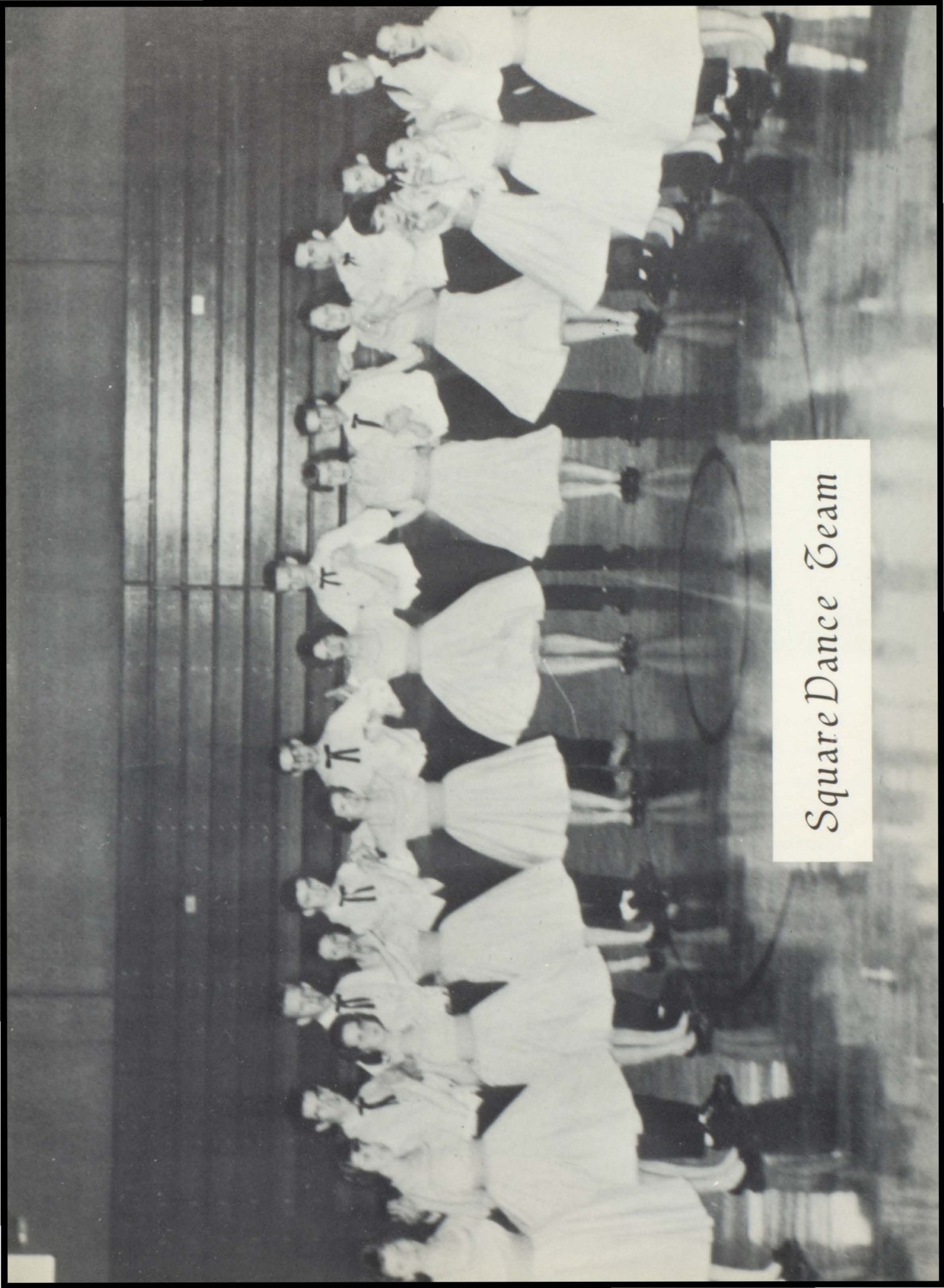
Betty Fortune
 Jack Jarret

QUAESTORS

Adelaide Clark
 Douglas Owenby

SPONSOR

Miss Elizabeth Cole



Square Dance Team



OWEN HIGH SCHOOL CHORUS ~ 1960

OCTETTE

BASS----- Dallas Gragg
 Ned Willis
 TENOR ---- Richard Smith
 Wesley Worley
 ALTO ----- Margaret Melton
 Barbara Pound
 SOPRANO -- Elaine Stafford
 Susan Thomas



OFFICERS

PIANIST ----- Joan Lemieux
 PRESIDENT --- Dallas Gragg
 SEC.-TREAS. - Gail Hall
 LIBRARIANS -- Susan Thomas
 Emogene Norman
 CUSTODIANS-- Johnny Rayburn
 Don Metcalf
 DIRECTOR --- Woodfin C. Rhodes





First Row: Patsy Lee, Gail Hall, Brenda Lindsey. Second Row: Rita Putnam, Linda Connor, and Judy Raines.

Majorettes



Gail Hall - Head Majorette



OWEN HIGH SCHOOL BAND ~ 1960

OFFICERS

PRESIDENT	Charles Aiken
SECRETARY	David Bashaw
LIBRARIAN	Eloise Noah
BAND MANAGERS	Ronnie Morrow
	Jimmy Morgan



DIRECTOR
Woodfin C. Rhodes

Features





May Queen
Gail Hall



May Court

Judy Raines, Maid of Honor, Peggy McElrath,
Charleen Meyer, Brenda Lindsay, Loretta Hill,
Sara Marcia Perley, Joy Ledbetter, Melaine
Meyer, Faye Fender



Barbara Solesbee, Wanda Lunsford, Margaret McDonald, Loretta Hall, Gail Hall, Melanie Meyer, Judy Evans, Faye Fender.

Homecoming Court



QUEEN
Peggy McElrath

Marshals



First row: Chief Marshals, Ann Beddingfield, Bobbi White. Second row: Joan Lemieux, Betty Fortune, Stanley Brown, Padhee Massey, Beverly Bryan. Third row: Shirley Pound, Eloise Styles, Sue Penley, Carolyn Dotson, Donna Bass.

Best wishes to an old and treasured friend.
Judy



Judy Byrd
Scholarship



Tim Spiro
Scholarship



Tony Hampton
Athletics

Hall of
For Outstanding Contributions
Through Music, Athletics,
And

Eloise Noah
Music

Ken Morgan
Music





Robert Brown
Leadership



Emilie Alexander
Leadership

*Fame
To School And Community
Leadership, Service
Scholarship*



Lloyd Moore
Service

Barbara Morris
Service



Bill Horne
Athletics

*Best of
luck to
every thing.
May God be
with you in
every thing you
do. I wish the
most success
in life.
Hoyt*



MOST DEPENDABLE
Beula Adkins, Doug Owenby

BEST SCHOOL SPIRIT
Peggy McElrath, Bruce Edwards



S
u
p
e
r
l
a
t
i
v
e
s

S
e
n
i
o
r



MOST TALENTED
Eloise Noah, Danny Pressley

S
u
p
e
r
l
a
t
i
v
e
s

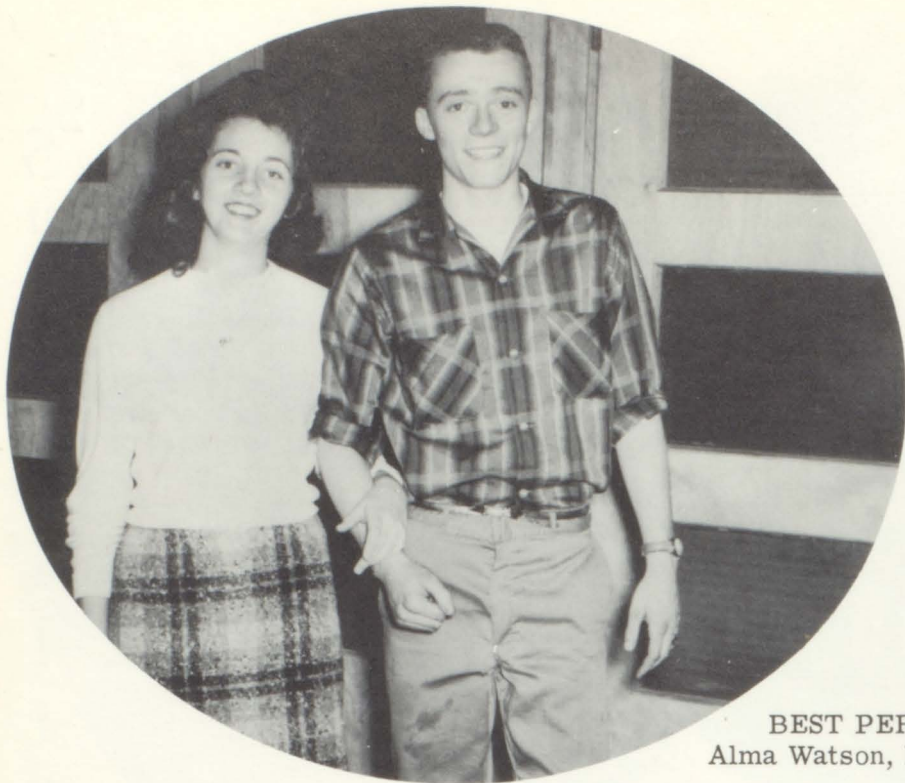
S
e
n
i
o
r

WITTIEST
Barbara Burke, Jack Lunsford



S
u
p
e
r
l
a
t
i
v
e
s

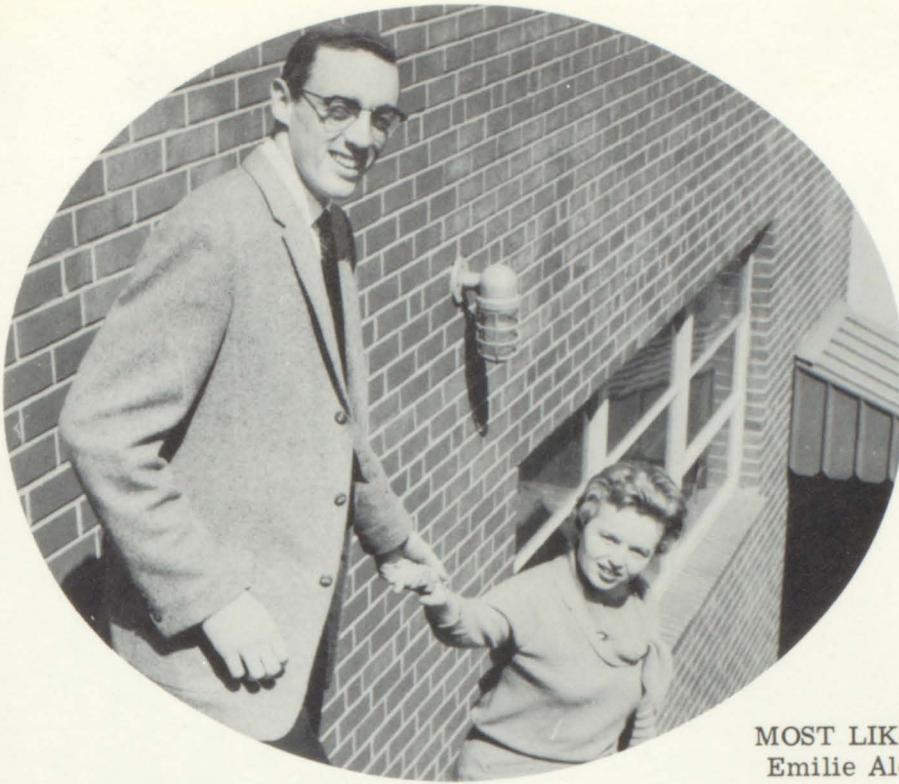
S
e
n
i
o
r



BEST PERSONALITY
Alma Watson, Mack Kirkpatrick

BEST LOOKING
Jannelle Ledbetter, Kenneth McElrath





MOST LIKELY TO SUCCEED
Emilie Alexander, Tim Spiro

S
u
p
e
r
l
a
t
i
v
e
s

S
e
n
i
o
r

FRIENDLIEST
Gail Hall, Donald Cook





Horne, Kirkpatrick, Norman, Fender, Simmons, Duncan, Fortune, Carpenter, Dillingham, Miller, Owenby, Ledbetter, Elliot, Padgett

Bus Drivers





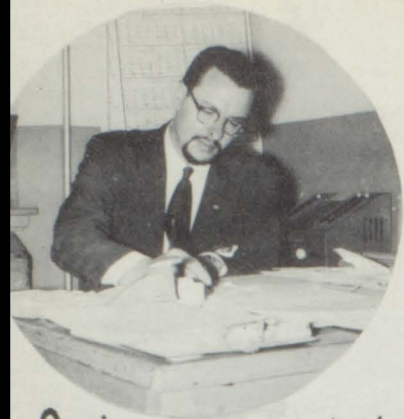
Mrs. Deal, Dietitian, Mrs. Creasman, Mrs. Searcy, Mrs. Turner, Mrs. Taylor, Mrs. Vess, Miss Jones.

Lunchroom Staff School Custodian



Perry Creasman

Moments to Remember



Cool-man-cool !!



TRAPPED!



"C'est dommage!"

"Let's SEE, girls..."



ooh-la-la!



Cha-cha-cha!



S
O
U
P
L
I
N
E



Eh-What?



Watch your finger!



This is a Beta Meeting



SEÑOR FEDERICO MARTINEZ



Betas for '60



ROMANS--OR GHO



MR. RHODES AND THE GIRLS



Now SACK Out !



OFF GUARD



YEA-TEAM !



Station OHS-CBS



ff to SEE THE GUV'NORS



"WE'RE FROM OWEN...COULDN'T BE PROUDER."



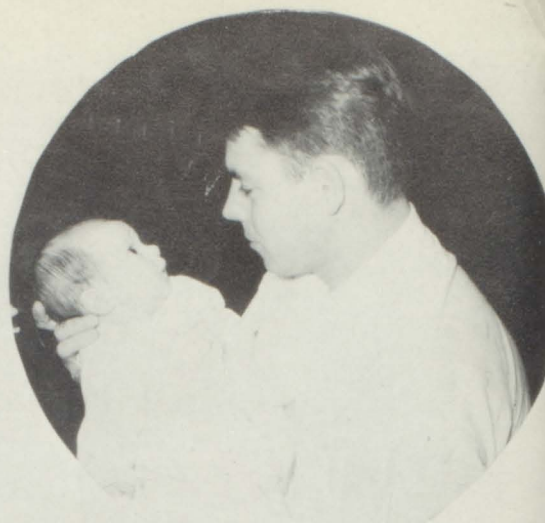
Bill -- WNC ALL-STAR



Looking over their work



Romana Civitas



Papa Hansen



F-HA girls - Raleigh bound!



Queen Peggy



Hi-4 Club



Peek-a-boo, Emilie!



Basketball Finale



Santa takes a rest



Ain't they party?



"Now is the time..."



Venus and Mars



Oh—my Aching back!!



Future CPA's ???



3:05 1/2 p. m.



"U-m-m-m-m"



WhE-E-E-EE!



TEA FOR FIVE



Last chance - boys!



A KEY for SUCCESS



MR. Smith's NEW Home



NO stilet in time!!



