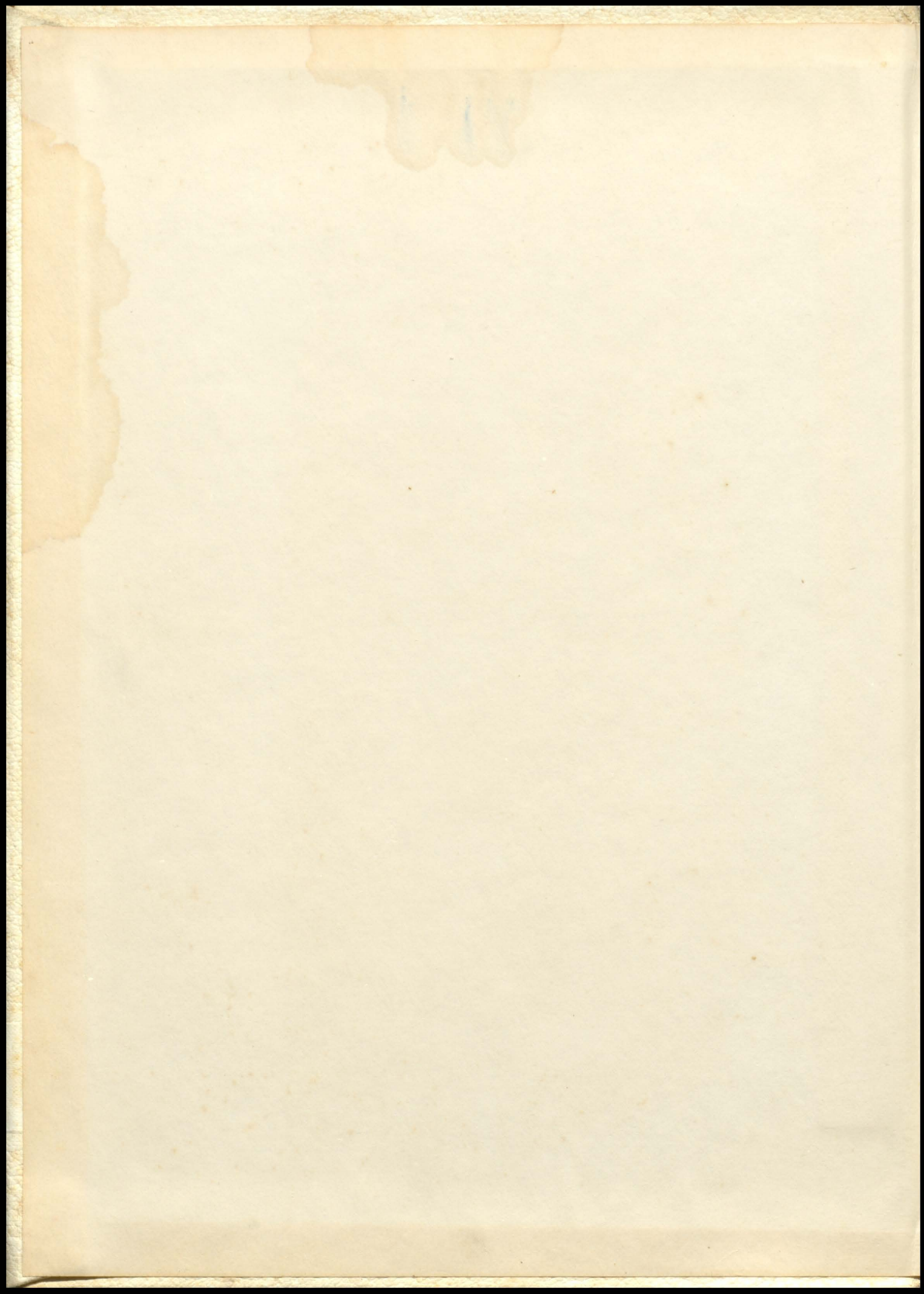
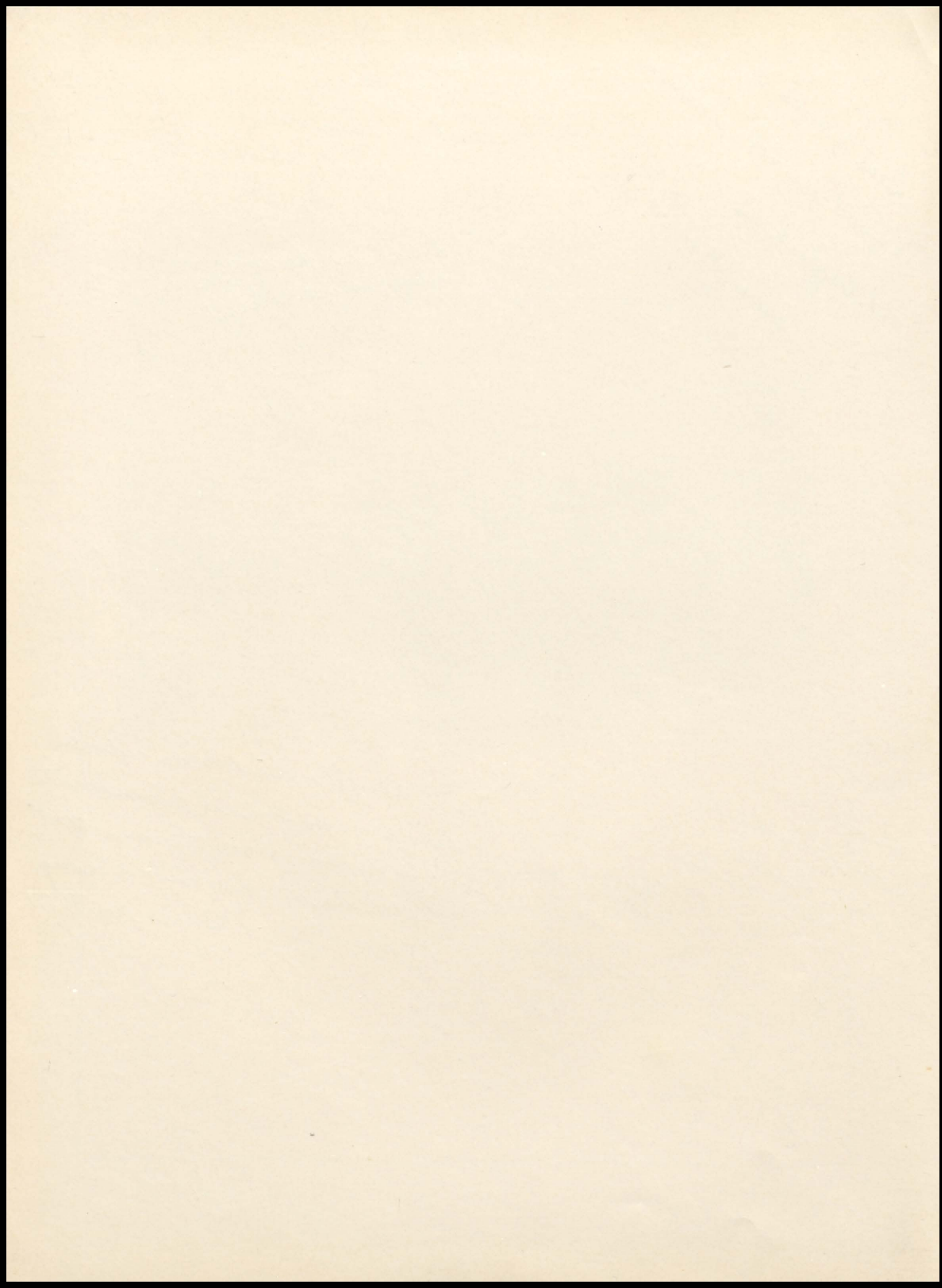
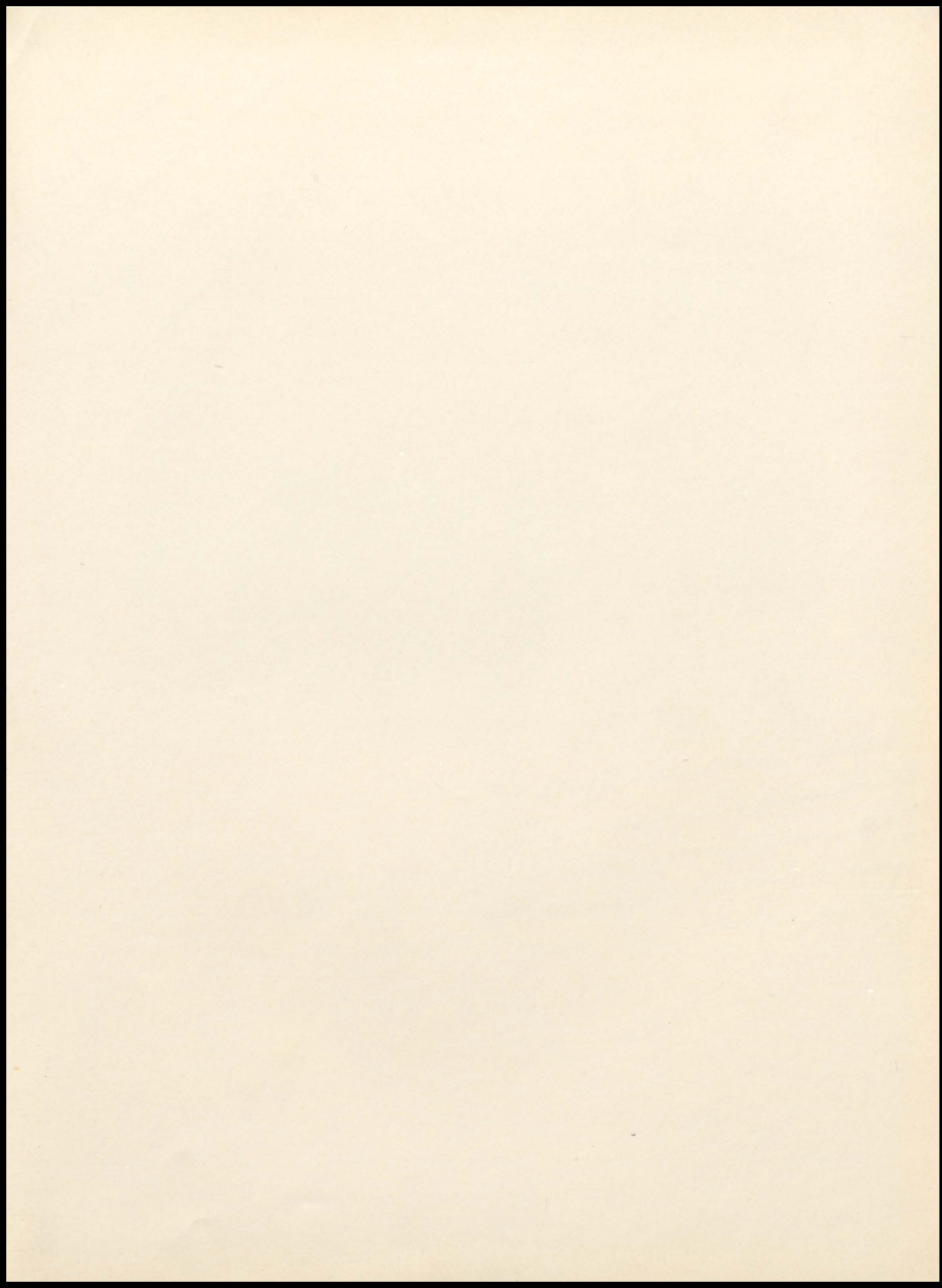


1959

The Black Swan



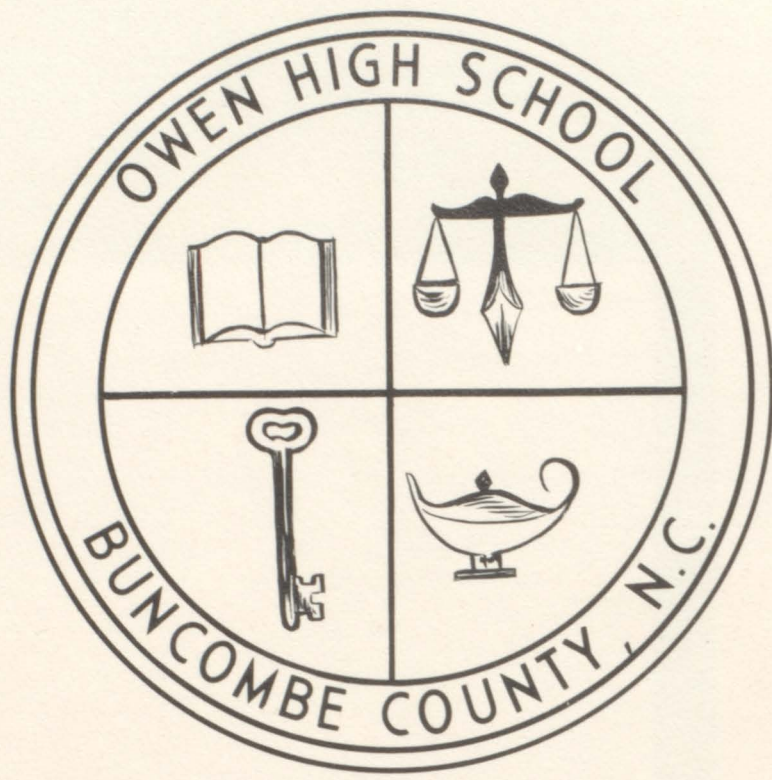




So Dear
to
Our Hearts



NINETEEN HUNDRED AND FIFTY - NINE



The Black Swan

Editor	Nancy DuPuy
Business Manager	Ann Perry
Production Sponsor	Mrs. Eva Russell
Business Sponsor	Mrs. Jo McCoy



gratefully dedicated

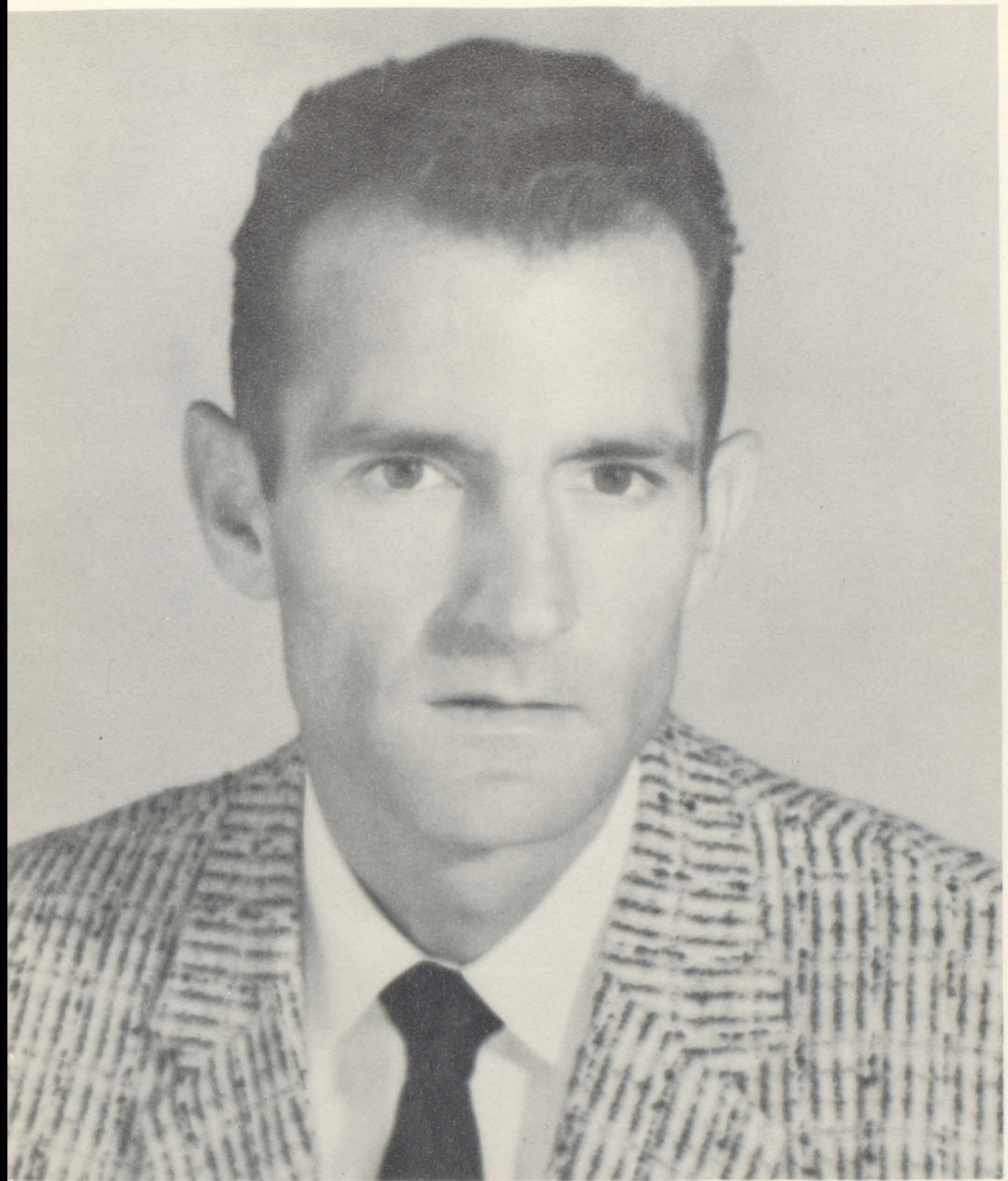
because we shall never forget the laurels he has brought to Owen High.

for his mild manner and his ready wit

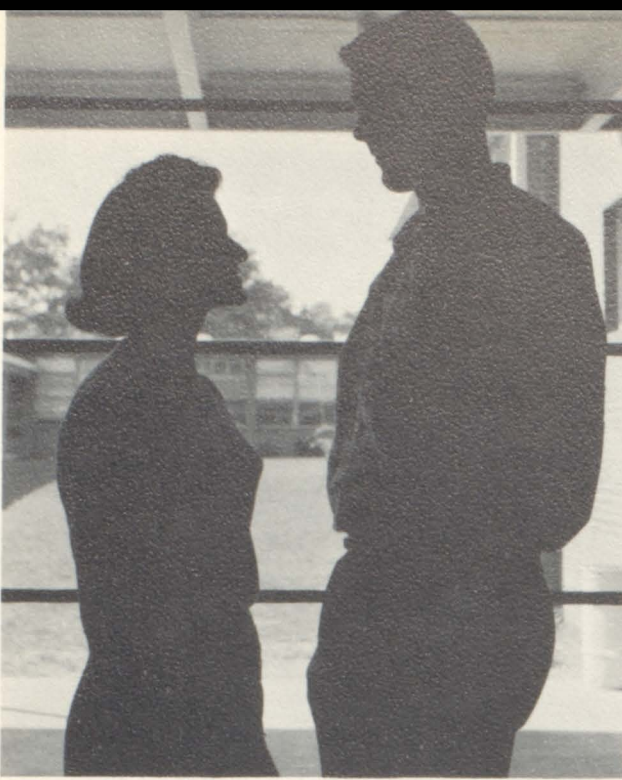
for his love of fair play in sportsmanship

to a capable teacher and coach, Mr. Straehla, we sincerely dedicate this, The 1959 Black Swan





Ned Straehla



FOREWORD

Our lives have been molded by each hour of our high school days the friendships gained, the joyous experiences, the little things which really counted, while we sought to gain the knowledge that others had to share. For with the worry of term papers and reports; the excitement of Homecoming, May Day and Junior-Senior; and then exams and Graduation we realize that all was worthwhile. For these experiences will burn brighter and glow warmer in our hearts, long after high school and we have gone forth to face the new experiences of life. For all of these things are So Dear To Our Hearts.



CONTENTS

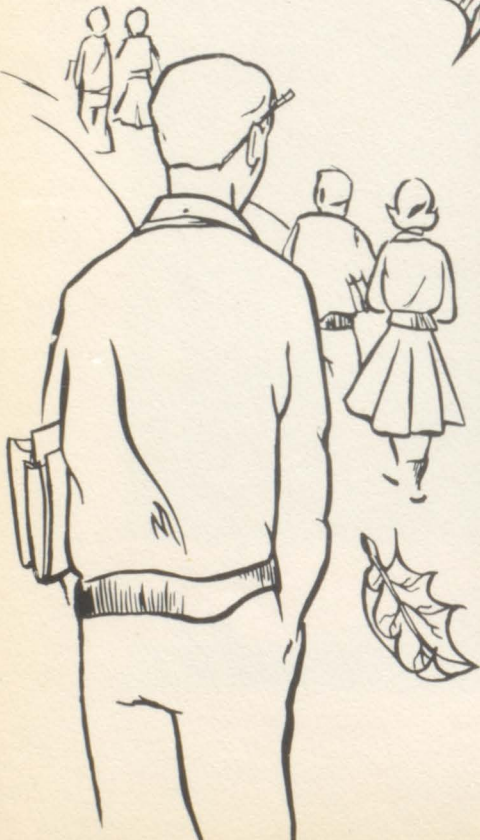
Administration

Classes

Athletics

Features

Advertising





DAY BY DAY... WE

May you have many,
more happy days in
the Library -
Mrs. M. K. Carr,



Day by day we do research and enjoy the vast expanse of books afforded us by this beautiful and well-equipped library.



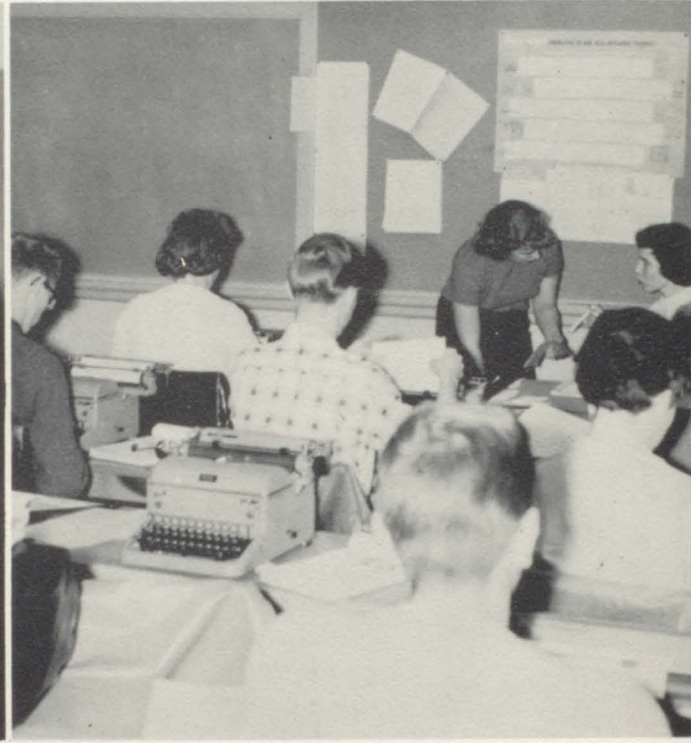
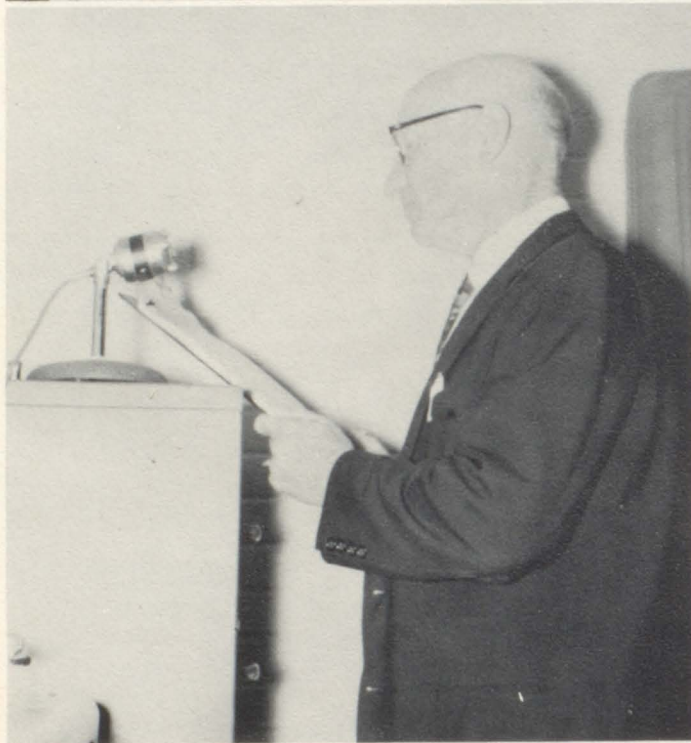
"Engage the mind before putting the mouth in gear . . ." Newest course of study.

Three girls "bake a cake" in the lovely modern kitchen of the School Home Economics Department.



ROAM THE HALLS OF THE SCHOOL WE LOVE...





learning FROM CAPABLE LEADERS...

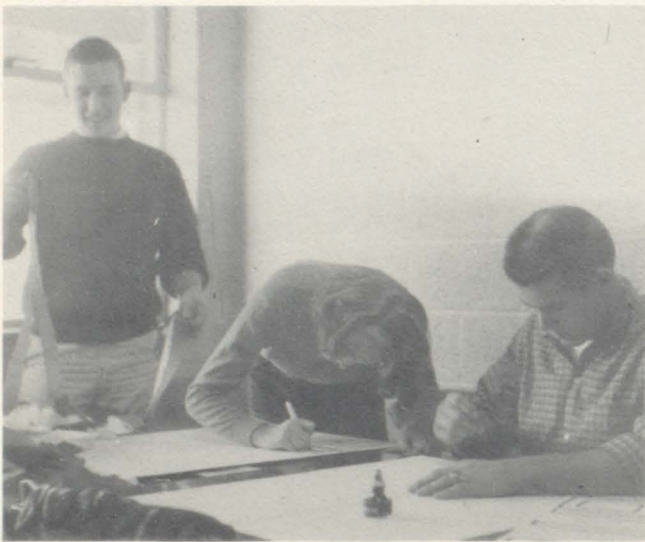
participating IN SCHOOL ACTIVITIES . . .



WE TREASURE BOTH THE *routine*



" . . . we regret to inform you that your remittance is past due . . ." Johnnie Runion takes machine dictation during Office Practice.



Work! Work! Work! Posters, streamers, and cartoons, all are routine, but must be made for any special event. James, Mary and Joe do their part.



Caution! School Bus! James Page points with pride to an object so dear to his heart "No. 106." Approximately sixty students make these trips daily with James.



AND *special events*

WITH OUR DESIRE
TO *know*...



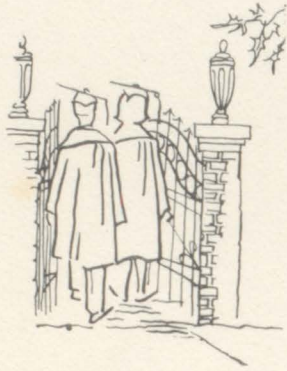


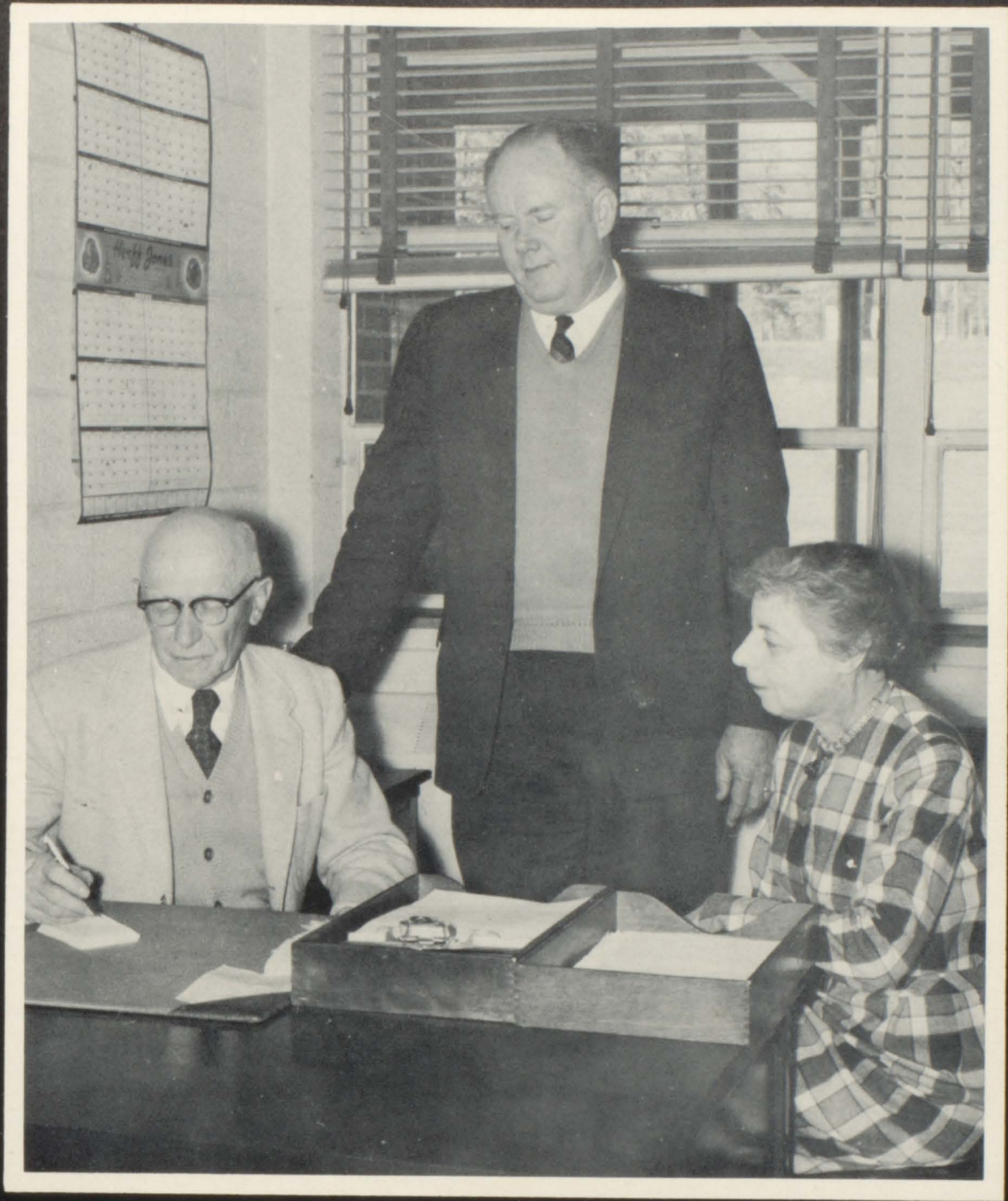
AND OUR LOVE
FOR *leisure* . . .

Owen High



We
Will
Be
True





Administration



Norman C. Shuford, Principal

"He that is thy friend indeed,
He will help thee in thy need."
----Shakespeare

"Should I, after tea and cakes
and ices,
Have the strength to force
the moment to its crisis?"
----Prufrock



FACULTY

Mrs. Elizabeth Brewster, A. B.
Mathematics

Eugene Byrd, B. S.
Social Sciences

Mrs. Margaret K. Carr, A. B.
Library, French, Latin



Gary Carson, B. S.
Agriculture

Elizabeth Cole, A. B., A. M.
Latin

Arthur H. Ditt, A. B., M. A.
Health, Safety & Phy. Ed.



E. Ray Findley, A. B.
Mathematics

Mrs. Mary Freeman, A. B.
English-French

Vernon Kyker, B. S., M. A.
Business, P. E., Coach



Mrs. Mary Leinster, A. B.
Commercial

Mrs. Josephine McCoy, B. S.
Mathematics

Mrs. Mavis Nesbitt, B. S.
Home Economics



T. W. Nesbitt, A. B.
Chemistry

S. R. Neskaug, B. S., M. S.
Agriculture

Mrs. Martha T. Perley, A. B.
English



FACULTY

*With
all
the
misses
for you, Tommy
M. Perley*



J. E. Pratt, B. S., M. S.
History-Mathematics

Woodfin Rhodes, B. S., M. A.
Chorus-Band

Mrs. Eva Russell, B. S.
Commercial



Robert Sluder, B. S., M. A.
Science

Charles F. Smith, B. A. E., M. Ed.
English

Ned Straehla, B. S.
Biology-Coach



Mrs. Joyce Stretcher, A. B.
English

Mrs. Garlene Stutts, A. B.
English

Earl A. Taylor, B. S.
History

*Best wishes!
Garlene Stutts*
*"Tommy", I'll miss that loud
chuckle of yours next
year. The best "Earl"*



Mrs. Jackie Taylor, B. S.
Home Economics

Mrs. H. O. Weeman, A. B., M. A.
Commercial-Treasurer

Ruth White, B. S.
Biology-P. E.



Mrs. Hazel Y. Wilson, B. S.
Science

Nancy Wrenn, A. B.
History-P. E.

FACULTY



Classes



CLASS OFFICERS

President - Dean Ledbetter
 Vice-President - Sue Smith
 Secretary - Mary Bannerman
 Treasurer - Mary Ann Ballard

Ledbetter, Smith, Bannerman, Ballard

BARBARA ALLEN

"Shorty" . . . pony tail . . . quiet "Monalisa" . . . Collins . . . Ed
 . . . T.M. Big B. . . .
 F.H.A. 1; French Club 3; Bible F.H.A. 3,4; JV Cheerleader 1.
 Club 4.

MONA ALLEN

LARRY ATKINS

"Intheoaks" . . . Home of the
 Forestry Club . . . '58 Ford . . .
 F.F.A. 1,2; French Club 3.



TOMMY ALEXANDER

Snowball . . . tennis . . . "Speedy-Gonzales"
French Club 3; Intermural Basketball 1,2,
3,4.

MARY ANN BALLARD

Memie Ann . . . Coke parties at 9 A.M. . . .
Jack . . . Spaghetti and meatballs . . .
F.H.A. 1,2,3,4; Annual Staff 4; Student
Council 2,3; Bible Club 4; May Court 1,
Maid of Honor 3; Chorus 4, Secretary &
Treasurer; Vice President Office Practice
Class 4.

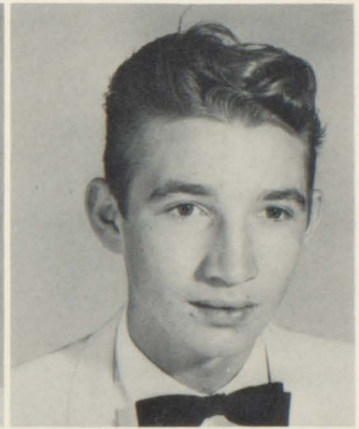


TEDDY BALLARD

Books . . . "CURLY" . . . Bestest Secretary
F.F.A. 1,2.

DEAN BANKS

Coonhunter . . . Wavy Hair . . . Bee Tree
Gang
F.F.A. 1,2,3,4; Glee Club 2,3.

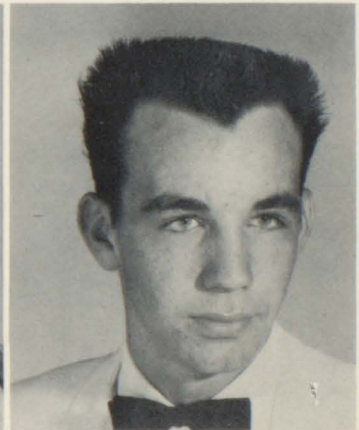


FRANCES BANKS

"Fran" . . . engaged . . . E.B.
F.H.A. 1,2; Bible Club 3,4.

KENNETH BANKS

"Bee Tree" . . . "Mur's Buddy"
F.F.A. 1,2,3,4; Basketball 1,2.



MARY BANNERMAN

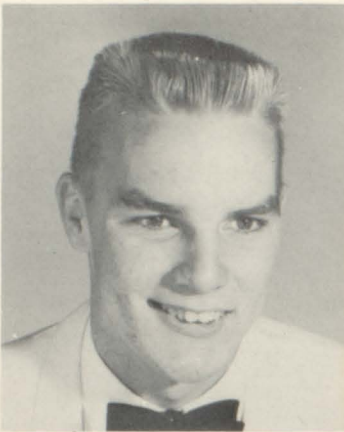
Red hair . . . High Stepper . . . red cape
. . . cute!!!
F.H.A. 1,2 Reporter, 3 Secretary, 4; F.T.A.
3,4; French Club, 3 Treasurer, 4 Treasur-
er; Student Council 2,3; Majorette 3, 4 Head
Majorette; Homecoming Court 3,4; Bible
Club 4; Basketball 1.

BETTY BARTLETTE

Black Plymouth's . . . Marion . . . black
wavy hair . . . "Well Glory"
Chorus 4; Bible Club 4; F.H.A. 1.



SENIORS



JACKIE BENNETT
 "Captain" . . . Long and lanky . . . "Plato"
 Basketball 1,2 JV Capt., 3,4 Var. Capt.;
 Football JV 1,2, Var. 3, 4 Capt.; Baseball
 2,3,4; French Club 3; Bible Club 4; Music
 Club 4.

ANN BLALOCK
 "Elvis" . . . B.F. . . fancy notebook . . .
 "Webb"
 French Club 3,4; F.T.A. 2.



JOE BLANKENSHIP
 Pegged pants . . . ducktail haircut . . . "Lib-
 bie" . . . Blue Convertible
 F.F.A. 1,2,3; Jr. Deputy 1,2; 4-H 1,2; Cho-
 rus 4; Bible Club 4; Music Club 4; Escort
 in Homecoming Court 3.

TOMMY BLIZARD
 "Buzzard" . . . Miami . . . "Suey" . . . Let's
 get some jive on the box."
 JV Football 1; Varsity Football 3; Camera
 Club 1; Band 1,2; Bible Club 4; F.T.A. 4;
 Homecoming Court 4; Forestry Club 4;
 Annual Staff 4.



BARBARA BOONE
 Tomboy . . . motorcycle . . . "Bobbie" . . .
 yellow plane
 F.H.A. 3.

JERRY BRIDGES
 "Jose" . . . Basketball . . . "shotgun" . . .
 Papa . . .
 Baseball 1,2,3,4; Basketball 1,2,3,4; French
 Club 3,4; Bible Club 4; Freshman Class
 Vice President; Jr. Deputy 1,2; Monogram
 Club 1,2.

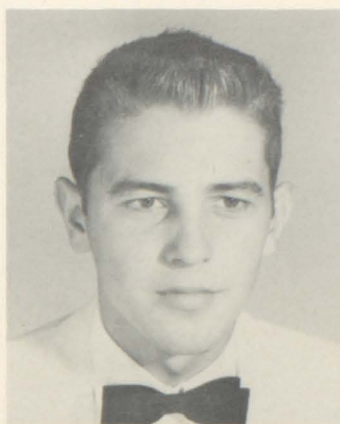


PATSY BRIDGES
 Diamond . . . short . . . long hair . . .
 Bible Club 4; F.H.A. 1.

GENEVA BROTHERTON
 "Neva Ann" . . . Syd . . . future plans
 JV Cheerleader 1; Bible Club 4; Business
 Club President 4.

JOHN BRYANT

Basketball . . . Buckeye . . . "Window" . . .
 "Zorro Meets Lafayette"
 F.F.A. 1,2; French Club 3,4; Baseball 2,3,
 4; JV Basketball 1,2; Varsity Basketball 3.



WENDELL BROWN

B.B. Brown . . . English Tweeds . . . Fender
 Bender . . . Thompson's Shadow
 Latin Club 1,2; French Club 3,4; Beta Club
 3,4.



PERRY BUCKNER

"Buckwheat" . . . Hot Rod . . . Sleepy . . .
 Babe MaLoy's
 F.F.A.

LOUISE BURCH

"Louie" . . . business girl . . . "Gotta get
 my license."
 Chorus 3; Bible Club 4.



DAVID BURGESS

"Pete" . . . Marlboro . . . General Garcia . . .
 French Club 3,4; F.F.A. 1,2,3,4.

JEANETTE BURLESON

"Jo" . . . long hair . . . "Proxy" . . .
 F.H.A. 1; Majorette 1; Class Treasurer 2;
 Student Council 2; Bible Club 4.



ROY BURNETTE

'50 Ford . . . "A & P" . . .
 F.F.A. 1; Jr. Deputies 1.

GAIL CLARK

"Shortie" . . . Collins . . . Wayne . . . dia-
 mond . . .
 F.H.A. 1,2; Beta Club 3,4; Bible Club 4.

SENIORS



JOAN CONNET

Rosey cheeks . . . in a hurry . . . "Let's be friends."

Beta Club 3,4; Student Council 2,3, Secretary 4; Cheerleader 3,4; Music Club 1,2,3, President 4; Latin Club 1,2; Octet 3,4; Girls Sextet 3.

JO ANNE CORNWELL

"Jo" . . . quiet . . . chemistry . . .

Latin 2,3; Bible Club 3,4; Basketball 3; F.T.A. 4.



CARROLL CREASMAN

"Butch" . . . shorty . . . quiet . . .

F.F.A. 2.

HELEN DRAKE

"Shorty" . . . doesn't chew . . . "Proxy" . . .

JV Cheerleader 2; F.H.A. 1,2,3; French Club 1,3; Bible Club 3,4.

DAVID DUPUY

"K4MQZ" . . . Dave . . . spaghetti and meatballs . . . Photographer

Student Council 1; Camera Club 1 Secretary; Beta Club 3,4; French Club 3,4; Annual Staff, Photographer 1,2,3,4; Bus Driver 4; Band 1.

NANCY DUPUY

"Panic" . . . horses . . . BLACK SWAN . . . smiles . . . grades

Student Council 1,3,4; Family Life Conference 1; Homeroom Good Citizen 2; F.H.A. 1, 2 Vice President, 3 President, 4 County Historian; Beta Club 3,4 Vice President; F.T.A. 3,4; Chief Marshall 3; WOW U.S. History Award 3; Annual Staff, Assistant Editor 3; Editor 4; Latin Club 1,2, 3,4; Bible Club 4.



BARBARA ELLIS

Cheese crackers with peanut butter . . .

"Babs" . . . large cokes . . .

Transfer Student 2; Library Club 1; Bible Club 4; French Club 3,4; Annual Staff, Artist 3,4; Band Reporter 4; F.T.A. 4.

ESTHER FARR

Glasses . . . Ward's Drug Store . . . '57 Blue Ford . . .

Majorette 1; F.H.A. 1,2,3 Reporter; F.T.A. 4; Bible Club 4; Latin Club 3.



TONY GARDNER

"Face in the clouds" . . . 6'6" . . . basketball star . . .
 F.F.A. 1,2,3; Basketball 1,2,3,4 Captain 3;
 Bible Club 4; Escort in May Court 2; Es-
 cort in Football Court 3,4; Jr. Deputies 1,
 2; Jr. Achievement 1,2,3; Track Team 1,
 2,3.



LYNN GILL

Late to class . . . "Blondie" . . . State
 College . . .
 Cheerleader 1,2,3,4; F.C.'s 3; Bible Club,
 Program Committee 4; Music Club 4.

PAT GILL

"Scratch" . . . Maroon and White . . . Black
 Chevys . . .
 4-H Club 1,2; JV Cheerleader 1,2; Varsity
 Cheerleader 3,4 Captain; French Club 3,4;
 F.T.A. 3,4; Bible Club 4.



JAMES GRANT

"Grunt" . . . '50 Ford . . . "Speedy" . . .
 F.F.A. 1,2,3.

BARBARA GREGORY

"Bobbie" . . . boys . . . giggles . . . Blond
 curls . . .
 Latin Club 1,2; French Club 3,4; F.H.A. 1;
 F.T.A. 3,4; Cheerleader 3,4; Bible Club 4.



REVONDA GRIFFIN

'57 black Ford . . . ability in chorus . . .
 jokes . . .
 Chorus 4.

BARBARA HALL

Robert . . . smallish . . . G.C. . . .
 Chorus 4; F.H.A. 4; JV Basketball 1.



ELIZABETH HALL

Physics . . . big family . . . Brain . . .
 Speed Typist . . .
 F.H.A. 1,2,3; F.T.A. 4; Latin Club 3,4; Beta
 Club 3,4; Bible Club 4 Secretary; Good
 Citizen 3; Newspaper Staff 4.

SENIORS

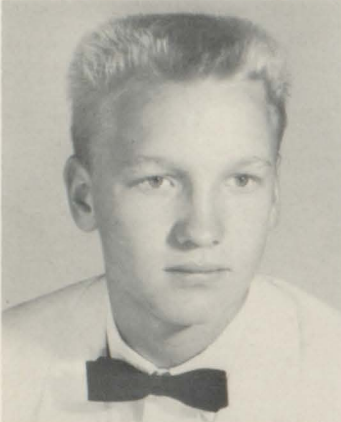


RONNIE HALL

Blue excuse slips . . . flattop . . . "that dumb look" . . .
Football 1,2.

RICHARD HAMILTON

Glasses . . . short . . . "Butch" . . .
Latin Club 1,2.

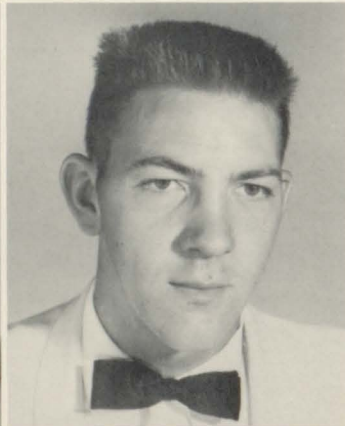


STEVE HANEY

"Dangerous with a knife" . . . Office boy . . .
gang leader

CHRISTINE HART

Long hair . . . quiet . . . "Southpaw" . . .
Bible Club 4; Business Club 4.

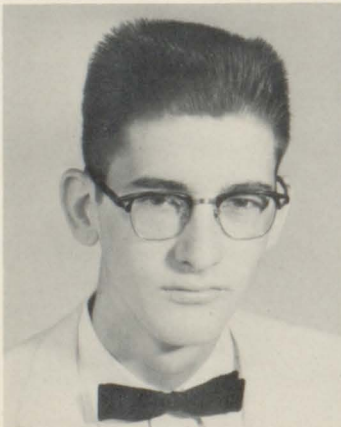


BETTY HAYNES

"Tony" . . . "Quarters, please." . . . Big
M and flat tires.
F.H.A. 1,2; Bible Club 4; Recording Secretary;
Homeroom Secretary 2; Homecoming Court 4.

DAN HENSLEY

"Cob" . . . never in homeroom . . .
glasses . . .
French Club 3; Jr. Deputy 1,2; Student
Council 4.



EDMOND HOGAN

Glasses . . . class ring . . . Blue Ridge
Assembly . . .
Beta Club 3,4; Bible Club 4; F.T.A. 4; Li-
brary Science 4.

RUTH HOLLIFIELD

"Chink" . . . diamond . . . Latin scholar . . .
A & P Store . . .
F.H.A. 1,2; Latin Club 3,4; Beta Club 4;
Newspaper Staff 4.

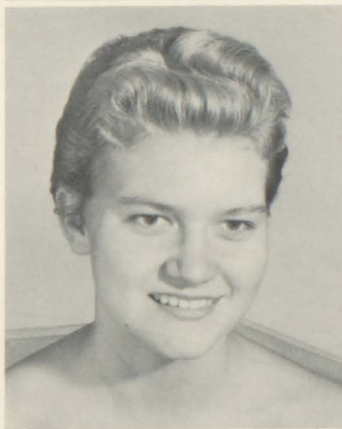
BONITA HOWELL

Marines . . . dime store . . . Charles . . .
Chorus 2; Latin Club 3,4; Bible Club 4.



MARGARET HUDGINS

Driving ability . . . long hair . . . Gary and
white Chevys . . .
Bible Club 4.



CAROLYN HUDSON

Likes to eat . . . Charles . . . F.T.A. meet-
ings . . .
F.H.A. 1,2,3; F.T.A. 3,4 Treasurer; Latin
Club 3,4; Bible Club 4; Chorus 2,3; Music
Club 4; Annual Staff 4.

LYNDA HUNEYCUTT

"Andy" . . . songbird . . . "Flame" . . .
Beta Club 3,4; F.H.A. 1; Bible Club 4; Latin
Club 3,4; Octet 2,3; Chorus 2,3; F.T.A. 4;
Varsity Basketball 3.



DAVID JONES

"Crockett" . . . hookey . . . Speed Demon . . .
F.F.A. 1,2; French Club 3.

EVERETT KENDALL

"E.K." . . . onionhead . . . Curly . . . "Ever-
ready" . . .
F.F.A. 1; French Club 3,4; Forestry Club
4, Crew Chief.



ROY KILBY

"specs" . . . Lumberjack . . . loud jacket . . .

DOROTHY LAWRENCE

"Hortense" . . . long red hair . . . "Wash
lady" . . .
F.H.A. 1,2; Beta Club 2,3,4; Newspaper
Staff 4; Bible Club 4.

SENIORS



JACK LEATHERWOOD
 "Redworm" . . . '55 Chevy (with a chauffer)
 . . . member of "the gang"
 Student Council 1; Jr. Deputies 1,2; Home-
 room Vice President 2,4; Manager Football
 Team 1.

BOBBY LEDBETTER
 "Toot" . . . Straight Eight Pontiac . . .
 Squirrel Hunter . . .
 F.F.A. 1,2,3,4; Football Manager 2; Jr.
 Deputies 1,2.



DEAN LEDBETTER
 "Coon Hunter" . . . Broad River . . .
 mountaineer drawl . . .
 Student Council 1,3,4; F.F.A. 1, 2 Secretary,
 3 Representative to State Convention; Beta
 Club 3,4 President; Good Citizen 2; Class
 President 3; Escort in Homecoming Court;
 Cattle Judging Team 1,3; Sub. Bus Driver
 4.

GAYLE LEE
 "Ability to see 'Red' a mile away." . . .
 office gal . . .
 Transfer Student; F.H.A. 1,2,3,4; 4-H Club
 1; F.T.A. 2; Devotional Club 2; Spanish Club
 2; Y-Teens 2; Bible Club 2,4.



DAVID LOVELACE
 Speeding . . . green '54 Ford . . . "Tater" . . .
 JV Football 1,2; F.F.A. 2,3,4; JV Basket-
 ball 1.

EVELYN JANE McDANIEL
 "Tootsie" . . . alto . . . Black-headed . . .
 Bible Club 4.



BECKY McMAHAN
 "Sonny" . . . Short, Blonde . . . record
 typist . . .
 Transfer Student 3; Library Club 1,2; F.T.
 A. 1,2; Latin Club 1,2; Math Club 2; Stu-
 dent Council 1; Homeroom Reporter 1,2;
 Beta Club 3,4; Chorus 1; Newspaper Staff,
 Assistant Editor 4; Bible Club 4.

LEAH MCKINNEY
 Jokes . . . Blue Ridge Road . . . glasses . . .
 Chorus 3,4; Bible Club 4.

CHARLES McPETERS

Short bangs and a stovebolt "six" . . . "Little Bro--ther"
Bible Club 4; F. T. A. 3, 4; Music 4; Chairman of Homeroom Bulletin Board 4; French Club 3, 4.



HELEN MANEY

"Songbird" . . . A. F. . . . "a certain smile" . . .
F. H. A. 1; Chorus 1; Bible Club 4.

DAVID MARETT

"'57 Ford" . . . Clemson . . . sleeps in class . . .
Basketball 1; Jr. Deputies 1, 2, 3, 4.



JOYCE MARTIN

"Blondie" . . . long hair . . . Ward's Drug Store . . .
F. H. A. 1, 2, 3; JV Cheerleader 1; Bible Club 4; Basketball Manager 4.

JOYCE ANN MARTIN

"Red Head" . . . '56 Chevy . . . sweet . . .
F. H. A. 1; Bible Club 4.



VIVIAN MASON

"Bebbie" . . . smallish . . . chorus girl . . .
Bible Club 4; Chorus 1, 3, alto section leader 4.

DELORES MELTON

"De" . . . quiet . . . "Grandma" . . . French Scholar . . .
F. H. A. 1, 2; Beta Club 3, 4; French Club 3, 4.



DIANE MILLER

"Poet" . . . knee socks . . . "Minnie Pearl" . . .
Beta Club 3, 4; F. H. A. 1; Chorus 2, 3; F. T. A. 3, 4; Track Team 1, 2, 3, 4; Latin Club 3, 4; Bible Club 3, 4; Manager of Varsity Basketball 4.

SENIORS



CAROLYN MILLS
 "Morning Glory" . . . blue '57 Ford . . .
 Hillbilly songs . . .
 F.H.A. 1,2,3,4; French Club, 3 Reporter,
 4 Reporter; F.T.A. 3, 4 Historian; Beta Club
 3,4; Bible Club 4; Newspaper Staff 4.

STANLEY MOORE
 "Bradshaw" . . . has key to Ridgecrest . . .
 "Little Bro--ther"
 F.F.A. 1; Jr. Deputies 1,2; Bible Club 4;
 Class Artist 4.



BILL MORGAN
 "Elvis" . . . females . . . "I don't have a
 line, it's all the truth!"
 F.T.A. 3,4 Song Leader; Bible Club 4; Beta
 Club 3,4; Chorus 2,3,4; Class President 2;
 Student Council 3; French Club 3,4; Music
 1,2,3,4; Octet 2,3,4; Jr. Marshall 3.

CAROL MORRIS
 "Skating" . . . giggles . . . enjoys lunch!! . . .
 F.H.A. 1; Chorus 3,4.



JAMES MOYERS
 "Big Mo" . . . "27" . . . "Hudson-Tub" . . .
 JV Football 1; Varsity Football 2,3,4 Cap-
 tain; Student Council 2,3,4; Bible Club 1,4;
 Jr. Deputies 1,2; French Club 3 Vice Presi-
 dent, 4 President; Chorus 4; Baseball 4;
 Track Team 1,2,3,4; Bus Driver 4.

HARRY NANNEY
 "Green Monster" . . . D.C.A. Jive . . .
 "Forneys" . . . "All Root" . . .
 Camera Club 1; Band 1,2; Bible Club 4;
 Forestry Club 4.

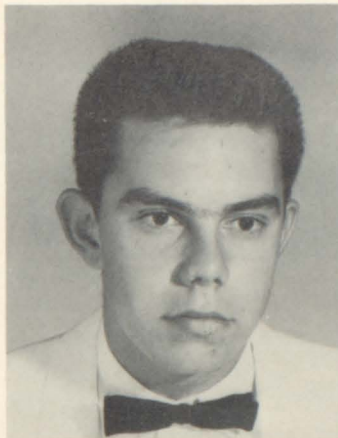


MARGIE NELSON
 "Green eyes" . . . 'Tater chips and R.C.'s
 . . . Blue Plymouths . . .
 Bible Club 4.

DIANNE NESBITT
 "Blushes" . . . easily excited . . . pretty
 eyes . . .
 F.H.A. 1,2,3 County Parliamentarian, 4
 Songleader; May Court 1; Chorus 2,3;
 Octet 2,3; Librarian 2,3; Track Team 1,
 2; Cheerleader 3,4; Latin Club 3,4 Presi-
 dent; Student Council 3,4; Beta Club 3,4;
 Homecoming Court 3; Class Treasurer 3.

FREDDIE NEWTON

"Fig" . . . studious!!! . . . "Tally Ho" . . . Football 2,4; Basketball 1,2,3; Baseball 4; French Club 3; Music Club 2,3.



HELENE NICHOLS

"Class-Skipper." . . . late to class . . . "roving reporter" . . . Latin Club 3,4; Beta Club 3,4; F.H.A. 1,2,3,4; F.T.A. 3,4 Secretary; Cheerleader 3,4; Music Club 2,3,4; Newspaper Staff, Business Manager 4; Bible Club 4; Representative to Girls' State 3.



BARBARA NORMAN

"Bobbie June" . . . Secretary . . . partial to black . . . F.H.A. 1,2; Bible Club 4.

JAMES NORTON

"Bad" Norton . . . D's Buddy . . . Speed Demon . . . "Plumber" . . . Football 1; F.F.A. 4.

CARROLL NORWOOD

"Handsome" . . . S.P.C.A. . . "Kiss of the Hops" . . . "Coonville" . . . Escort in May Court 3; Escort Homecoming Court 4; Camera Club 1; Band 1,2; Music Club 4; Student Council 1; F.T.A. 4; Bible Club 4; Homeroom Reporter 4; Homeroom Officer 1; Debating Team 4; Salesmanship Award 3; Latin Club 2,3; Forestry Club 4.



ALBERT PADGETT

"29" . . . blue eyes . . . "shotgun" . . . females . . . F.F.A. 1; French Club 3,4; Bus Driver 3,4.

JIM PAGE

"Yellar" . . . smells a forest fire 200 miles away . . . "106" . . . F.F.A. 1; French Club 3; Annual Staff 4; Bus Driver 3,4; Track Team 3,4; Band 1; Student Council 1; Forestry Club 3,4; Jr. Deputies, 1 President; Bible Club, 4.



BETTY PATTON

"blonde hair" . . . boys . . . "My embryonic New Orleans accent" . . . slam-bam driver . . . F.H.A. 1,2,3; Beta Club 3,4; Cheerleader 3,4; F.T.A. 3,4 County Treasurer; Homecoming Court 4; Chorus 4; Latin Club 3,4; Bible Club 4.

SENIORS



JUDY PATTON
 "freckles" . . . '56 Ford . . . "Jerk" . . .
 F.H.A. 1,2,3; F.T.A. 3,4; Latin Club 3;
 Bible Club 4; Band 1.

EDWARD PAYNE
 "36 Chevy" . . . Geometry . . . Frauline . . .
 Latin Club 1; Jr. Deputy 1; French Club 3,4.



ANN PERRY
 "Talk now, think later" . . . chemistry . . .
 loves jokes . . .
 Basketball 1,2,3; Band 1; Music Club 1,2,
 3,4; F.T.A. 3, Vice-president 4; Bible Club
 4; Latin Club 2,3,4; Chorus 4; Annual Staff
 4, Business Manager; Beta Club 3,4.

LORETTA B. PLEMMONS
 "Rett" . . . '55 Ford . . . "Homemaker" . . .
 F.H.A. 1,2,3.



SHIRLEY PRESSLEY
 "Wedding Bells" . . . easily embarrassed
 . . . "giggles" . . .
 F.H.A. 1,2,3,4; F.T.A. 3,4; J.V. Basketball
 1; Bible Club 1; Track team 1,2,3,4.

MARLENE PYATTE
 "Butch" . . . quiet and sweet . . . Bright
 eyes . . . J.V. Cheerleader 2; Varsity 3;
 F.H.A. 1,2; Vice pres. 3, President 4; Stu-
 dent Council 2.

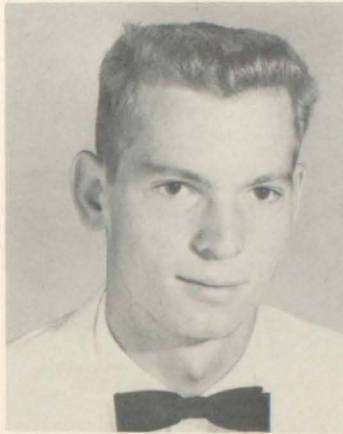


FREDDY REED
 "Loves" study . . . "Sammy Sneed" . . .
 goes to "Put-Put" . . .
 4-H Club 1; F.F.A. 1,2; French Club 3.

BILLIE SUE RICKMAN
 "Busy Billie" . . . soda jerk . . . The Late
 Miss Rickman . . .
 Bible Club 4; F.H.A. 1,2,3; JV Basketball
 1,2; Varsity Basketball 3; Track Team 1,
 2,3.

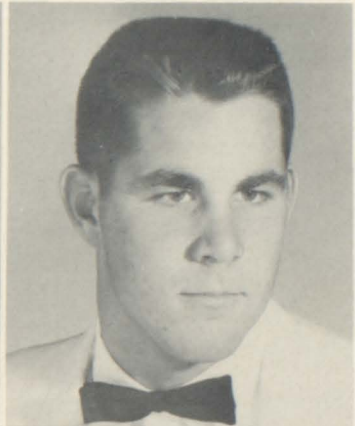
BROOKS ROBERTS

Drug Store Cowboy . . . "OnionHead" . . .
Man About Town. . .
F.F.A. 1; French Club 3.



TALMADGE ROBERTS

"red" . . . radio fan . . . Yellow Trucks . . .
F.F.A. 2,3,4; Jr. Deputies 1,2,3,4.



ANNE ROBINSON

"Black Plymouth" . . . likes red . . .
Marion . . .
Chorus 3; Bible Club 4.

JOE ROBINSON

President of E.S. Club (Eleen Sims) 3,4 . . .
"43" . . . V.I.P.
Class President 1; Class Secretary 2; Class
Vice President 3; Latin Club 1,2; Bible Club
4 Vice President; Football 1,2,3,4; Baseball
1,2,3,4; Track Team 1,2,3,4; Student Council
1, 3 Vice President, 4 President; Home-
room President 1,2,3,4; Jr. Deputies 1,2.

ALLAN RONQUILLO

Motorcycle boots . . . Creol . . . New Orleans
drawl . . .
Spanish Club 2,3; F.T.A. 4; Football 1,2,3,
4; Track Team 1,2,3; Baseball 1,2,3,4;
Music Club 4.



JOHNNIE RUNION

Long blonde hair . . . Sugar and Spice . . .
quiet . . .
Track Team 2,3; Beta Club 3,4; Bible Club
4.

WENDELL RUNNION

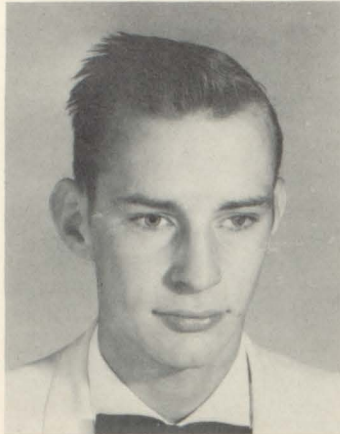
"Tiny" . . . flattop . . . English Brain . . .
F.F.A. 2; Football 2,3,4; Track Team 3,4;
Jr. Deputies 1,2.



BETTY JEAN SHOOK

"Pokey" . . . piano . . . "Pray for strength!!!" . . .
Latin Club 1,2,3,4; Chorus 2 Assistant
Pianist; F.T.A. 3,4; Beta Club 3,4 Secretary;
Bible Club 4; Jr. Marshall 3; Library
Science 4.

SENIORS



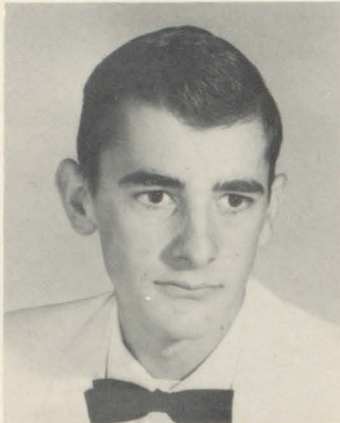
ELEEN SIMS

Joe's Football . . . pizza . . . coke parties at 9 AM. . .

F.H.A. 1,2,3,4 Parliamentarian; Homecoming Court 4; Bible Club 4 President; Chorus 4 President; Student Council 4; Homeroom Secretary and Treasurer 2,4; Annual Staff 4.

BOBBY SMITH

Orange Merc . . . Sideburns . . . Mustache . . .



SUELUNDY SMITH

"Susie Q" . . . football fan . . . "Go! Fight! Win!" . . .

Latin Club 1,2; French Club, Secretary 3,4; May Court 3; Beta Club 3,4; 1st Place U.N. Essay 3; F.T.A. 3, Reporter 4; Music club 3,4; Cheerleader 4; Homecoming Queen 4.

ERVIN SNEED

"Sneaky" . . . Chevys . . . "Jerk" . . . F.F.A. 1,2,3,4; Jr. Deputies 1,2.

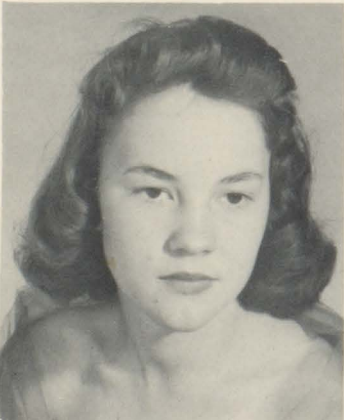


RONALD SOLESBEE

"Lover Boy" . . . Pontiac fan . . . typing . . . Camera Club 1; Jr. Deputies 1,2,3.

ROBERT SPARKS

"Cotton" . . . shotgun . . . "Stinkey" . . . F.F.A. 1,2,3; JV Football 1,2; JV Basketball 1; Basketball 2,3,4; F.F.A. Reporter 2,3; Jr. Deputies 1,2; Monogram Club 2.



NORMA SPIVEY

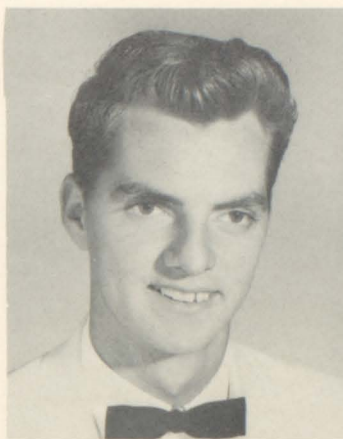
"Cindy" . . . long hair . . . "Sleepy" . . . Chorus 2,3,4; Bible Club 4.

AMELIA STAFFORD

"Algebra II fan" . . . 5'7" . . . long, brown hair . . . Bible Club 4; French Club 3,4.

ANDY STAFFORD

"Deerslayer" . . . size 13 1/2 shoes . . .
 "Hollywood" . . .
 JV Basketball 1; JV Football 1; French
 Club 3; Glee Club 2,3,4; F.F.A. 1.



CAROLE STAFFORD

"Puff, puff" . . . red shoes . . . "Jim"
 French Club 3,4; 4-H club 3,4; Bible Club
 4; F.T.A. Club 3,4; JV Cheerleader 1,2;
 Cheerleader 4.

JERRY STAFFORD

"Curly" . . . Marion . . . Customized
 Chevy . . .
 F.F.A. 1,2,3,4; Jr. Deputy 1,2,3.



NORMA STEPHENSON

"Bed-time stories" . . . Boys!!! . . .
 "Problems" . . . Jokes . . .
 F.H.A. 1,2,3; F.T.A. 3,4; Bible Club 4;
 Music Club 2,3,4.

PHILLIP STONE

"Blue eyes" . . . arguments . . . "Rock" . . .
 class ring . . .
 Jr. Deputy 1; F.F.A. 1,2,3,4.



JOHN STRICKLAND

"Judy" . . . homeroom . . . "Florida" . . .
 skates . . .
 F.F.A. 1, District Representative 2,3; 4-H
 Club 1, reporter 2; Camera Club 1,2; Foot-
 ball 1,2.

CAROLYN STROUD

Honor roll . . . quiet . . . good handwriting . . .
 F.H.A. 1; Jr. Marshall 3; Beta Club 3,4;
 Bible Club 4.



JEWELL STROUD

"Rosy cheeks" . . . '57 Chevrolets' . . .
 long week ends . . .
 F.H.A. 1,3.



SENIORS



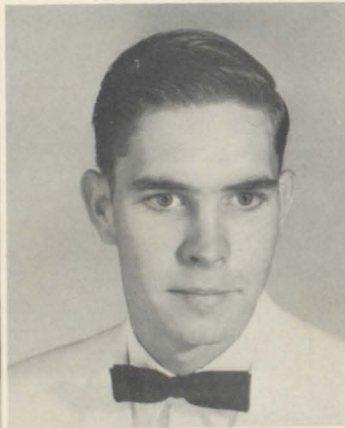
DANIEL STROUPE
 1938 Pick-up truck . . . "Not necessarily"
 . . . "Dan'l" . . .
 F.F.A. 1,2,3,4; French Club 3; JV Basket-
 ball 2; Forestry Club 4.

DONALD SURRETT
 "Tin Can" . . . Stock in Cutter Laboratory
 . . . "Stroupe's Brother" . . .
 F.F.A. 1,2,3,4; May Court 1; Bible Club 4;
 JV Football 1,3; Football 4; Jr. Deputy 1,2;
 Forest Club 4; Track 1; Class artist 4;
 President of J.S. Club, 3,4.



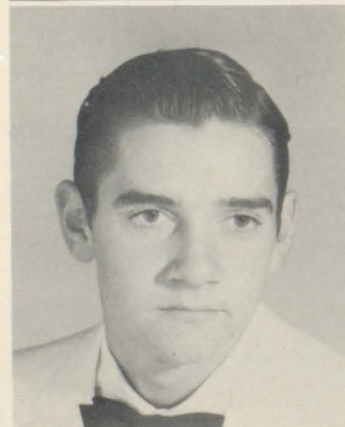
GEORGE TALBOT
 "old 17" . . . Preacher's kid . . . "Addy"
 . . . short . . .
 Latin Club 2,3,4; Bible Club 4; Bus Driver
 4; Music Club 3, 4; Football Mgr. 2,3; Annual
 Staff 4; Forestry Club 4.

ALAN TAYLOR
 "Ferguson" . . . Marshall . . . "Birdie" . . .
 rubdowns . . .
 Music Club 4; Latin Club 3,4; Basketball
 Mgr. 3,4; F.T.A. 4; Band 1,2.



BARBARA TAYLOR
 "Roy" . . . quiet . . . December 20 . . .

ROBERT TAYLOR
 "Beagle hounds" . . . '37 Packard . . . loves
 to hunt . . .
 Transfer Student.



RONALD THOMAS
 Hunting . . . Ronnie . . . "Weed" . . .
 French Club 3; Forestry Club 4; Baseball
 2,4; Football 2,4.

CHARLES THOMPSON
 "You're not wrong Jack" . . . Annapolis . . .
 "Professor" . . . "yellar" . . .
 Band 1,2; Beta Club 3,4 Treasurer; French
 Club 3,4; Jr. Marshall 3; Class Secretary 3;
 Student Council 4; Jr. Deputies 1,2.

PATSY TRAVIS

"Little Bit" . . . soda jerk . . . "Grey" . . .
F.H.A. 1,4; JV Cheerleader 1.

ELIZABETH VAUGHT

"Joe" . . . blue convertibles . . . "Libby" . . .
Track team 1,2; Latin Club 1,2; Bible Club
4; Music Club 1,2,3,4, Secretary 3; News-
paper Staff 3; Chorus Reporter 4; Assist.
pianist 4; F.T.A. 3.



TOMMY WAGNER

"'51 Chevy with busted fender" . . . "moody"
. . . Vaagner . . .
Latin Club 1; Band 2; French Club 3; F.T.A.
4; Bible Club 4; Forestry Club 4; Sales-
manship award 3.

CAROL WATKINS

"Tom" . . . Montreat . . . lunchroom moni-
tor . . .
F.H.A. 1; Student Council 4; Bible Club 4.



LEWIS WATKINS

"Wad" . . . tall and lean . . . has sandy
blond hair . . .
JV basketball 1,2; F.F.A. 1,2,3,4; 4-H Club
1,2,3.

JEAN WAYCASTER

"Chewing gum" . . . glasses . . . pony tail . . .
Bible Club 4; F.H.A. 2.



LOUISE WEAVER

"Smiley" . . . specs . . . waitress . . .
Bible Club 4.

JAMES WEST

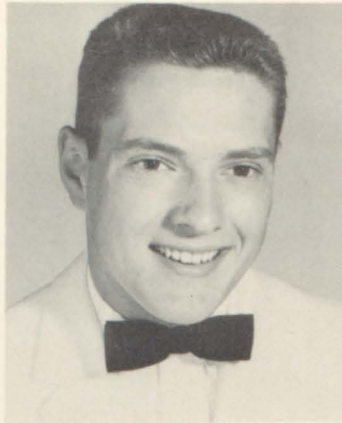
"Playboy" . . . blue jacket . . . "Applachian
Trail" . . .
Jr. Deputy 1,2; Beta Club 3,4; Bible Club 4;
Latin Club 3,4; Newspaper Staff 4; Annual
Staff; Student Council 4; F.T.A. 3,4; Music
Club 4; Forestry Club 4; Homecoming
Court 4; Head Salesman 3.



SENIORS

TONY WILLIS

"Eittle Eillis" . . . Lucky No. 5 . . . Road-runner . . .
Class Vice President 2; French Club 3;
F.F.A. 1,2,3; Best Citizen 1; Bus Driver
3,4.



SUSANNE WILSON

Brown eyes . . . W.C.U.N.C. . . . Woman
Driver!!! . . .
Latin Club 1,2; Chorus 1; Bible Club 4; F.
T.A. 4.

PAT WIMBERLY

"Black slacks" . . . motorcycle . . . Elvis
Pressley . . .
F.H.A. 1,2,3; Bible Club 4.

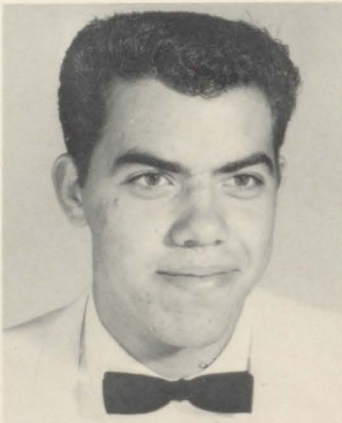


ANNE WOODCOCK

"Kearns" . . . Fords . . . Editor's Blues . . .
F.H.A. 1,2,3,4; F.T.A. 3,4 President; Bible
Club 4; Newspaper Staff, 3,4 Editor; Beta
Club 3,4; Sub. Cheerleader 3,4; Latin Club
2,3,4; Student Council 1; Track Team 2,3;
Music Club 1 Reporter 2,3,4.

JOHN WOODY

"Nebo" . . . Bus 128 . . . "Big John" . . .
F.F.A. 1,2,3,4; Football 2,3,4; Music Club
4; E. S. Club 1,2; Forestry Club 2,3; 4-H
Club 1; Track Team 3,4; Jr. Deputies 1,2;
Bus Driver 3,4.



MARGARET WORLEY

"Margie Lou" . . . Newberry's . . . Fords . . .
Bible Club 4; Class Treasurer 1; 4-H Club
1,2.

Not Pictured
JOHNNY ADAMS
JAMES DAVIS
ASHLEY FRADY
JOE KIRSTEIN
HOWARD MCKINNEY
DAVID YOUNG

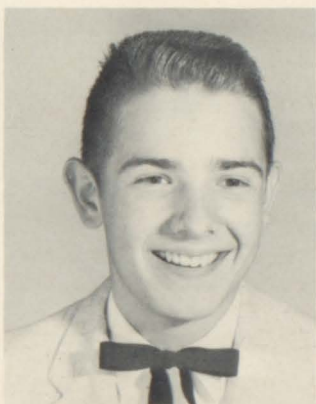
JUNIOR CLASS



President: Bill Horne
V. President: Robert Brown

Secretary: Wilma Hall
Treasurer: Emilie Alexander

JUNIOR CLASS OFFICERS



Beula Adkins
Bill Alexander

Bobby Allen
Emilie Alexander

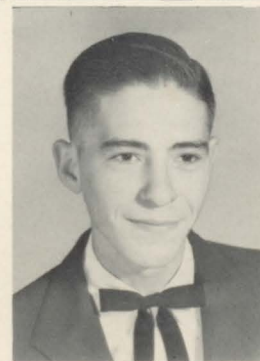
Shirley Allen
Donald Ballard



Larry Banks
 Joan Barnwell
 Roy Blankenship
 Priscilla Bradford
 Robert Brown



Barbara Burke
 Jerline Burleson
 Judith Byrd
 Patty Byrd
 Robert Byrd
 Claude Capps
 Earl Carver
 Fred Clark



JUNIORS



Jack Clark
Tom Clark
Donald Cooke
Linda Crawford
Linda Creasman
Arthur Cutshall
Bill Daugherty
Jo Ann De Hart



David Dillingham
Shirley Earley
Bruce Edwards
Bobby Fender
Helen Fields





Thomas Fortune
 Kathy Gafford
 Teddy Gill
 Dallas Gragg
 Wilma Hall



Carole Hamby
 Tony Hampton
 Vernon Hampton
 Lavita Hemphill
 Mary Frances Hendley
 Myrna Hensley
 Ruth Ann Holt
 Bill Horne



JUNIORS



Joyce Hutchins
 Jo Ann Jenkins
 Daphne Jolly
 Oscar Jones, Jr.
 Dana Kelly
 Barbara King
 Mack Kirkpatrick
 Janelle Ledbetter



Rachel Lovelace
 Jack Lunsford
 Marian Lyda
 Julain Marett
 Elaine Martin





Margaret Melton
 Charlene Meyer
 Mickey Miller
 Lloyd Moore
 Shirley Moore



Kenneth Morgan
 Barbara Morris
 Ronald Morris
 Charles Mumpower
 Gerald Mundy
 James Murphy
 Gwen McAfee
 Joan McCall



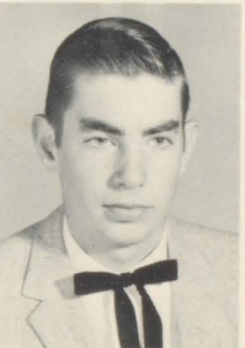
JUNIORS

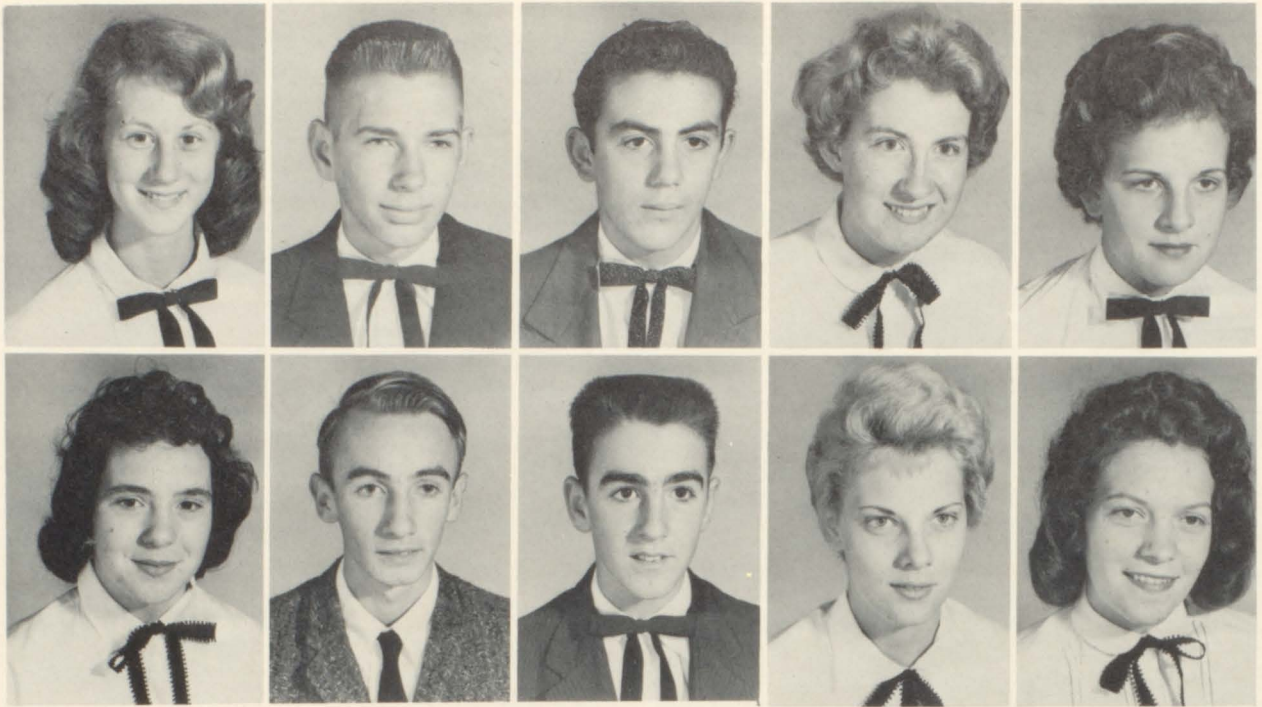


David McCuen
 Patricia McDaris
 Kenneth McElrath
 Peggy McElrath
 Patty McGrath
 Armilda McKinney
 Lewis McMahan
 Myra Nanney



Eloise Noah
 Charles Norman
 Shelby Ogle
 Douglas Owenby
 June Pate





Patricia Patton
 Meck Penley
 Patrick Peterson
 Betty Pollard
 Delores Pope



Alice Pressley
 Danny Pressley
 Carl Pullium
 Judy Quinn
 Madelyn Radford
 Josephine Rayburn
 Dorothy Redmon
 Barbara Reed



JUNIORS



Janice Reed
 Melvin Reece
 J. D. Roberts
 Jimmie Robertson
 Oletta Robinson
 Judy Shirlen
 Margaret Shore
 Rita Shook



Richard Simmons
 Lorraine Slagle
 Robert Slagle
 Douglas Smith
 Sherry Smith





Tommy Sobol
 Tim Spiro
 Wanda Spivey
 Mary Stockton
 Beth Summey

Toni Taylor
 Susan Thomas
 Jerry Tomlinson
 Jo Tomlinson
 Cecile Vaillancourt

Iris Vess
 Wanda Vess
 Doris Watkins
 Harriet Waters
 Alma Watson
 Luke Wood
 Marvin Wright
 Beverly Crump

Not Pictured

Elizabeth Allison
 Gail Hall
 Joyce McHone
 Andy Parker



SOPHOMORE CLASS



Pres: Jack Hughes
Vice Pres: Dennis Summerlin

Sec: Emese Soos
Treas: Bruce Clapp



Charles Aiken
Marie Allison

Carolyn Allen
Glenda Andrews

James Allen
Patricia Ball

Linda Allen
Ann Ballard

S
O
P
H
O
M
O
R
E
S



Johnny Ballew
Bruce Bartlett
Yvonne Balanger

Betty Banks
Donna Bass
Charles Blaine

John Banks
Clifford Beck
Brenda Bridges

Peggy Jo Banks
Ann Beddingfield
Tommy Bright

Stanley Brown
David Buckner
Wayne Burleson

Beverly Bryan
Doris Buckner
Malcombe Burnette

Carolyn Bryant
Johnny Buckner
Harold Byas

Vivian Buchanan
Janice Burch
Joyce Byrd

Clifford Buckner
Fred Burgin
Melvin Carpenter





Kathy Carroll
Lee Clapp
Linda Conner

Ronald Carson
Carolyn Clevenger
Jo Ann Cooper

LeRoy Carson
Jerry Cline
David Craig

Randell Champion
Sandra Cook
Judy Crowe

Bruce Clapp
Bill Connet
John Crump

Dorothy Davis
Robert Duncan
Betty Fortune

Wayne Dickens
Wayne Elliott
Brenda Garland

Ronald Dillingham
Harold Fender
Elaine Garris

Carolyn Dotson
Martha Ferguson
Harry Gibbs



1
9
5
9

S
O
P
H
O
M
O
R
E
S



Doris Gibson
Patsy Goodman
David Hall

Larry Gill
Dallas Gragg
James Hall

Nancy Gill
Leon Gregory
Loretta Hall

Ray Glass
Marie Halford
Mary Ham

Bud Haney
Scott Hensley
Jackie Hughes

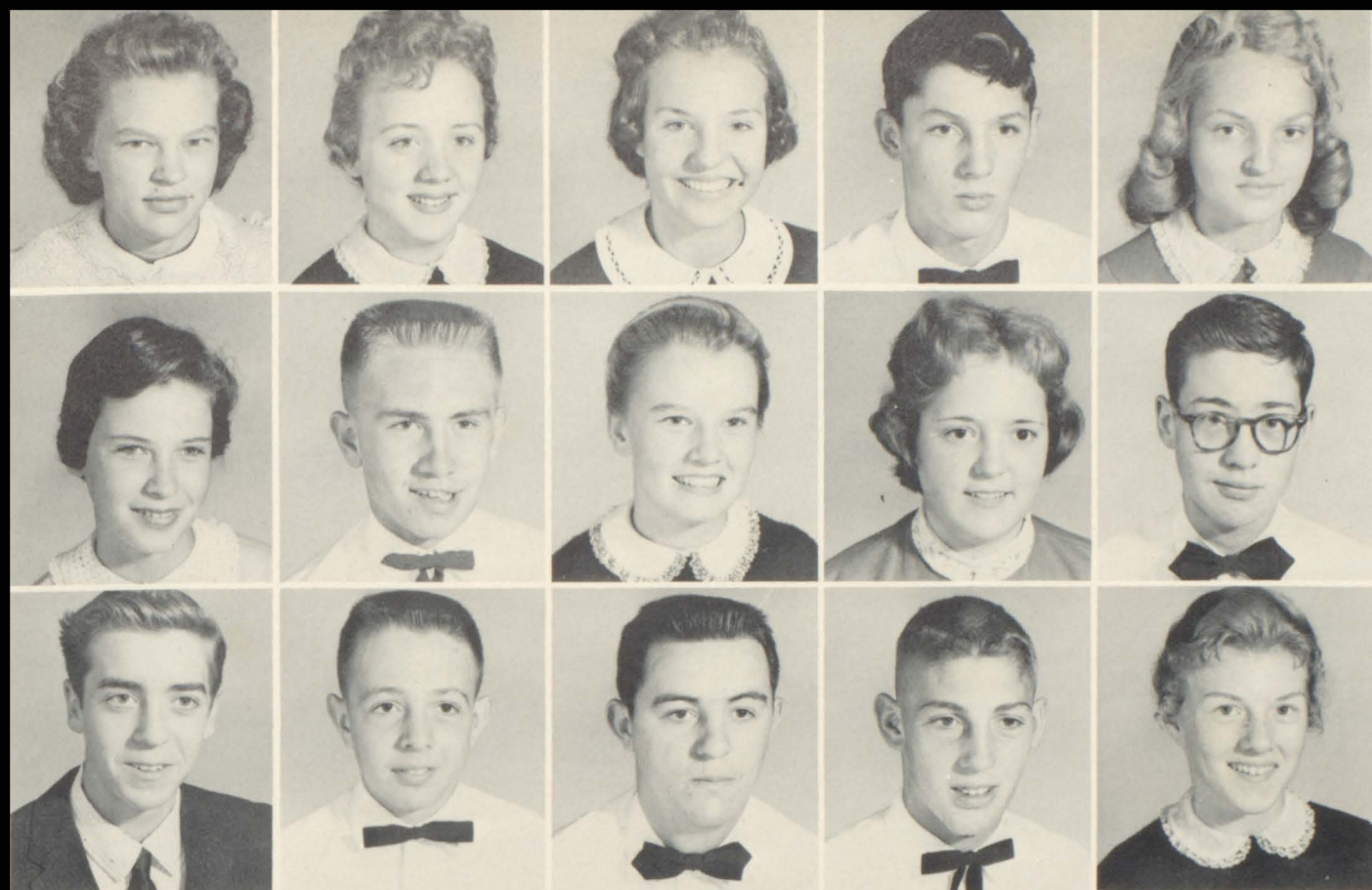
Kathrine Harris
Janice Higginbotham
Jackie Huscusson

Robert Harris
Jerry Hogan
Richard Isreal

Walter Harris
Barbara Hollifield
Reid Johnson

David Hensley
Charlotte Hudgens
Linda Jones





Geraldine Kilby
Joan Lemieux
William Lord

Pearl Kitchen
Howard Lewis
Robert Lowe

Margaret Ledbetter
Brenda Lindsay
Steve Luckadoo

Neil Ledbetter
Brenda Linens
Vance Lunsford

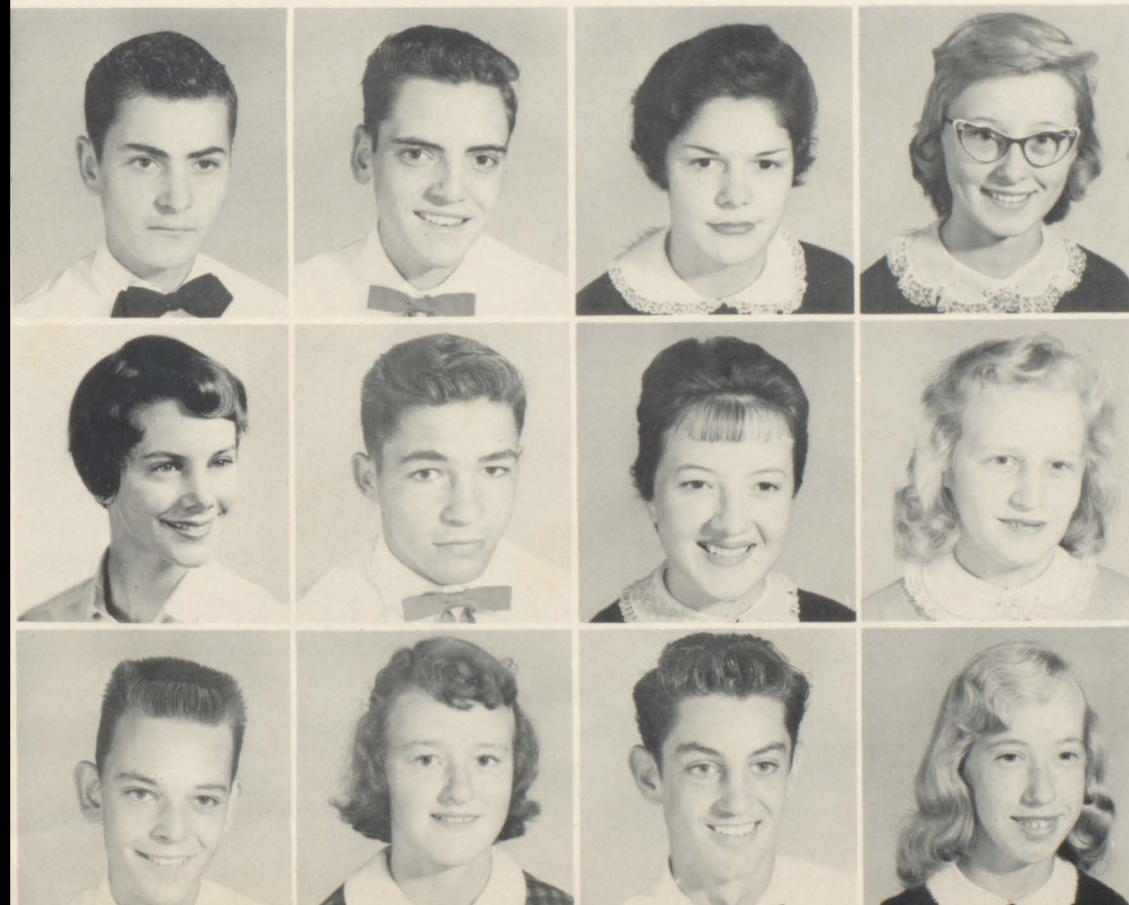
Patricia Lee
William Link
Wanda Lunsford

Jimmy Lytle
Padhee Massy
Ronald McMahan

Douglas Mahaffey
Johnny McCurry
Betty McPeters

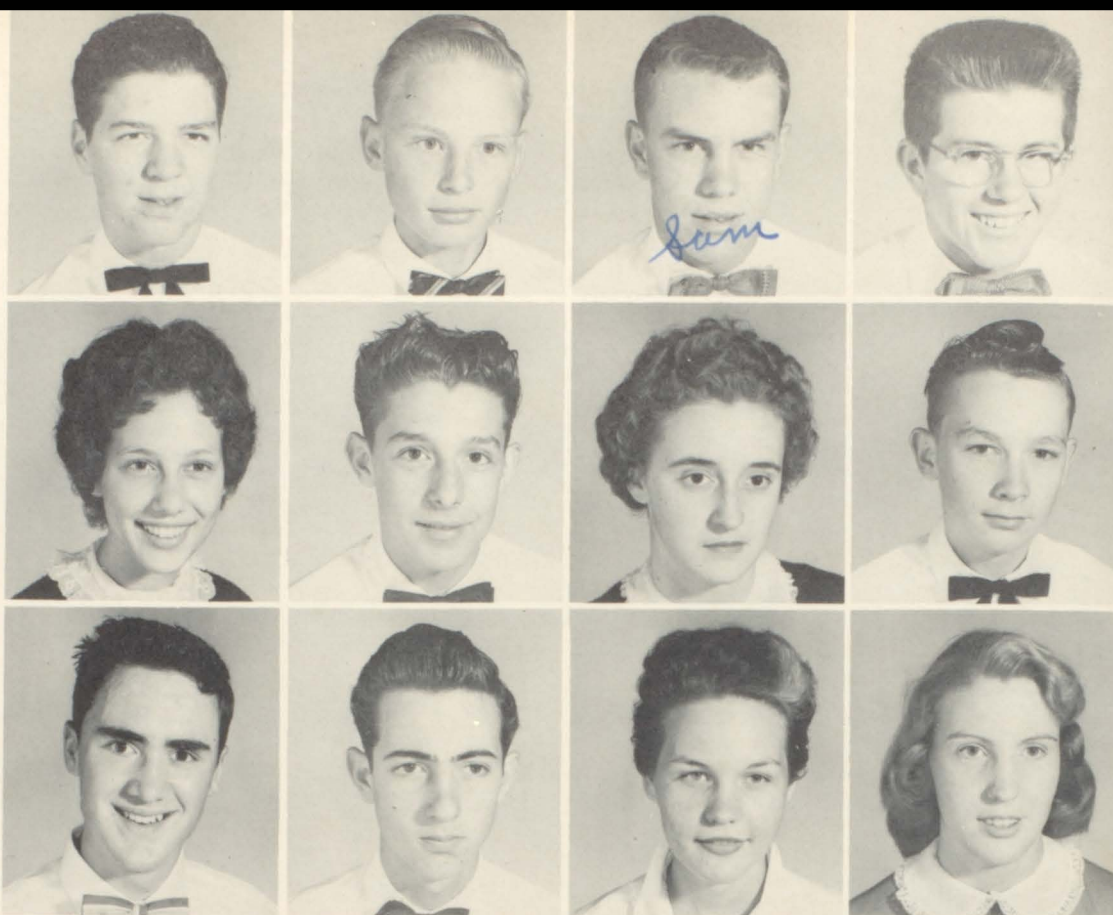
Judy Marett
Nancy McDaris
Donald Metcalf

Margaret Mashburn
Mary McKnight
Pauline Miller



1
9
5
9

S
O
P
H
O
M
O
R
E
S



Leonard Moore
Catherine Moyers
James Nevins

Jerry Morris
Carl Nanney
James Nichols

Sam Morris
Nellie Nelon
Mary Ruth Nix

Jerry Morrow
Marvin Nesbitt
Emogene Norman

Louise Norton
Frank Owensby
Helen Pegg

Shirley Ogle
Thomas Owensby
Joseph Penley

Stephen Oliveria
Irene Owensby
Sue Penley

Charles Owenby
Nellie Parton
Bob Peterson

Daniel Owenby
Ernest Payne
Linda Plemmons





Ronald Price
John Rayburn
Carroll Robinsor

Rita Putnam
Charles Rector
Elizabeth Robinson

Judy Raines
Carl Ricker
Fred Robinson

Martha Raines
Barbara Riddle
Blanche Roland

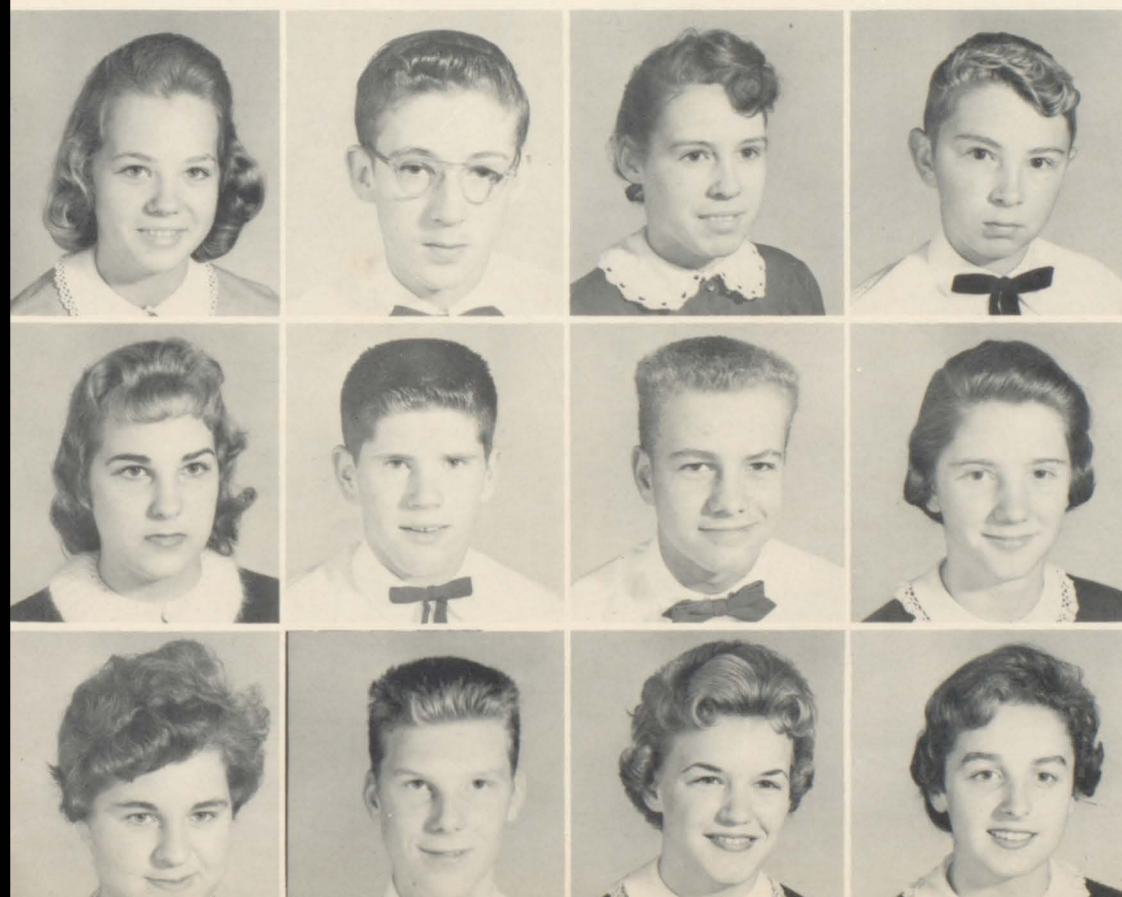
Nora Rankin
Frances Robertson
Shirley Self

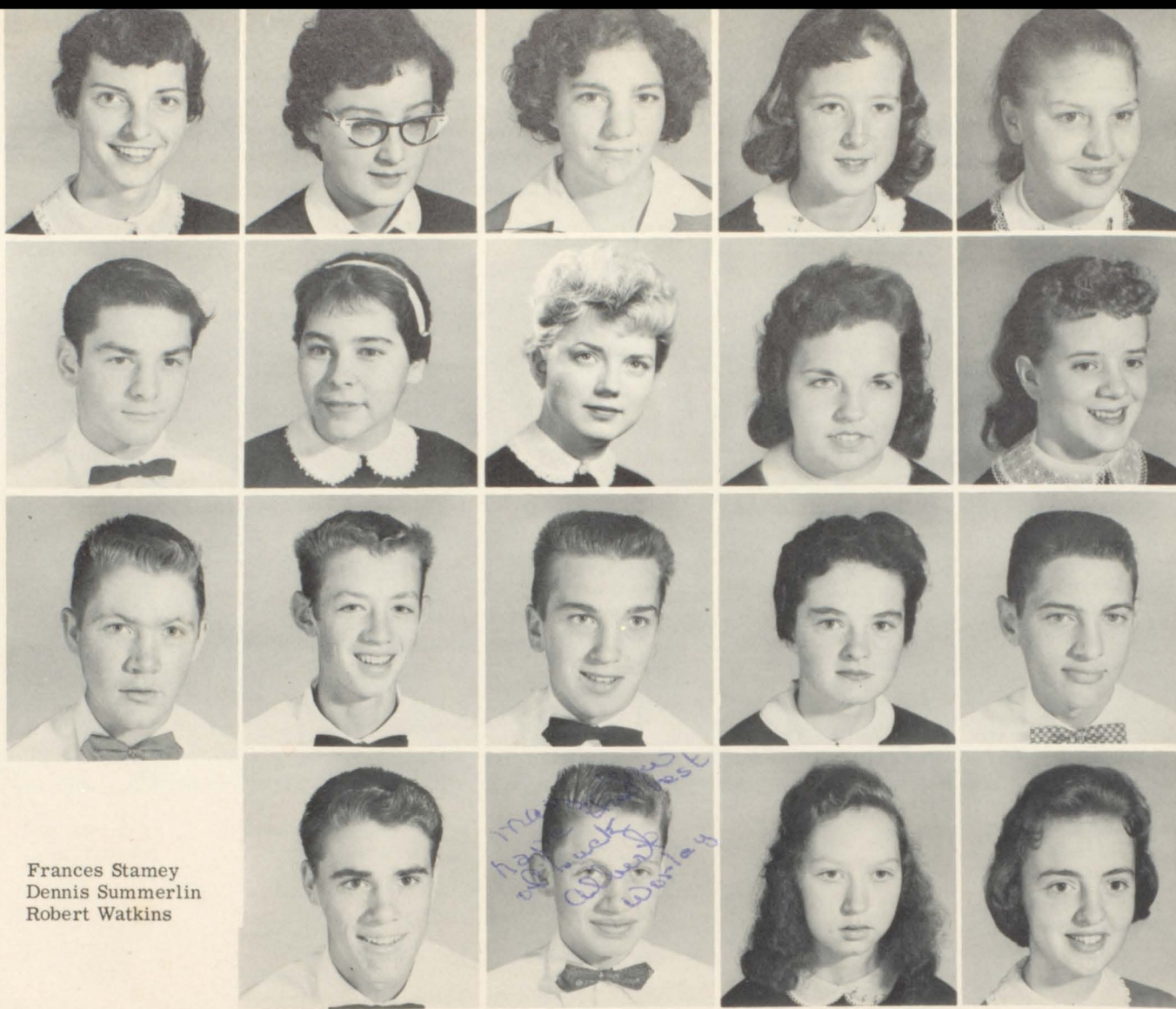
Betty Shepard
Karen Simons
Shirley Sparks

Fred Shook
Edwin Smith
Ben Spivey

Brenda Silver
Eugene Smith
Elaine Stafford

Troy Silver
Emese Soos
Regina Stafford





Frances Stamey
Dennis Summerlin
Robert Watkins

Vivian Stewart
Pattie Bird Talbot
Donald Waycaster
Coy Woody

Eloise Styles
Connie Taylor
David Whitaker
Albert Worley

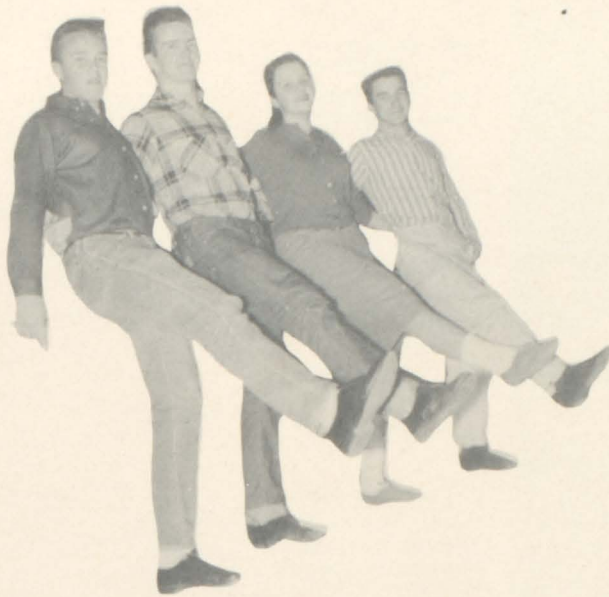
Joyce Swafford
Jean Tipton
Barbara White
Irene Worley

Marie Swann
Regina Troutman
Ned Willis
Cecelia Wyrick

Not Pictured

Ronald Bartlett
Wanda Burleson
Marchita Kelly
Earl Ledford

Tommy Nesbitt
Barry Sehion
James Stafford
Joseph Taylor



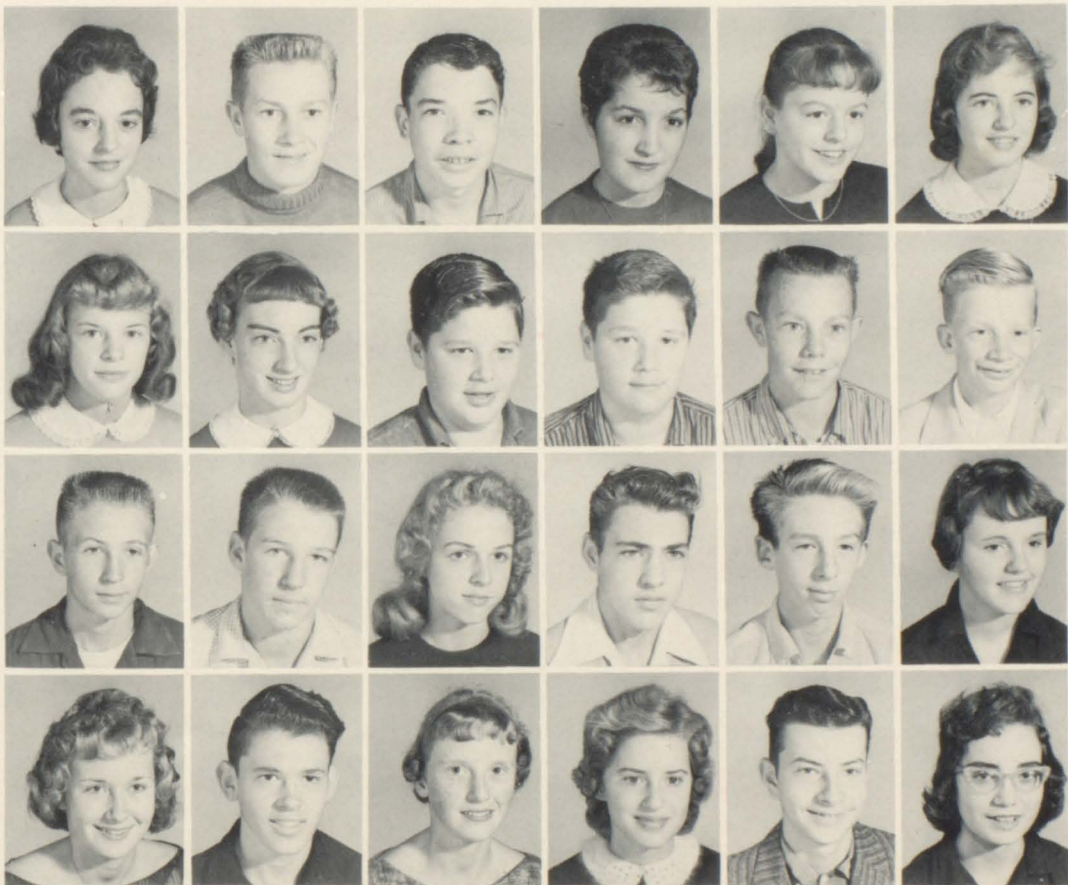
F
R
E
S
H
M
E
N

1
9
5
9

FRESHMAN OFFICERS

Pres: David Snypes
Vice Pres: Dean Brown

Sec: Kay Greene
Treas: Donald Harwood



Jean Aiken	Avery Allen	Emory Allen	Linda Allen	Wanda Allen	Betty Ammons
Joyce Ammons	Myra Armstrong	Bobby Babb	Ronnie Babb	Bobby Ball	Lester Ballew
Leon Banks	Ray Banks	Brenda Bartlett	Buster Bartlett	Gary Bartlett	Mary Bartlett
Betty Basnight	David Bashaw	Nellie Beck	Sue Bennett	Boyce Biddix	Barbara Bradley



Don Bradley
Helen Bradley
Stanford Brooks
Earl Brotherton



Lloyd Brown
Ronnie Brown
Tommy Brown
June Buckner



Houston Burleson
Bill Burkes
Bobby Burnette
Maurice Burnette



Talmage Burnette
Joyce Burrell
Linda Byas
Beverly Byrd

Robert Byrd
Cecil Caldwell
Clarence Chandler
Adelaide Clark
Helen Clark



Ruby Clark
Clarence Clough
Leonard Cole
Sammie Cole
Betty Creasman



Jean Creasman
Jimmy Creasman
James Dalton
Leon Dalton
Betty Davis



Jack Davis
Jackie Davis
J. R. Davis
Charlie Dodge
Betty Douthit



Martha Edmons
Jean Eller
Lois Elliot
Johnnie Ellis



Judy Evans
Mitchell Farr
Faye Fender
Margie Fields



Wesley Frady
Nelson Gaddy
Monroe Gilliam
Marsha Glenn



Kay Greene
Willie Green
Nancy Gregory
Ann Haney



Peggy Hamby
Marvin Harper
Jerry Harris
Margaret Harris
Judy Hensley



Carroll Hudgins
Billy Hutchins
Steve Hyder
Jackie Jarrett
Randy Kelly



Craven Kendall
Jimmy Kilpatrick
Morris King
Patricia Lawrence
Bobby Ledbetter



Larry Ledbetter
Bobby Lenord
Anita Luther
Linda Mahaffy
Mack Mason



Evelyn Massey
 Judy McAfee
 Margaret McAfee
 David McFee



Carol McKinney
 Hattie McKinney
 Wallace McKinney
 Pauline McMahan



Pauline McMahan
 Rosealee McMahan
 Junior Melton
 Johnny Metcalf



Melanie Meyer
 Margaret Mundy
 Ann Moore
 Billy Moore

Carolyn Moore
 Robert Moore
 Shirley Moore
 Tony Moore
 Ronnie Morrow



Freddie Moyers
 Barbara Munday
 Emily Murphy
 Don Myers
 Jerry Nanney



Libby Nanney
 Ted Nanney
 Shirley Nelson
 Arnold Nesbitt
 Gary Odenn



Betty Owensby
 Rex Padgett
 Barbara Page
 Bobby Parker
 Evelyn Parker



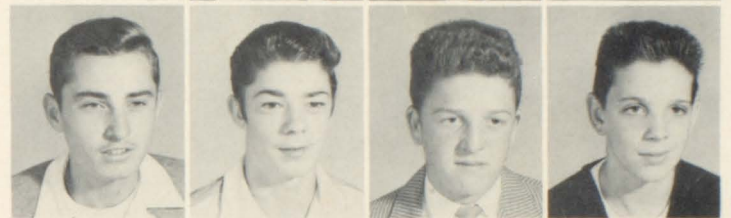
Janice Peek
 Brenda Penley
 George Penland
 Olivia Penland



Eugene Perry
 Mike Peterson
 Charlie Phelps
 Kathlene Phillips



Jimmy Dillingham
 Glenn Plemmons
 Larry Plemmons
 Debbis Pope



Ann Pressley
 David Pressley
 Bruce Price
 Firby Ray



Patty Rayfield
 Susan Reed
 Judy Reese
 Linda Reid
 Ronnie Reynolds



Ted Rhodes
 Margaret Rogers
 Carolyn Roland
 Toni Roland
 Gerald Roper



Carroll Russell
 Lewis Severson
 Jesse Sexton
 Barbara Sheehan
 Judy Silvers



Kermin Silvers
 Billy Slagle
 Jack Slaughter
 Judy Smith
 Julia Smith





Linda Smith
David Snypes
Barbara Solesbee
Gloria Spivey



Homer Stevens
Charles Stone
Nancy Strickland
Paul Stroup



Don Stubbs
Linda Surrett
Linda Lee Surrett
Butch Swafford



Betty Swearington
Sue Tatham
Preston Timmerman
Frances Thomas

Jimmy Trantham
Mary Lou Towe
Pat Vaillancourt
Brenda Vess
Faye Waddell



Eugene Waldrup
Charles Waters
Ray Watkins
Ronald Watkins
Harold Webb



William Webb
Shirley Williamson
Joan Wilson
Judy Wilson
Ronald Wilson

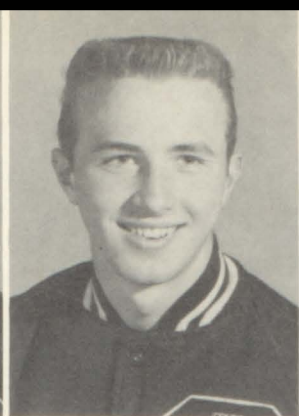


Virginia Wilson
Joan White
Kay Worley
Wesley Worley
Kay Wright





Athletics



Douglas Smith

Ray Glass

Lee Clapp



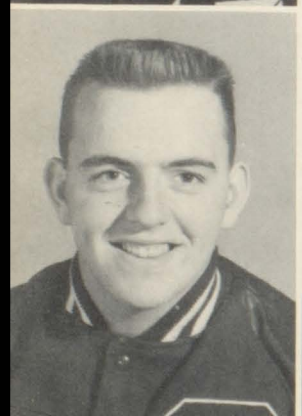
Donnie Ballard

Tony Hampton



Eddie Smith

Leroy Brown



Johnny Rayburn

J. D. Roberts

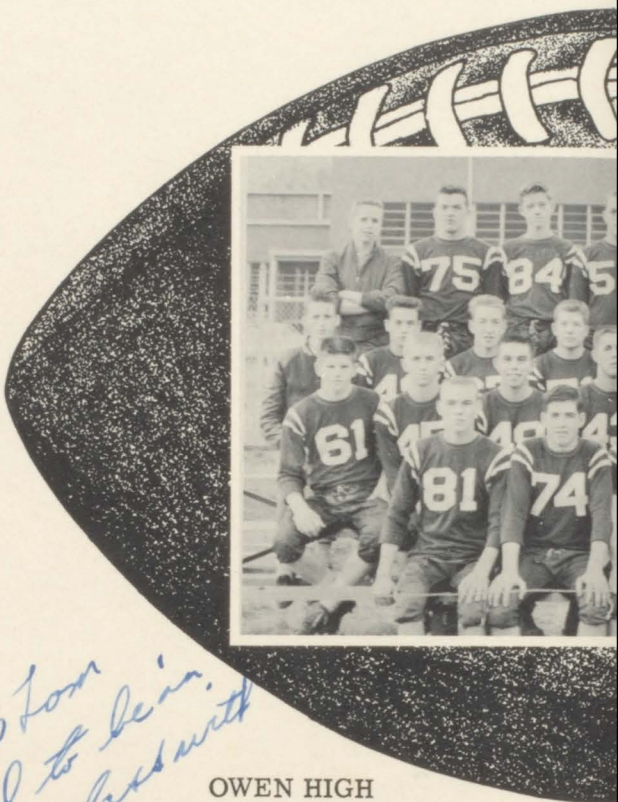
*Best of luck Tom
we're glad to be in
the same class with
you. Mark*

OWEN HIGH

Bobby Peterson

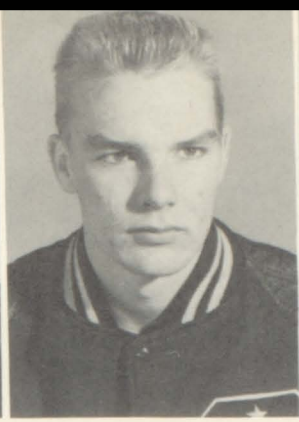
Bruce Edwards

Johnny Buckner

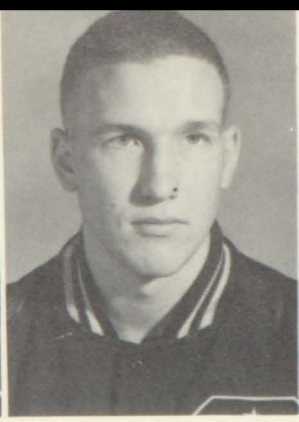




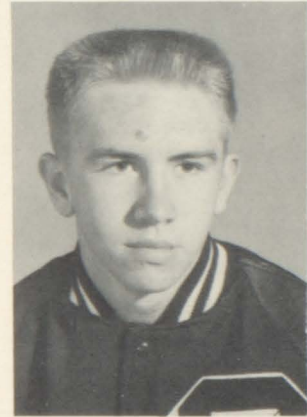
Jerry Tomlinson



Jackie Bennett



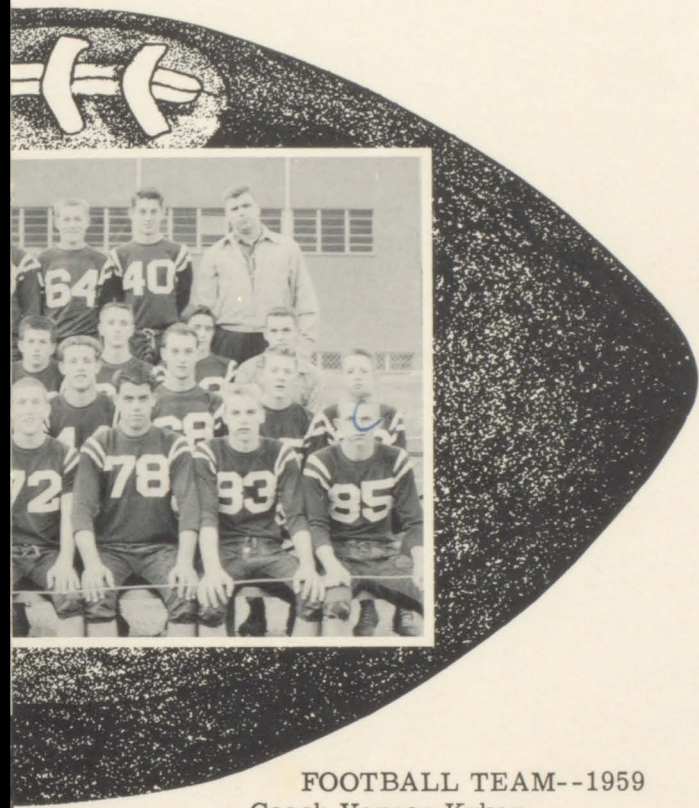
James Moyers



Howard Lewis



Fred Newton



FOOTBALL TEAM--1959
Coach Vernon Kyker



Jackie Hughes



Bill Alexander



John Woody

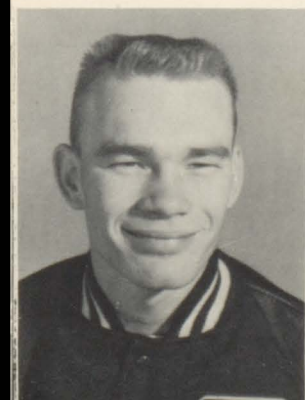


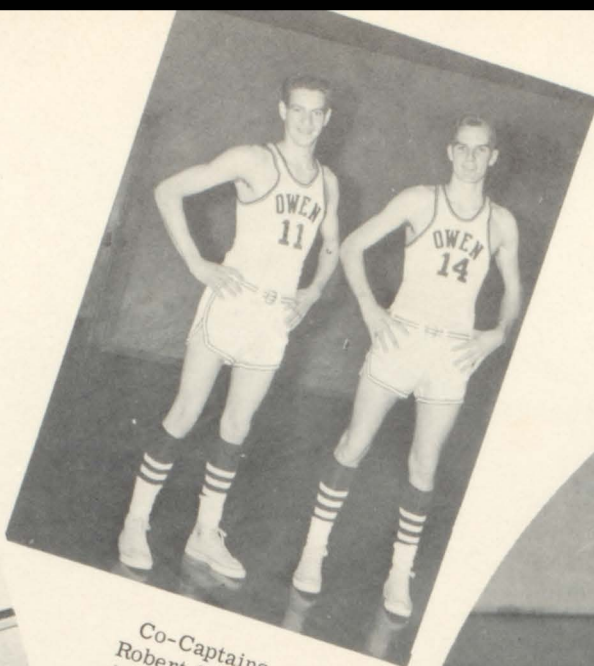
Wendell Runion

Al Ronquillo

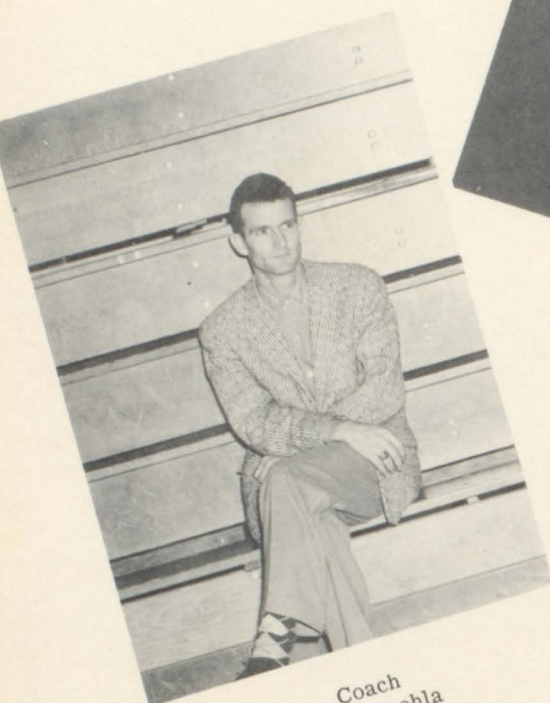
Joe Robinson

Kenneth McElrath

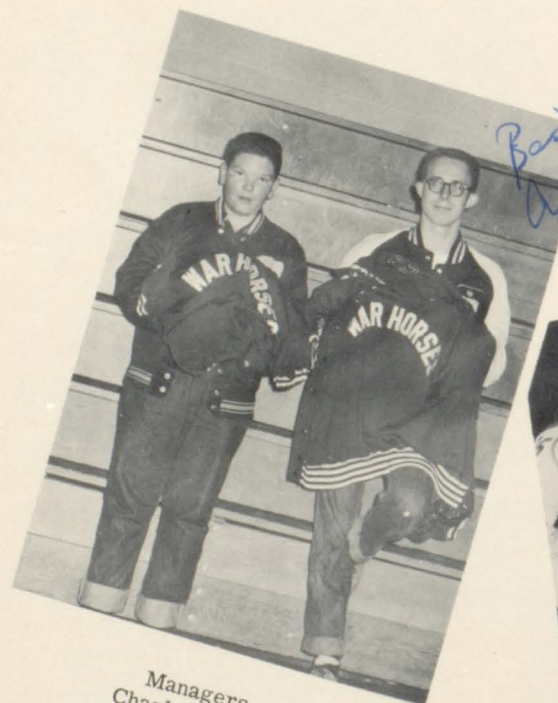




Co-Captains
Robert Sparks
Jackie Bennett



Coach
Ned Straehla



Managers
Charles Rector
Alan Taylor

*Best wishes
Alan*



"Hey, Hey, What d'ya say!"

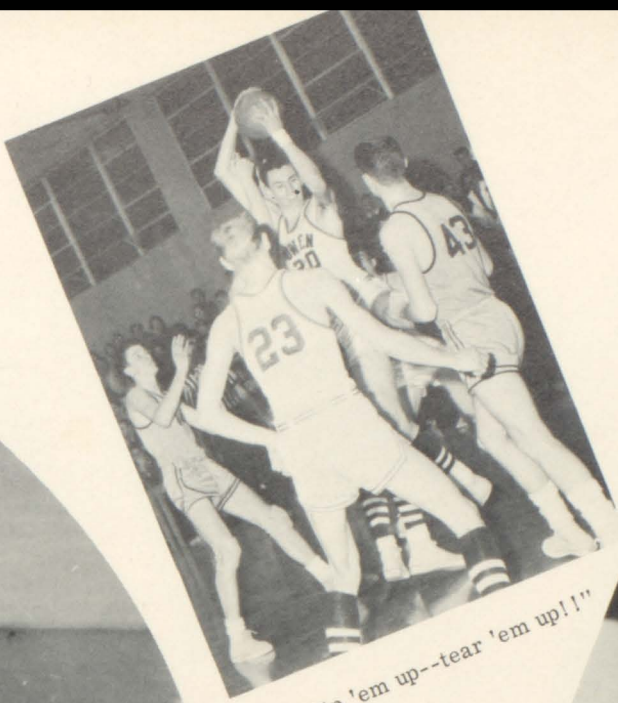
BASKETBALL

- Dec. 2 Waynesville
- Dec. 5 Reynolds
- Dec. 9 Valley Springs
- Dec. 12 Erwin
- Dec. 16 Leicester
- Dec. 18 North Buncombe
- Jan. 6 Brevard
- Jan. 9 Enka
- Jan. 13 Biltmore
- Jan. 20 Waynesville

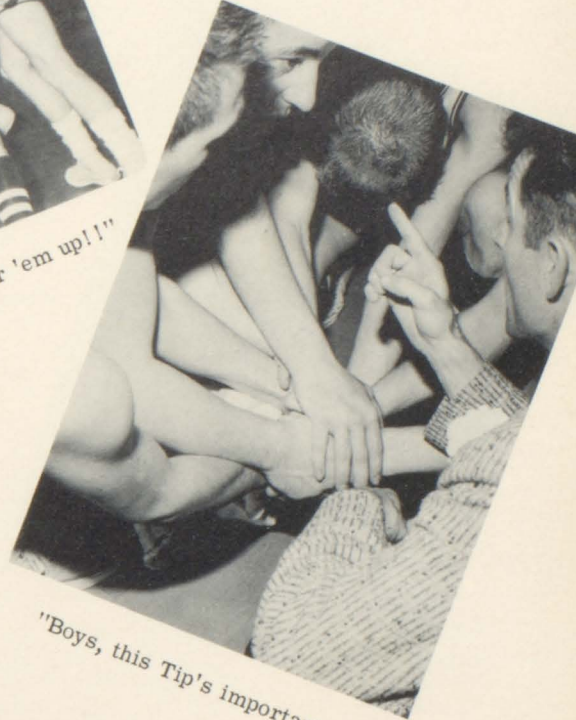
Feb. 16 Tournament Begins
1958-----

BASKETBALL

59



"Rip 'em up--tear 'em up!!"



"Boys, this Tip's important."



"... this is an honor ..."



"WE WON!"

SCHEDULE

Jan. 23	Reynolds
Jan. 24	North Buncombe
Jan. 27	Valley Springs
Jan. 30	Erwin
Feb. 3	Leicester
Feb. 5	Brevard
Feb. 10	Enka
Feb. 13	Biltmore

Feb. 21 Finals

---1959

CHEERLEADERS

Helene Nichols
Dianne Nesbitt, Pattie Talbot



Joan Connet, Co-Capt.
Pat Gill, Co-Capt.

They're full of personality and energy and
stuff,

And when they prance before us, we can't
yell loud enough,

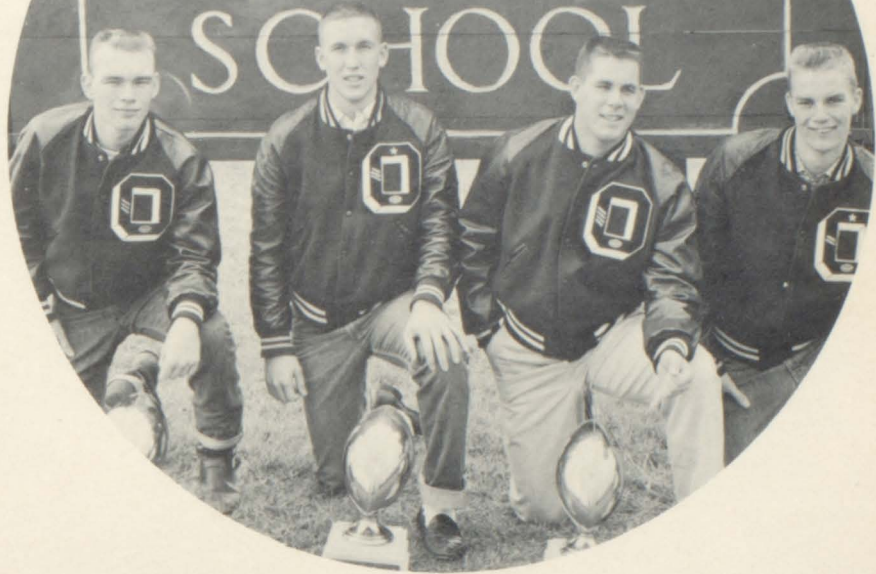
If ever we're losing and the situation's
dim,

We can count on our cheerleaders for an
extra dose of vim.

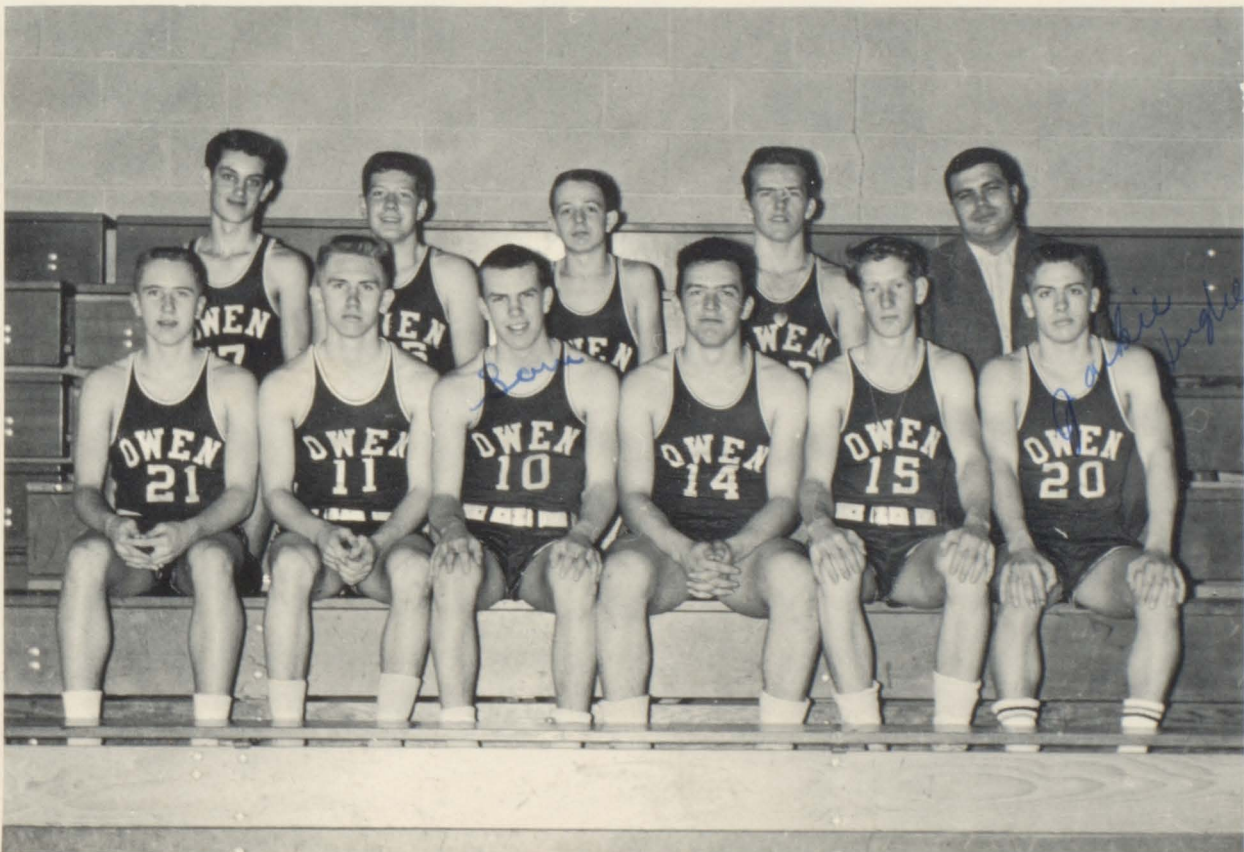


Barbara Gregory, Padhee Massy,
Betty Patton, Sue Smith, Lynn Gill

OWEN HIGH SCHOOL



JUNIOR VARSITY BASKETBALL



CHEERLEADERS

Helene Nichols
Dianne Nesbitt, Pattie Talbot



Joan Connet, Co-Capt.
Pat Gill, Co-Capt.

They're full of personality and energy and
stuff,

And when they prance before us, we can't
yell loud enough,

If ever we're losing and the situation's
dim,

We can count on our cheerleaders for an
extra dose of vim.

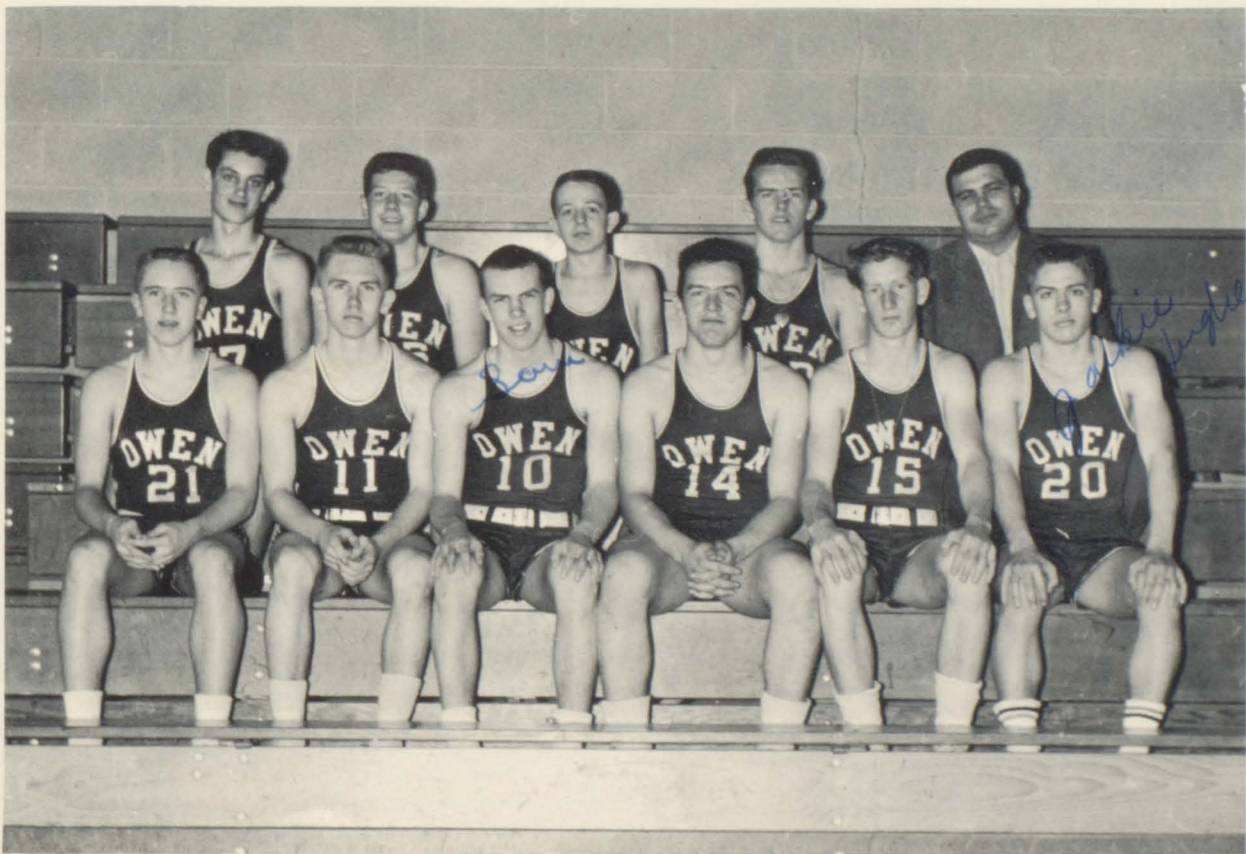


Barbara Gregory, Padhee Massy,
Betty Patton, Sue Smith, Lynn Gill

OWEN HIGH SCHOOL



JUNIOR VARSITY BASKETBALL



FALL



"KANGAROO COURT"

"LITTLE GEORGE"

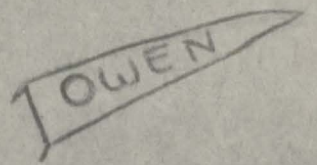


OWEN

"CHEESE"



"HOODS"



BATHING BEAUTY



WHOPEE!!

"ALL RIGHT BOYS AND GIRLS!"



"PAPA" BRIDGES



DUKE OR

YEA TEAM!





Activities



STUDENT COUNCIL

Chas. Smith, Sponsor

OFFICERS

Pres. - Joe Robinson
 V.-Pres. - Janelle Ledbetter
 Sec. - Joan Connett
 Treas. - Donna Bass

"Li'l Abner 'n Daisy Mae"



"Buy a Shirt--- Please!"





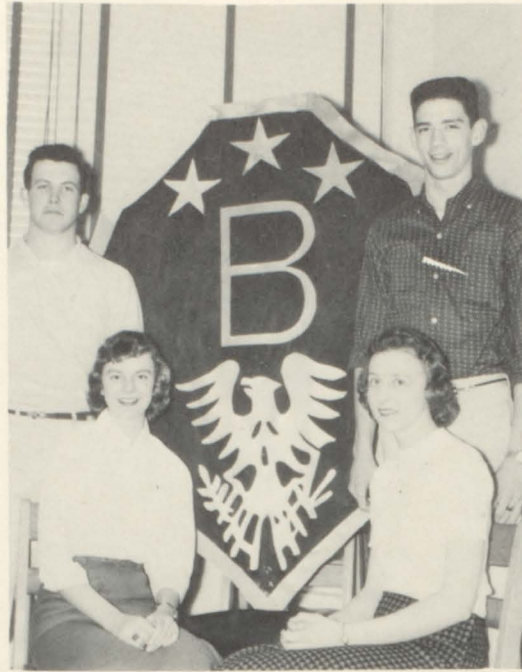
ANNUAL STAFF

Nancy DuPuy	Editor
Emilie Alexander	Asst. Editor
Ann Perry	Business Manager
Mrs. Eva Russell	Co-Sponsor
Mrs. Jo McCoy	Co-Sponsor
David DuPuy	Photographer
Barbara Ellis	Artist
Jim Page	Advertising Manager
Tommy Blizard	Advertising
Carolyn Hudson	Advertising
Mary Ann Ballard	Advertising
Eleen Sims	Advertising
George Talbot	Advertising
Carolyn Mills	Typist
Dorothy Lawrence	Typist
Gwynn McAfee	Advertising
James West	Advertising





Beta Sponsor
Mrs. Mary Leinster



B
E
T
A

C
L
U
B

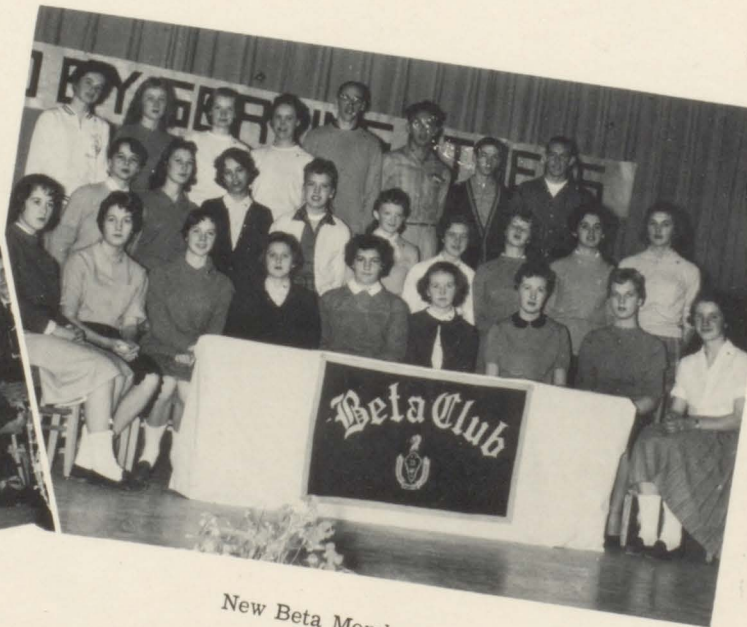
Beta Officers
Pres. - Dean Ledbetter
V.-Pres. - Nancy DuPuy
Treas. - Chas. Thompson
Sec. - Betty Shook



Project



Beta Members 1958-59



New Beta Members 1959

The Warhorse Weekly

more High School on Tuesday, March 4th.

The topic for discussion was program of school health.



Dear Dorothy Lawrence, Carolyn Mills
 How all of you going along? I still think about you a lot and wish I were still there with you.

The school is quite different here. That's why I am very fond of Owen. For one thing, you have plenty of school spirit and the right kind, too. Keep it up and who knows but you might sometime get that good sportsmanship merit. I hope so! Congratulations, boys, for winning the county championship.

May this be a good year for all of you students. Don't work too HARD!

As always, Carolyn Pressley
 P. S. Good luck to the Seniors!

Anyone wishing to write to Carolyn may do so by writing to:

Carolyn Baum,
 1223 Cassopolis,
 Elkhart, Indiana.



Beula Adkins, Mary Stockton
 The Warhorse Weekly

He is . . . a good hook-shot
 . . . a sophomore
 . . . 6'1" tall
 . . . a basketball player
 He likes . . . chicken
 . . . pink and red
 . . . sports
 . . . Wilma Hall.
 She has . . . brown hair
 . . . blue-grey eyes
 . . . a good personality
 . . . a sophomore
 . . . cute
 . . . 5'5" tall
 . . . a good student
 . . . a basketball player

She likes . . . blue



Asheville. Four members of the club urged us to further our educations and

SCHOOL PAPER STAFF
 Helene Nichols - Business Manager
 Anne Woodcock - Editor-in-Chief
 Mrs. Mary Leinster - Sponsor
 Becky McMahan, Asst. Editor

Each year members of the club come to our school to tell us of their citizenship program, then the school selects two good citizens of the senior class to attend a luncheon and compete for three \$500 scholarships. Good citizens are also selected from junior, sophomore, and freshmen classes.

We had another chapel program Tuesday which was conducted by the seniors. Each year they have come to school and have given New Testament readings to the seniors; this year they did more. Besides giving the seniors New Testament, they gave every other student one and provided Bibles for each teacher's room.

—June Pate

senior players: Nonie Greene, Elaine Basterache, Kaye Robinson, Ruth Clayton, Wanda Bartlett, Yvonne Arthur Clayton, and Jerry



Last year Ann Perry, Betty Jean Shook
 course, and made a worthwhile contribution. She has been asked to contribute again this year.

In about half a month if several people don't get sick, a lot of girls are going to be disappointed. The girls have requested that you start thinking what ailment you are going to have so that they can put their new-found knowledge into use.

WHAT IF:

Shirley were a whistle instead of a Bell?

Melvin were near instead of Farr?

Ted were a room instead of a Hall?

Joan were a runner instead of a Walker?

James were a midget instead of a Giant?

Phillip



Elizabeth Hall, Alma Watson



SPONSORS



OFFICERS



FUTURE HOMEMAKERS
OF AMERICA



COUNTY OFFICER

Sponsors: Mrs. Mavis Nesbitt
Mrs. Jackie Taylor
County Officer: Nancy DuPuy
Officers: Marlene Pyatte
Pattie Talbot
Judy Shirlen
Brenda Garland
Daphne Jolly
Sue Penley
Margaret Mashburn
Dianne Nesbitt



FUTURE
TEACHERS
OF
AMERICA



OFFICERS

Pres. - Anne Woodcock
V.-Pres. - Ann Perry

Sec. - Helene Nichols
Treas. - Carolyn Hudson

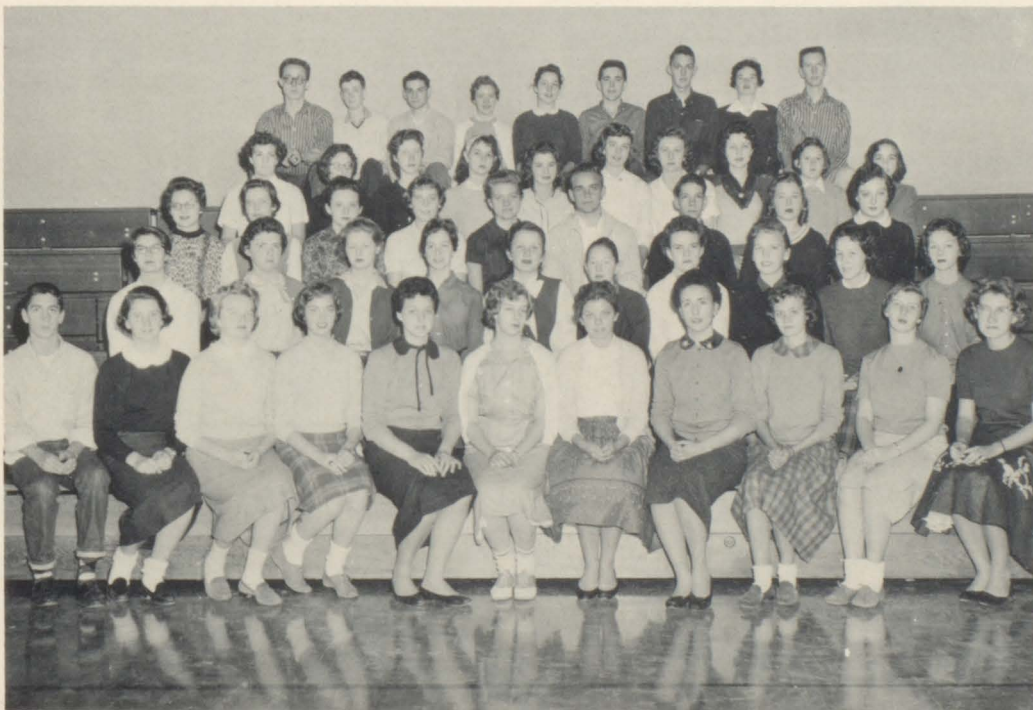
Sponsor - Nancy Wrenn

OFFICERS

Pres. - Dianne Nesbitt
V.-Pres. - Ronnie Morrow

Sec. - Emilie Alexander
Treas. - Emese Soos

Sponsor - Elizabeth Cole



LATIN
CLUB



EN FRANCAIS!



C'est la vie!



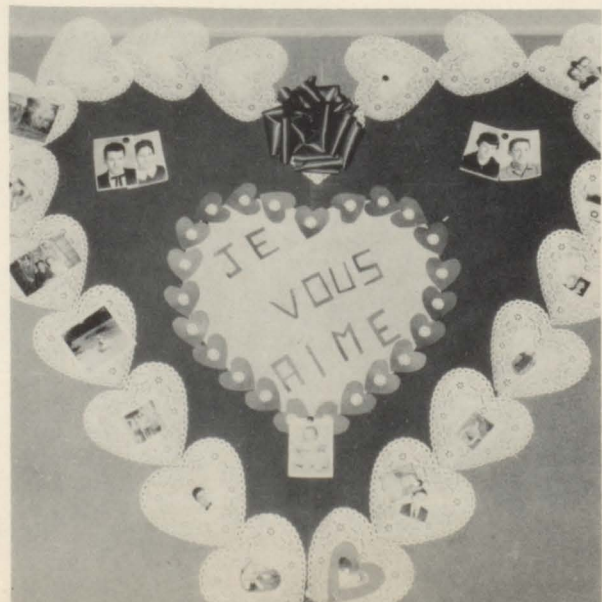
Je vous adore!

Il se fait tard. Au revoir.

Parlez-vous Francais?



Mrs. Mary Freeman, Sponsor





COMMERCIAL



OFFICERS

Pres. - Geneva Brotherton
 V.-Pres. - Mary A. Ballard
 Secs.
 Jeanette Burleson and Carolyn Stroud
 Sponsor - Mrs. Delight Weeman

FORESTRY CLUB

OFFICERS
 Pres. - Jim Page
 V.-Pres. - George Talbot
 Crew Chiefs
 Everett Kendall and Ted Ballard
 Sponsor - Selmar Neskaug

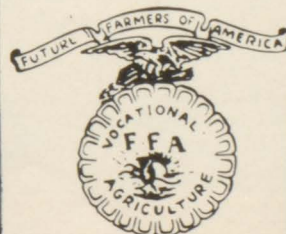


Sponsor: Selmar Neskaug

Sponsor: Gary Carson



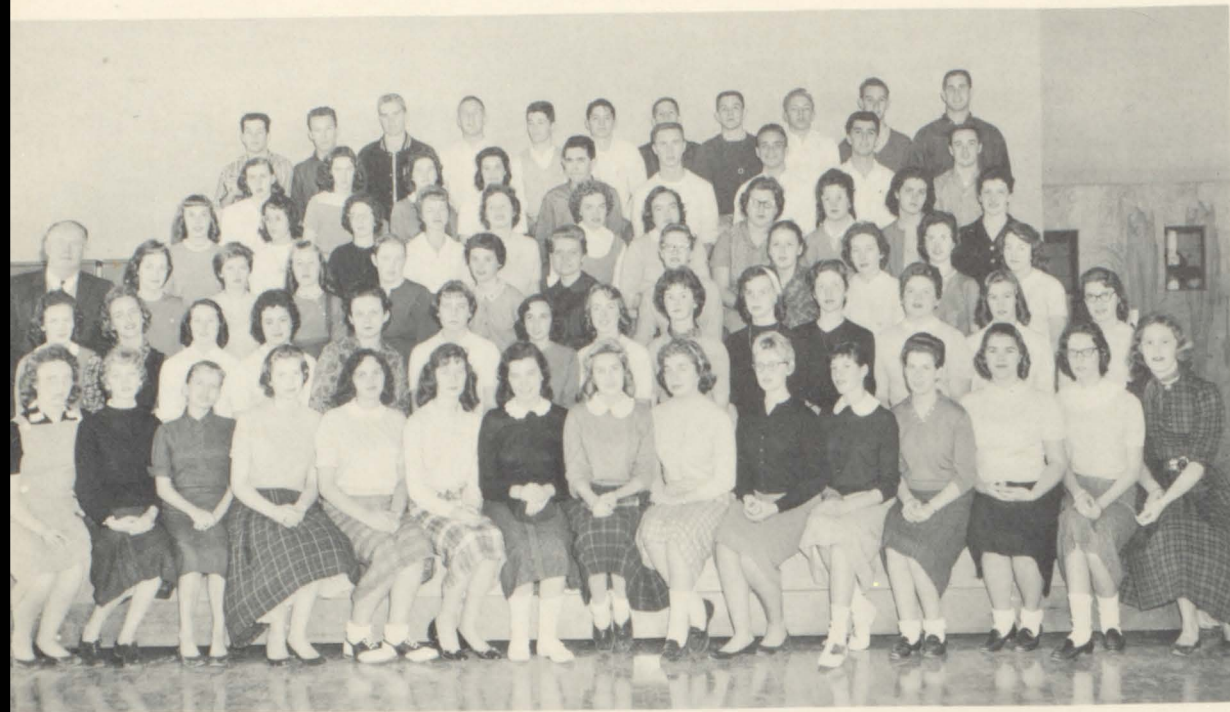
F. F. A.



S
E
N
I
O
R

B
I
B
L
E

C
L
U
B



OFFICERS

Pres. - Eleen Sims	Secretaries
V.-Pres. - Joe Robinson	Eliz. Hall, Betty Haynes
Sponsor - Chas. A. Smith	

OFFICERS

Pres. - Ruth Ann Holt	Secretaries
V.-Pres. - Alma Watson	Peggy McElrath, Lorraine Slagle

J
U
N
I
O
R

B
I
B
L
E

C
L
U
B





Woodfin Rhodes
Director



OCTETTE
Carol Morris, Vivian Mason, Elaine Stafford, Libbie
Vaught, Andy Stafford, Dallas Gragg, Chas. Rector,
Bill Morgan, Accomp. Betty Patton.



Pres., Eleen Sims; V.-Pres., James
Moyers; Sec.-Treas., Mary A. Bal-
lard; Librarians, Melanie Meyer &
Patty Rayfield; Asst. Accomp., Lib-
bie Vaught; Student Director, Bill
Morgan; Equip. Mgr., Andy Stafford.



OWEN HIGH SCHOOL CHORUS ~ 1959

DePuy



Drum Majorette
Mary Bannerman

MAJORETTES



MASCOTS
Connie Connor, Robbie Stubbs, Ann
Garner

Mary Bannerman, Judy Raines, Patsy Lee, Rita Putman, Gail Hall, Cecile Vaillancourt,
Brenda Lindsay, Linda Conner.



B
A
N
D



Woodfin Rhodes, Director



Solesbee, Bennett, Page, Noah

Boone, Aiken, Dickins, Stubbs, Ball, Severson, Cunningham, Crump, Stephenson, Blaine, Edwards.



Ronquillo, Moore, Fender, Nevins, Bashaw, Penley, Smith, Sexton (kneeling)

Clark, Evans, Blizard, Douthit, Thomas, Brown, Jarrett, Roland.



McKinney, Ellis, Gregory, Alexander, Blaine, Morgan.



I could, Too!



"SNOW BIRDS"

BEAUTY MAKE-UP!



BASKETBALL, ANYONE



WINTER



CHRISTMAS TEA



WAKE FOREST, WHERE WE ARE !!

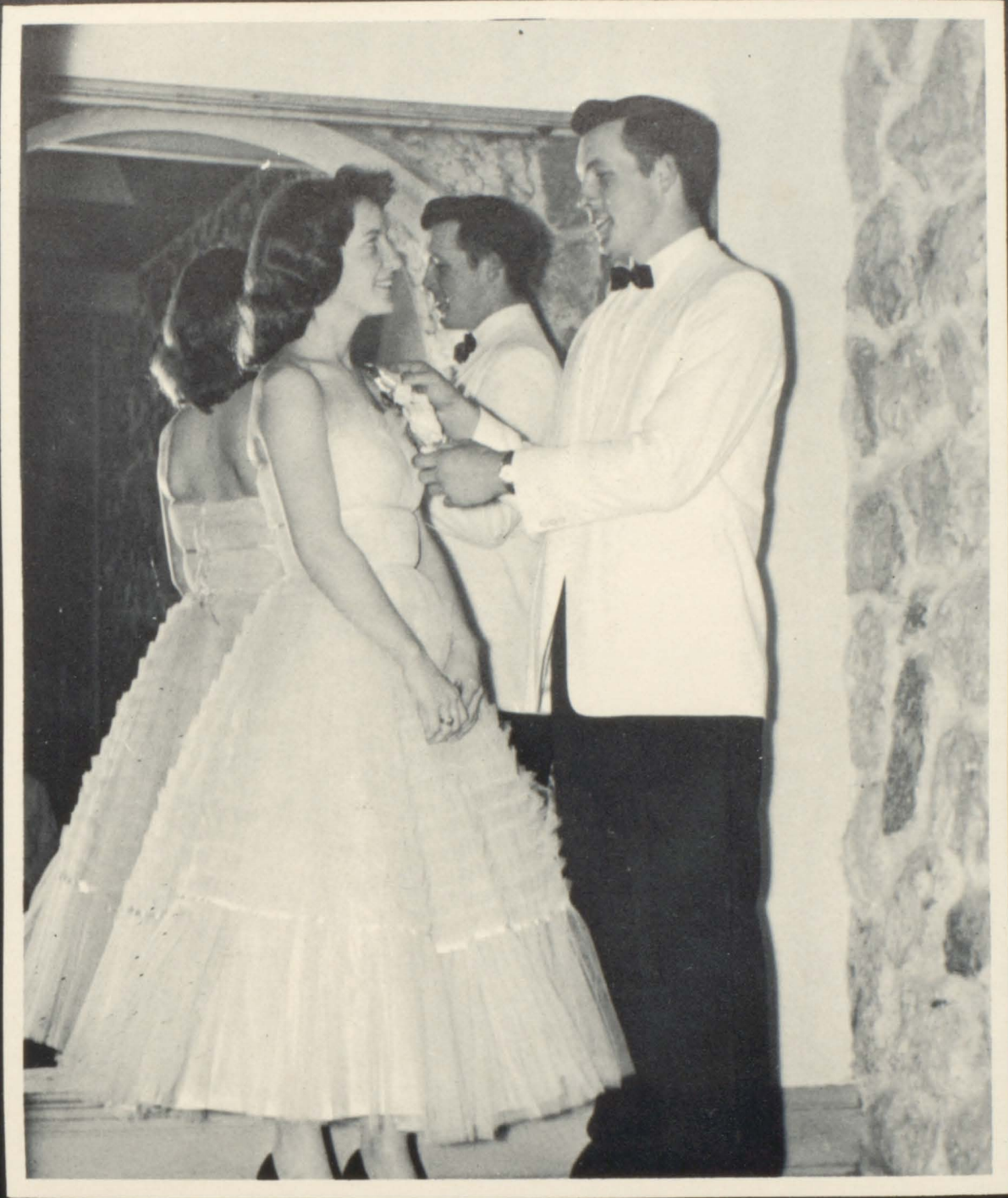


TEACHERS-TO-BE

ENGLISH SCHOLARS



P R E S T O



Features



May Queen

JEANETTE BURLESON



May Court

Front Row: Linda Connor, Mary Lou Towe, Sue Bennett, Beula Adkins, Joan Cornwall. Second Row: Alma Watson, Barbara White, Jannette Ledbetter. Top: Mary Bannerman.



HOMECOMING



PARADE





Sue Smith, Queen
James West, Escort



Brenda Lindsay
Bill Alexander



Betty Haynes
Dean Ledbetter



Peggy McElrath
Mack Kirkpatrick

HOMECOMING



Judy Raines
Ray Glass



Jackie Bennett crowns
Sue Smith Queen



Susan Thomas
Tommy Blizzard



Betty Patton
Tony Gardner

Gail Hall
Bill Horne



Mary Bannerman
Carroll Norwood



Eleen Sims
Tony Willis





Queen: Dianne Nesbitt
King: Robert Sparks

Maid of Honor: Libby Nanney
Crown Prince: Cecil Caldwell



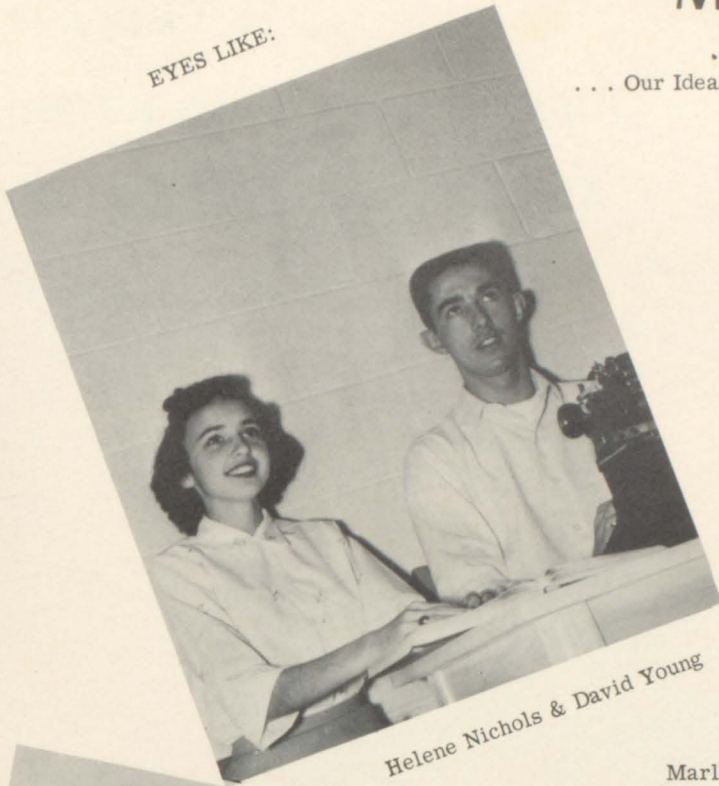
BASKETBALL COURT



Queen Dionne accepts her Bouquet from Prince Cecil as Judy Shirlen, Rita Shook, Pattie Talbot, Sue Smith, Mary Bannerman, Wilma Hall & Libby Nanney applaud.

MR. & MISS OWEN

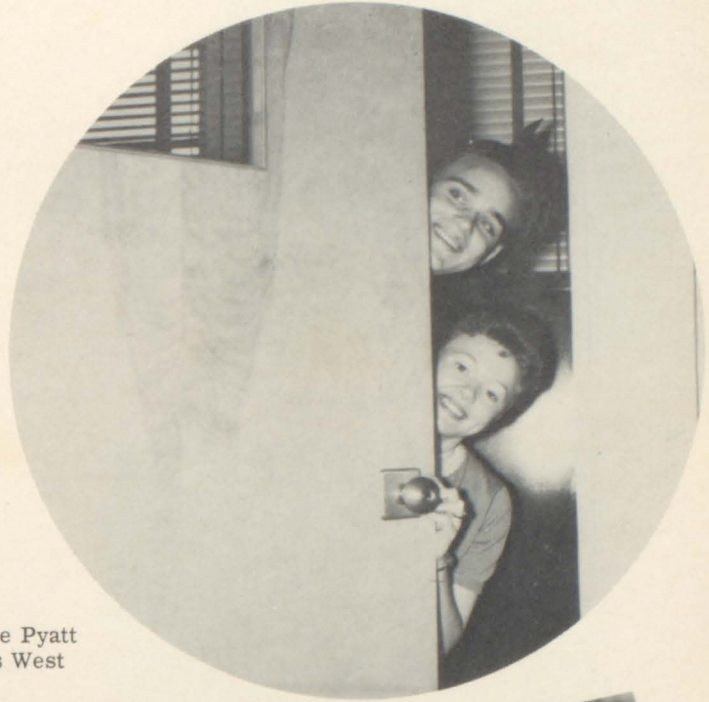
EYES LIKE:



Helene Nichols & David Young

... Our Ideal Would Have

SMILE LIKE:



Marlene Pyatt
James West



FIGURE & PHYSIQUE LIKE:
Ruth Hollifield & James Moyers

HAIR LIKE:



HANDS LIKE:
Carolyn Hudson & Tommy Blizzard



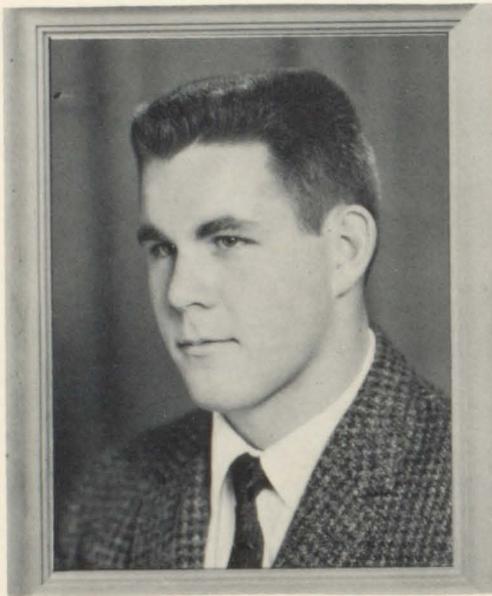
Linda Huneycutt

Joe Blankenship

HALL OF
For Outstanding Contributions
Through Music, Athletics
And



ANNE WOODCOCK



JOE ROBINSON



NANCY DUPUY

JOAN CONNET

DAVID DUPUY

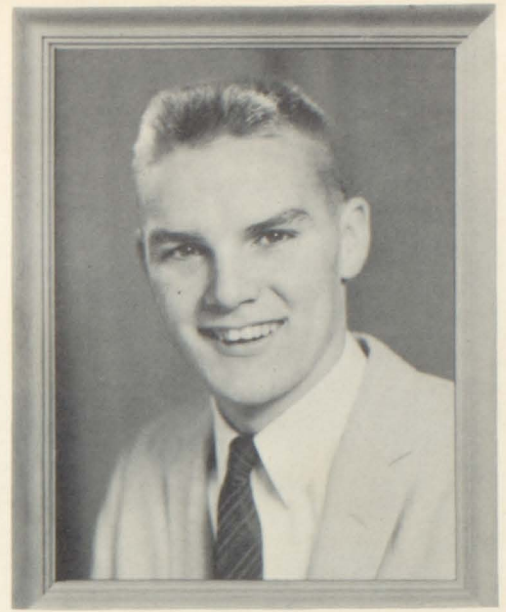


FAME

To School And Community

Leadership, Loyalty

Scholarship



JACKIE BENNETT



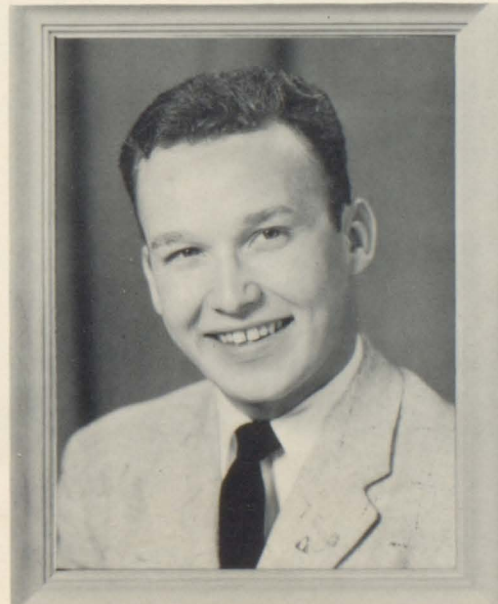
DEAN LEDBETTER



BETTY PATTON

DIANNE NESBITT

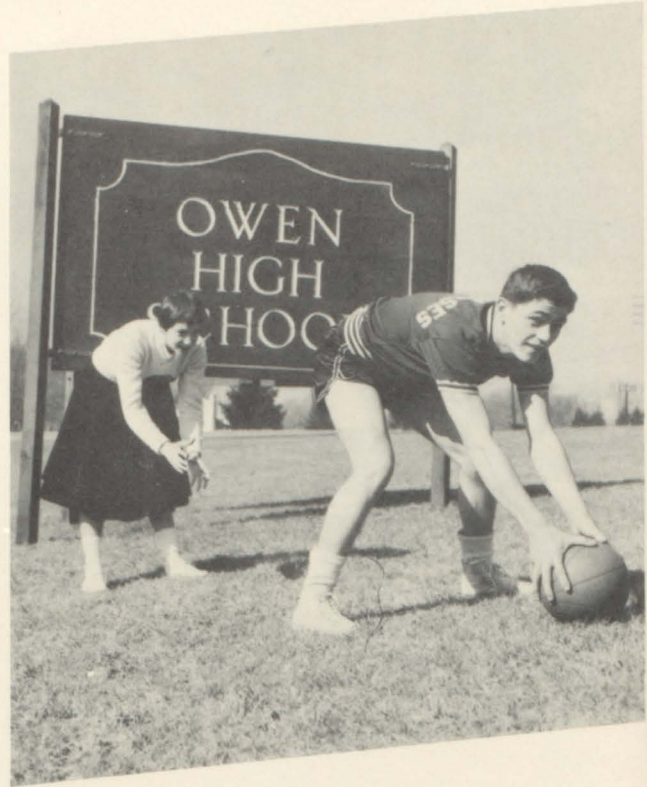
BILL MORGAN



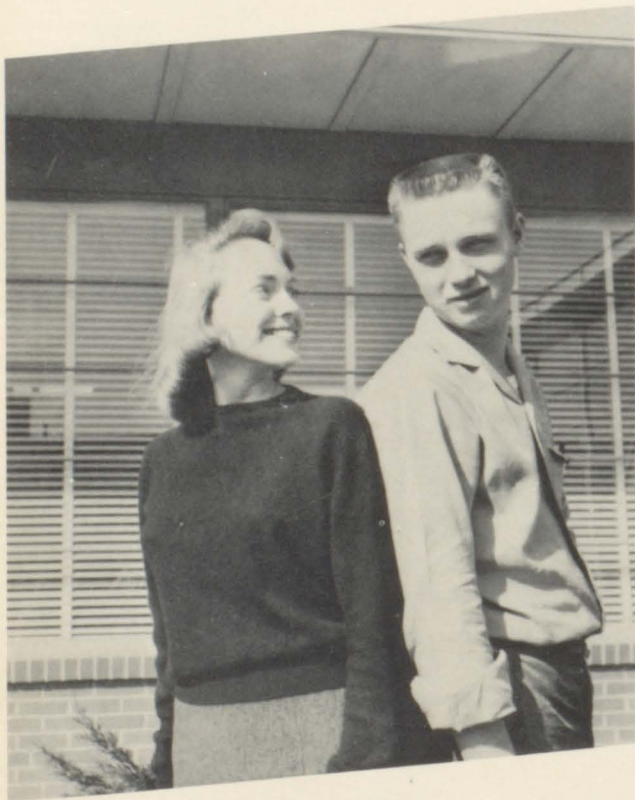
OWEN HIGH



MOST COURTEOUS
Mary A. Ballard & Tony Willis



BEST SCHOOL SPIRIT
Pat Gill & Jerry Bridges



PERSONALITY PLUS
Mary Bannerman & Jim Page



FRIENDLIEST
Sue Smith & Albert Padgett

SUPERLATIVES



MOST TALENTED
Carroll Norwood & Barbara Ellis



MOST DEPENDABLE
Betty J. Shook & Chas. Thompson



WITTIEST
Revonda Griffin & Chas. McPeters

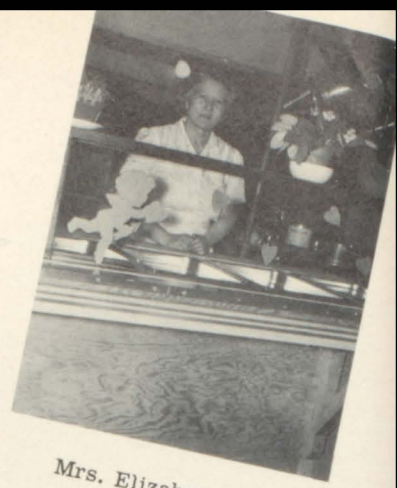


CUTEST
Eleen Sims & Stanley Moore



LUNCH ROOM STAFF

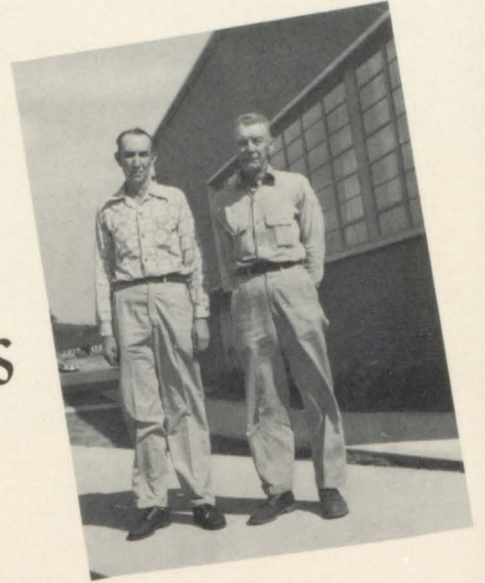
Mrs. Taylor, Mrs. Searcy, Mrs. Creasman, Mrs. Vess, Mrs. Tatham,
Mrs. Turner, and Mrs. Deal.



Mrs. Elizabeth Deal
Manager

CUSTODIANS

Mr. Dotson
Mr. Creasman



BUS DRIVERS



Horne, Moyers, Fender, Miller, Woody, Padgett, Page, Duncan, Talbot, DuPuy, McPeeters, and Willis

Junior and Senior Bliss ---



Ladies and Gentlemen...



SPRING

The Long Walk ---



"Minnie Pearl"



Happy Birthday



"Sluggers"



"MAY DAY"

"Flying Angel"



Whee!!!

Slam--Bam



"K4maz"



CROP OF '41 CLASS OF '59



Joan Connet



Helene Nichols



Carroll Norwood



Tommy Wagner



Joyce Martin



Harry Nanney



Elizabeth Vaught



Donald Surret



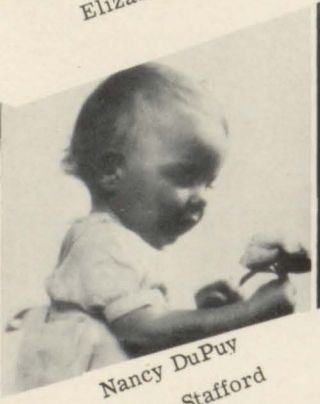
Dorothy Lawrence



Geneva Brotherton



David DuPuy
Eleen Sims



Nancy DuPuy
Carole Stafford



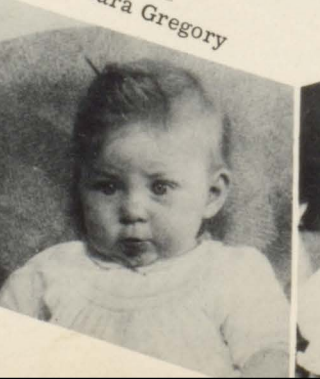
James West
Barbara Gregory



Joe Robinson
Susanne Wilson



Carolyn Mills
Anne Woodcock

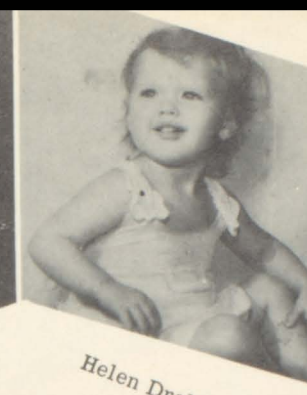




Carol Morris



John Bryant



Helen Drake



Fred Reed



Lynda Huneycutt



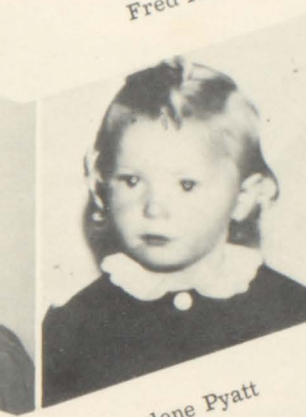
Becky McMahan



Pat Gill



Norma Stephenson



Marlene Pyatt



Betty Patton



Lynn Gill



Al Ronquillo



Tony Willis



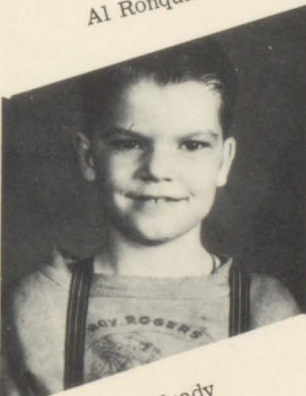
Mary A. Ballard



Ronnie Hall



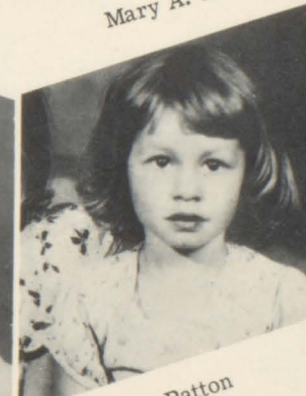
Chas. McPeeters
Tony Gardner



Ashley Frady
George Talbot



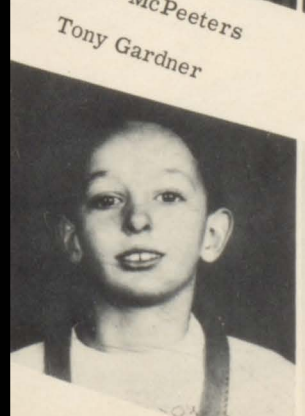
Joanne Cornwell
Albert Padgett



Judy Patton
Diane Miller



Jean Waycaster
Revonda Griffin





James Moyers



David Lovelace



Louise Burch



Bobby Ledbetter



Bill Morgan



Anne Robinson



Joyce A. Martin



Ann Perry



Bonita Howell



Betty J. Shook



Dianne Nesbitt



Pat Wimberly



Roy Kilby



Loretta Brooks



Carol Watkins



David Burgess
Ervin Sneed



Johnnie Runion
Jack Leatherwood



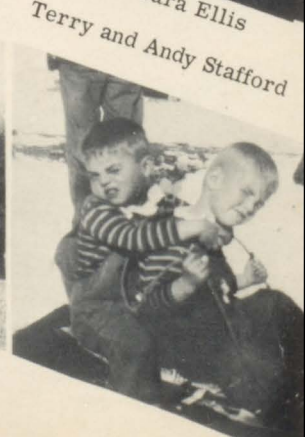
Mary Bannerman
Alan Taylor



Betty Haynes
Patsy Bridges



Barbara Ellis
Terry and Andy Stafford





Everett Kendall



Richard Hamilton



Sue Smith



Larry Atkins



Jewell Stroud



Leah McKinney



Carolyn Stroud



Jackie Bennett



Edward Payne



Teddy Ballard



Margaret Hudgins



Barbara Norman



Stanley Moore



Delores Melton



Dean Banks



Vivian Mason



Ruth Hollifield



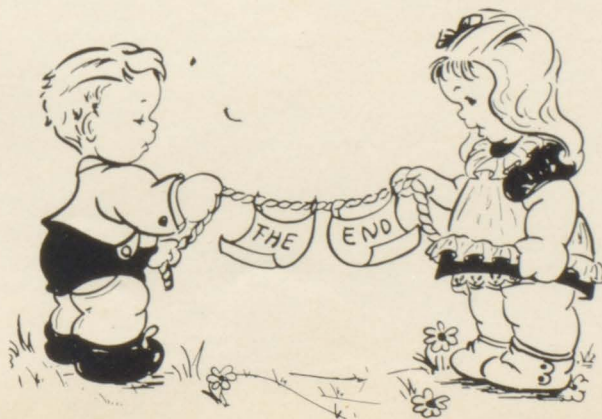
Esther Farr



Gail Clark



Carolyn Hudson





"Promenade"



Ouch!!



"Jakes"

"Cats"
Two of a Kind!



SUMMER



"Pajama Game"

"Duelle about a Kiss?"



Yea!! Rebels!!



Posin'...



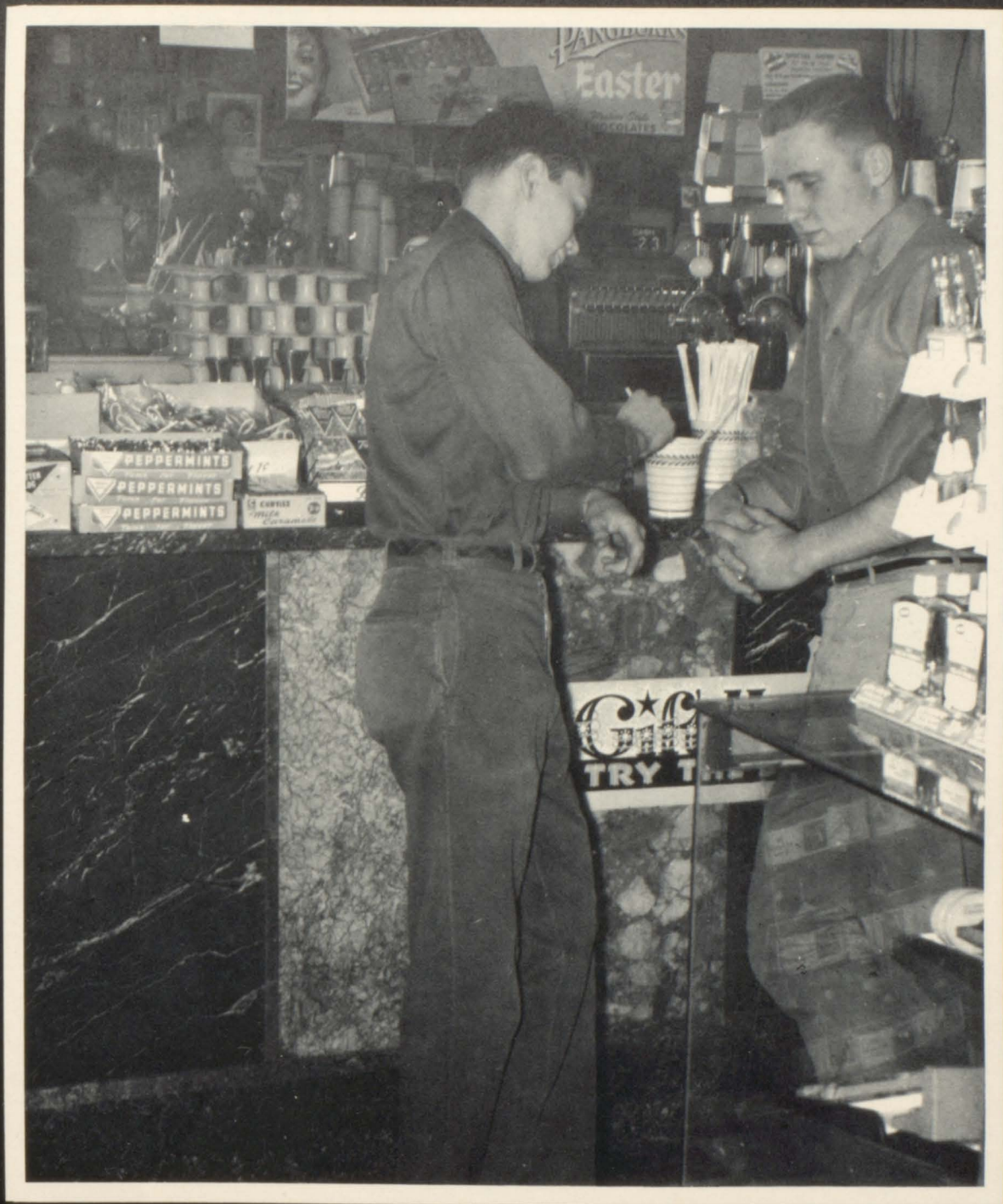
Naughty Again!

Friends --- Romans ---
Countrymen



Crunch!
Crunch!





Advertising

BEACON MANUFACTURING COMPANY



Phone: NO 9-8421

Swannanoa, North Carolina

CARMICHAEL & COMPANY

Wholesale Distributors
Fred H. Carmichael Pres.
T. E. McCall, Treas.

Al 2-7153
Southside Avenue
Asheville, North Carolina

Compliments of

ASHEVILLE PACKING CO.

Asheville Packing Company
Wholesale Meats

Phone: Al 2-3891
P. O. Box 8008
Asheville, North Carolina

KEY CITY LAUNDRY AND QUALITY DRY CLEANING

MEMBER



THE BEST IN WASHABLES
AND LAUNDRY SERVICE

Complete Laundry and Dry
Cleaning Service
Laundry Phone: NO 9-8311
Cleaners Phone: No 9-4881
110 Black Mountain Avenue
Cherry Street
Black Mountain, North Carolina

KEY CITY PHARMACY



Phone NO 9-5231
204 Sutton Avenue
Black Mountain, North Carolina

Compliments of

EARLEY'S DRIVE-IN CLEANERS

"If your cleaning problems have
you seeing red - - Call
Earley's instead - - -
Phone NO 9-7313
Black Mountain, North Carolina

SARAH LEES

latest fashions

Women's Apparel
Phone NO 9-8473
106 State Street
Black Mountain, North Carolina

Compliments of

JAY'S DAIRY BAR



Phone NO 9-7843
State Street
Black Mountain, North Carolina

LANCE'S ESSO SERVICE

Tires, Tubes, and Batteries
Phone NO 9-9238
Montreat Road
Black Mountain, North Carolina

Compliments of



Phone NO 9-5671
118 Broadway
Black Mountain, North Carolina

WOODCOCK MOTOR CO.



Phone NO 9-3771
106 Sutton Avenue
Black Mountain, North Carolina

GUDGER'S TRANSFER

Phone NO 9-5201
Box 757
100 Sutton Street
Black Mountain, North Carolina

HARRISON FUNERAL HOME

Phone: NO 9-7722
State Street



Black Mountain, North Carolina



"We did it 'n we're glad!"

R.C. BOWNESS, BUILDER



Phone: No 9-8210, Box 1068
Black Mountain, North Carolina

SWANNANOA BANK AND TRUST CO.

Congratulations and Best Wishes to the Seniors of 1959



Phone: NO 9-8214
Swannanoa, North Carolina

CITY RADIO & T.V. SERVICE

Authorized Motorola Dealer
Elmer Dees - - Owner
Phone: NO 9-8665
Black Mountain, North Carolina



"Does anyone know who this
Picture is?"



"Since when were you
interested in photography"?

Compliments of the grocers of
this area who sell

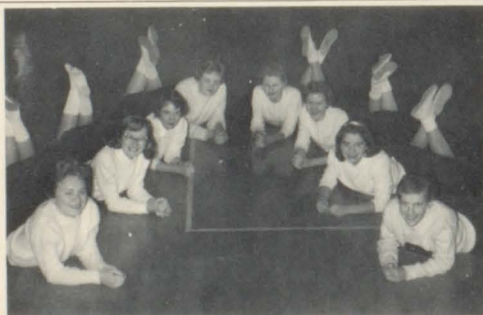
BOST'S BREAD AND BOST'S FRESH CAKES

FARMERS FEDERATION COOPERATIVE

Processors of
Fresh or Frozen Fryers
Fowl and Turkeys
Choice Cuts of Institution &
Retail Parts
Frozen Foods-Shell Egg-Country Hams
Phone: AL 2-7361
189 Valley Street
Asheville, North Carolina

PEARCE YOUNG ANGEL CO.

Wholesale Foods
Fresh-Dried-Canned-Frozen
Phone AL 2-6752
109 Roberts Street
Asheville, North Carolina



Jr. Varsity Cheerleaders

Compliments of

INSTITUTION WHOLESALE CO.

Phone: AL 2-4961
155 Lyman Street
Asheville, North Carolina

DON'S RESTAURANT

The Home of Something
Different for Dinner

Highway 70
Black Mountain, North Carolina

CLIMAX BARBER SHOP

Strive To Please Our Customers
Best Flat-top in Town
Phone NO 9-7933
Black Mountain, North Carolina

H & W 5 & 10 STORE

General Variety Store
Line of Merchandise
Phone NO 9-7617

State Street
Black Mountain, North Carolina

JOE PORCHER'S GARAGE

Your Automotive
Repair Center
Day Phone NO 9-6641
Night Phone NO 9-6643
Swannanoa, North Carolina

THE NORTHWESTERN BANK

Our Congratulations to the Class of '59



MEMBER OF FDIC

Phone NO 9-8467
Black Mountain-Old Fort, North Carolina



GUESS WHO?



Compliments of

ACME BARBER SHOP

"It pays to look well."

Phone NO 9-5411
117 Broadway
Black Mountain, North Carolina

ACME BEAUTY SALON

For Beauty Service,
Acme Beauty Salon
Phone NO 9-7739
Black Mountain, North Carolina



Four-Barrel Carburetor??

FOLSOM'S SUPERETTE

Groceries, Fresh Meats, Frozen
Foods & Free Delivery
Phone NO 9-3674
Swannanoa, North Carolina



GROVE STONE AND SAND

Phone: NO 9-8465 - NO 9-8454
Swannanoa, North Carolina

Compliments of

WASH-N-SHOP

Phone NO 9-8143
Swannanoa, North Carolina

PENCE NOVELTY STORE

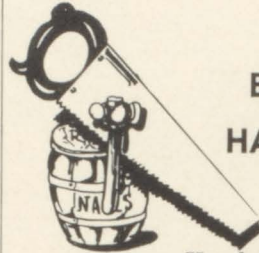
Shoes for the Family
Nationally Advertised in Vogue
Storybook (for children)

Endicott-Johnson

Black Mountain, North Carolina

**BLACK MOUNTAIN HOSIERY
MILLS INCORPORATION**

Phone NO 9-8112
Black Mountain, North Carolina



**BLACK MOUNTAIN
HARDWARE CO., INC.**

Headquarters for
Hardware and Houseware
Black Mountain, North Carolina

KNIGHT'S PHARMACY

Walgreen Agency
Prescription Specialist

Phone NO 9-3331
Black Mountain, North Carolina

**GARLAND AND LONG TIRE
COMPANY**

Distributors for U. S. Royal Tires
Recapping All Sizes
Wheel Balancing
Phone NO 9-6231
Swannanoa, North Carolina

FRANK HUGGINS, JEWELER



Gifts for all Occasions
Watch, Clock, & Jewelry Repair
Phone NO 9-5741
Swannanoa, North Carolina

GRANDVIEW COURT

Air Condition-TV Lounge
On Route 70
Mr. & Mrs. C. E. Johnson, Mgrs.
Childrens Playground
Reasonable Rates
Phone NO 9-8264
Black Mountain, North Carolina

A MESSAGE FROM THE ENKA FOUNDATION

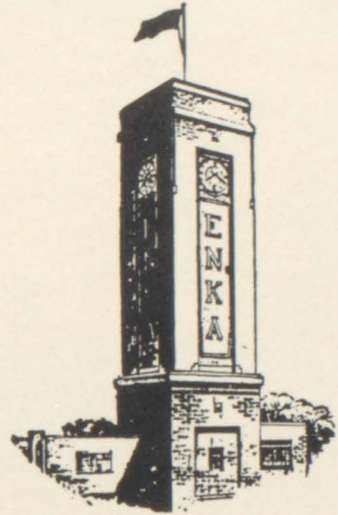
It is a firm belief at American Enka that education is a most important element in molding good citizenship. The amount of training and preparation one receives determines to a considerable degree his usefulness to his community, his country, and himself.

This year's high school graduates are to be congratulated — and urged to continue their educations in every way possible.



Symbol Of Quality
And Service In
Man-Made Fibers

Enka, North Carolina



Compliments of

**HARRISON
FURNITURE STORE**



TO VISIT

Phone: NO 9-8565
Swannanoa, North Carolina



"Man With The Horn"

GOFF RADIO & TV SERVICE

SERVICE!

IS OUR
FIRST
THOUGHT



Phone NO 9-4301
100 Broadway

Black Mountain, North Carolina

**POTTER FEED AND
FERTILIZER COMPANY**

Feed, Fertilizer, and
Hardware

Phone NO 9-4221

Black Mountain, North Carolina

BEA'S BEAUTY SHOPPE

"We Strive To Please"

Rock Building Near City Hall

Phone NO 9-7116

Black Mountain, North Carolina

CONGRATULATIONS
To the Graduating Class of '59
Best Wishes for Every Success.

BLACK MOUNTAIN DRUG CO.

Uzzell's Rexall

Phone NO 9-4121

State and Broadway

Black Mountain, North Carolina

BLACK MOUNTAIN PURE OIL



T. B. A. Sales - Minor Repairs
Phone NO 9-4601

Black Mountain, North Carolina



B & J SUNDRIES

Phone NO 9-9208

Swannanoa, North Carolina

VALLEY REALTY COMPANY

Phone NO 9-7111

Corner of Church Street & Highway 70
Black Mountain, North Carolina

HARRY M. NOBLITT

Fruits, Vegetables and Fresh Meat
Staple and Fancy Groceries

Phone NO 9-7779

Swannanoa, North Carolina





Compliments of

KEARFOTT COMPANY, INC.

Phone: NO 9-8474

Highway 70, Black Mountain

Black Mountain, North Carolina

BUCKNER CLEANERS

Service Always
Phone NO 9-3747
Swannanoa, North Carolina

TYSON'S FURNITURE CO.

Phone NO 9-4381
109 Broadway
Black Mountain, North Carolina

DAVIDSON COAL CO.

Coal - - Fuel Oil
Kerosene - - Fuel Oil
Phone NO 9-7711
Swannanoa, North Carolina

ANNS BEAUTY SHOPPE

In Business in Buncombe County
Forty years - - All types of Beauty
Culture
Phone NO 9-7333
Swannanoa, North Carolina



**CECIL REDMONS
ESSO SERVICE**

Phone NO 9-9441

Swannanoa, North Carolina

Compliments of

COBLE DAIRY PRODUCTS



Phone AL 2-5656
110 Tunnel Road
Asheville, North Carolina

Compliments of

COLLINS DEPARTMENT STORE

"Never Knowingly
Undersold"

Phone NO 9-7395
119 Broadway
Black Mountain, North Carolina

ELECTRIC APPLIANCE REPAIR SERVICE

All Types of Home Appliances,
Portable - Electric and
Acetylene Welding

Phone NO 9-8304
109 Cherry Street
Black Mountain, North Carolina

Compliments of

MORGAN MANUFACTURING COMPANY, INC.

Black Mountain, North Carolina



Guess Who???

CAMPFIELD'S ESSO SERVICE

Serving the Best in ESSO Products
Phone NO 9-9246
Old Black Mountain Highway
Black Mountain, North Carolina

BLACK MOUNTAIN LUMBER COMPANY

Your lumber supply dealer since 1908
Where the greater number
buy their lumber

Phone: NO 9-3231
100 Sutton Ave.
Black Mountain, North Carolina

BUCHANAN'S 5 & 10c STORE

Phone NO 9-3673
Swannanoa, North Carolina

L. & N. BARBER SHOP

For Better Haircuts
Come In And Try One
Swannanoa, North Carolina

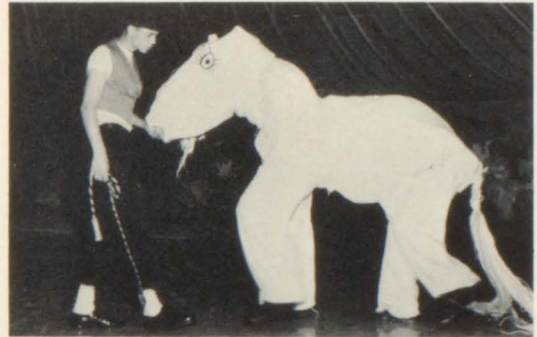
Compliments of

PELLOM'S TIME SHOP

Expert Watch Repair
Bulova Watches
Black Mountain, North Carolina



The illustrious Annual Staff!



"Jim, wag your tail!"



WARD'S DRUG STORE

Ward's Rexall Drugs
Complete Prescription Service

Phone NOrth 9-6841
Swannanoa, North Carolina



Compliments of

BUCKNER'S ESSO

Swannanoa, North Carolina

